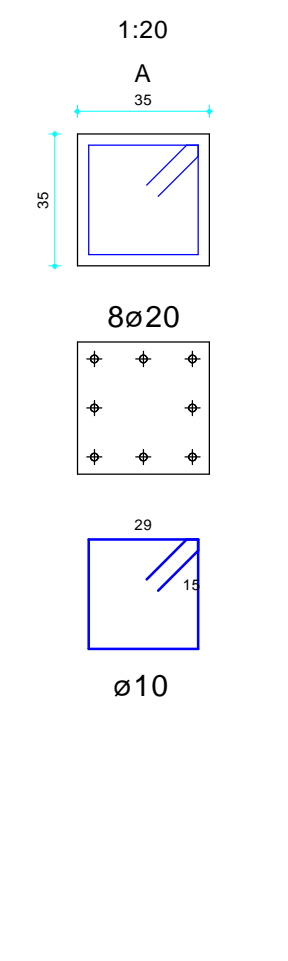
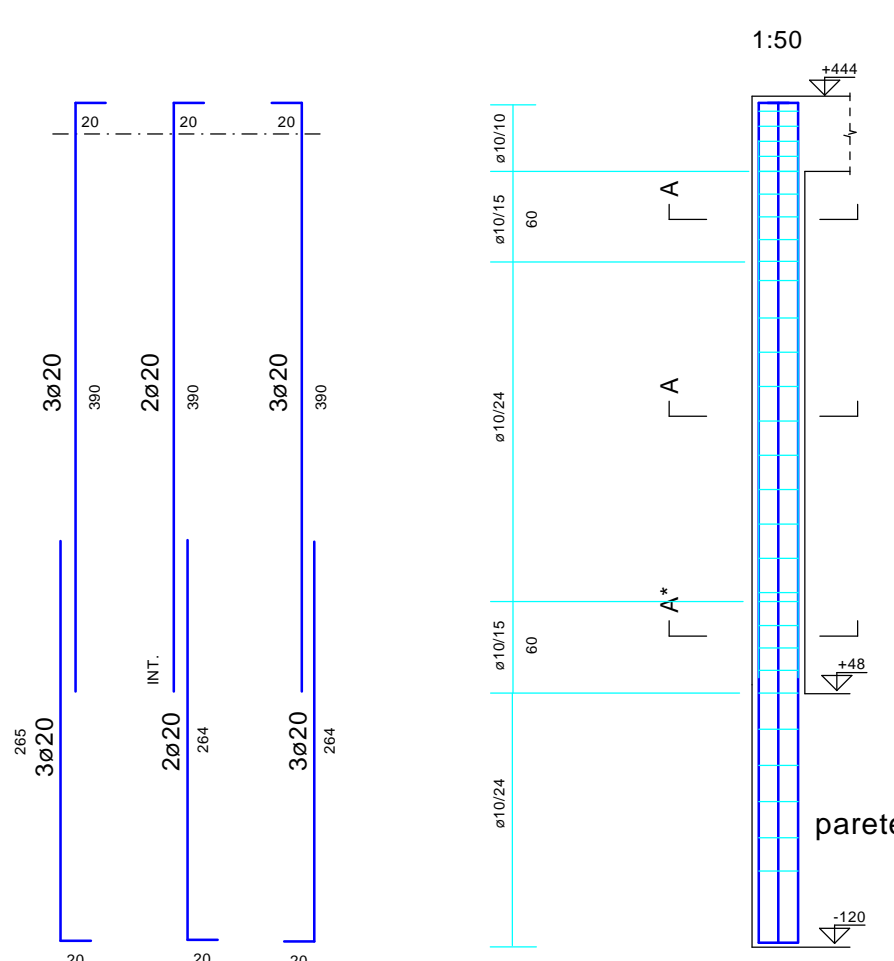
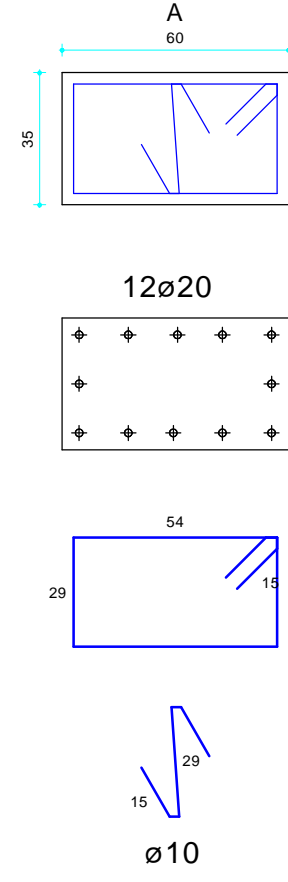
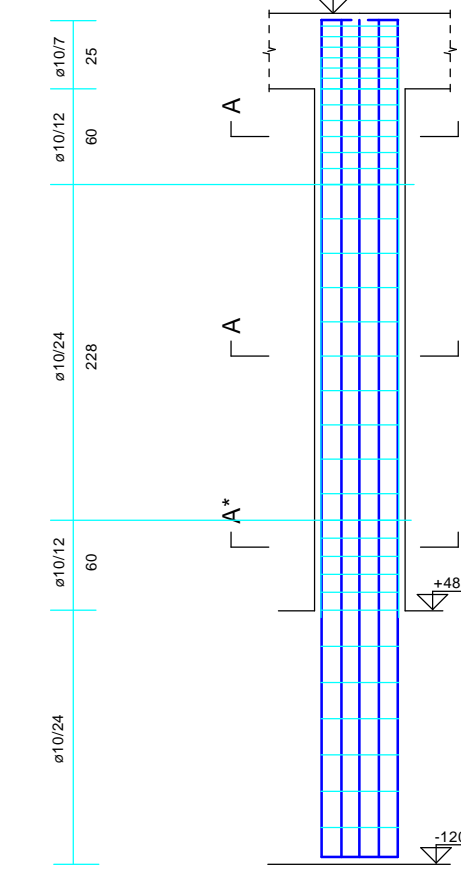
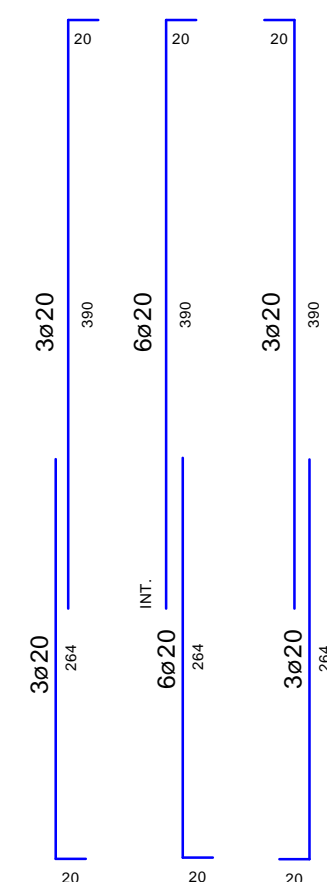


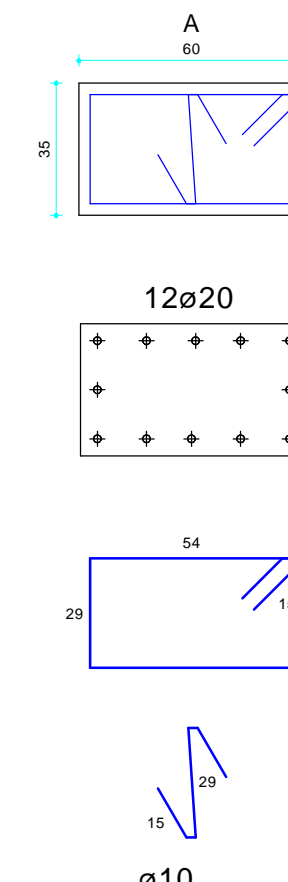
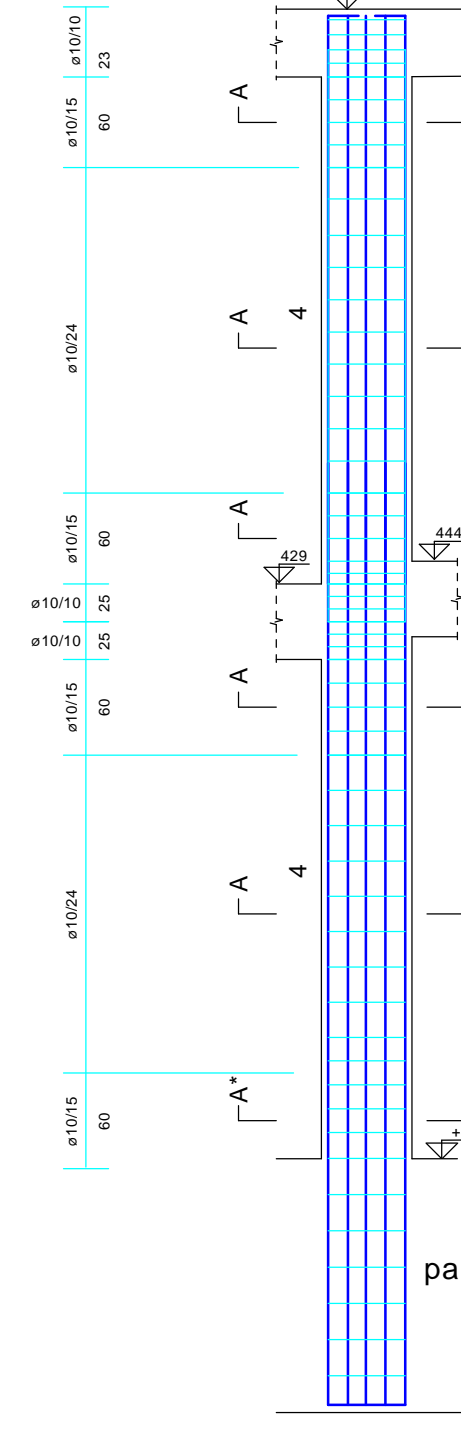
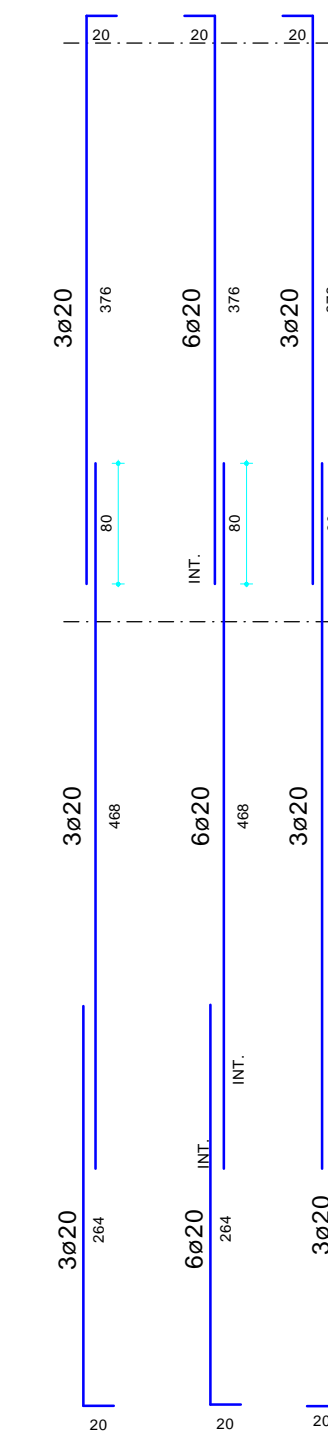
Pilastro 1, Pilastro 3, Pilastro 31, Pilastro 32  
Pilastro 38, Pilastro 39, Pilastro 41, Pilastro 42, Pilastro 43



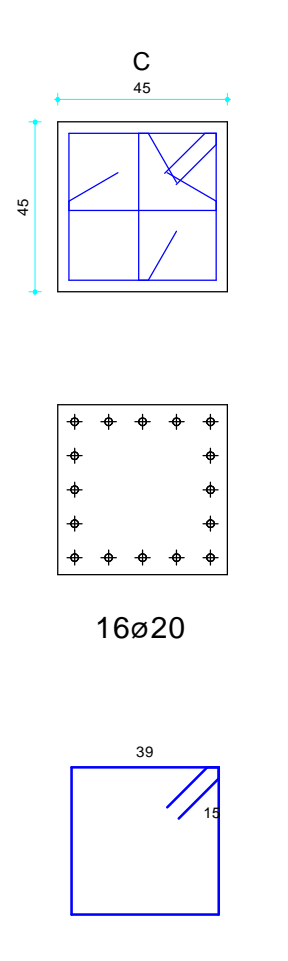
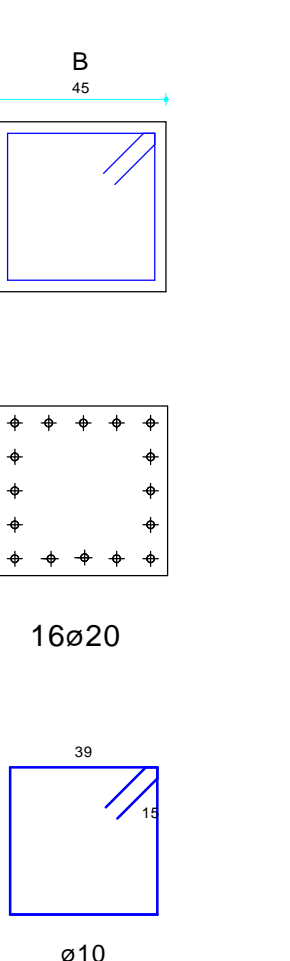
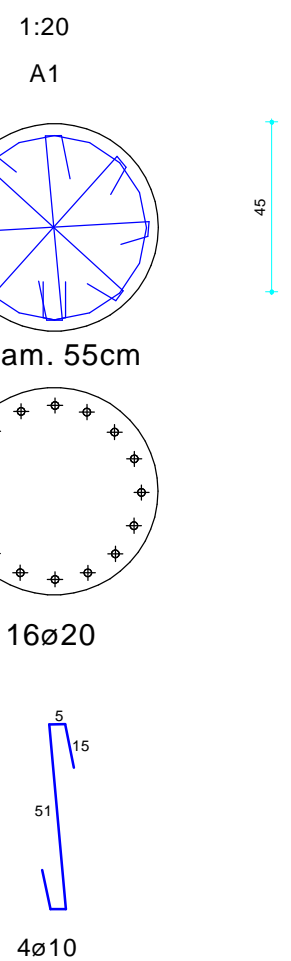
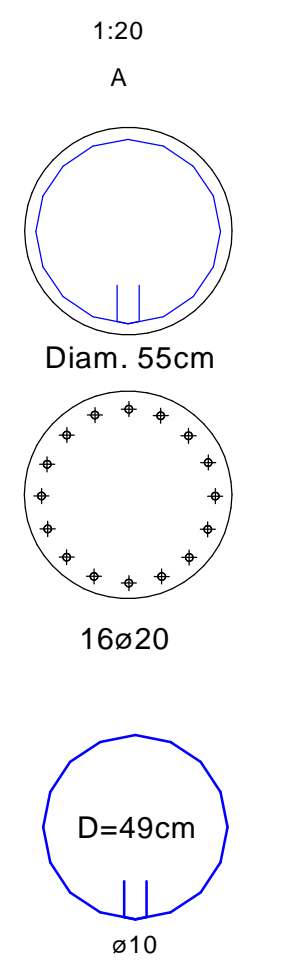
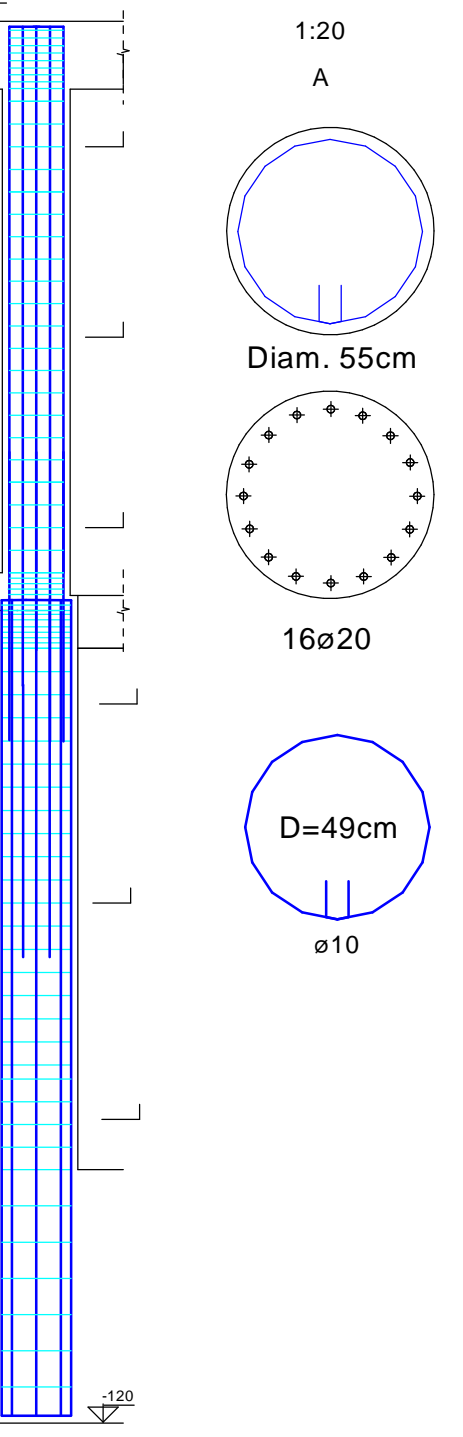
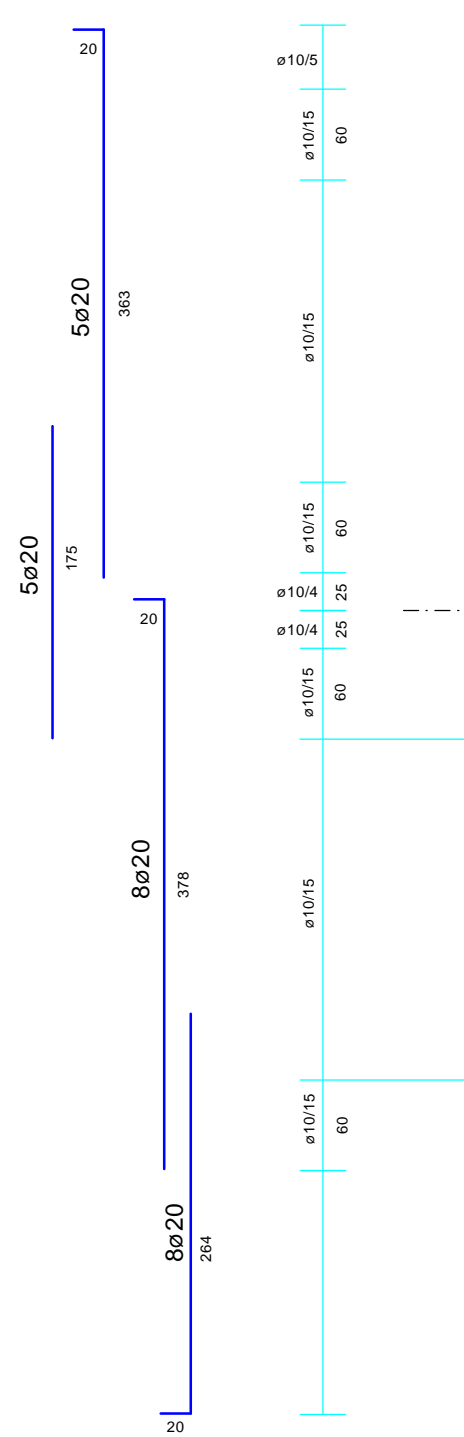
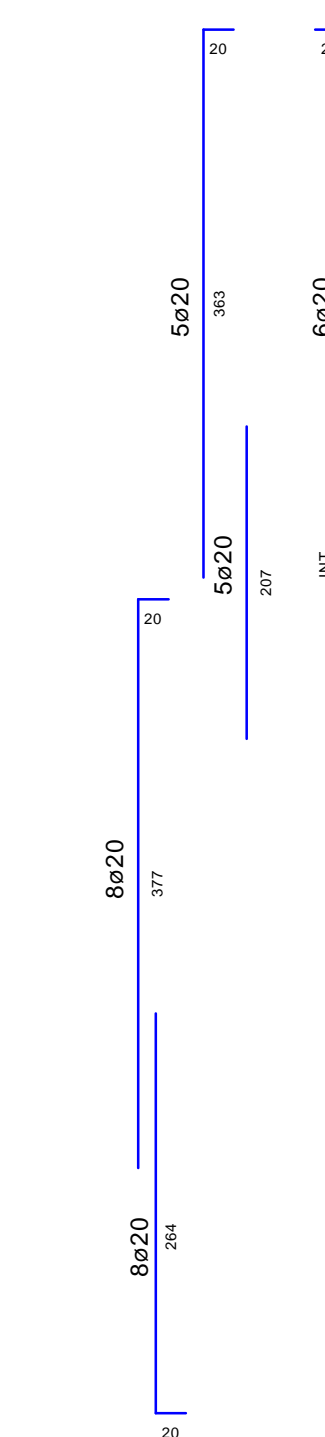
Pilastro 2  
1:50



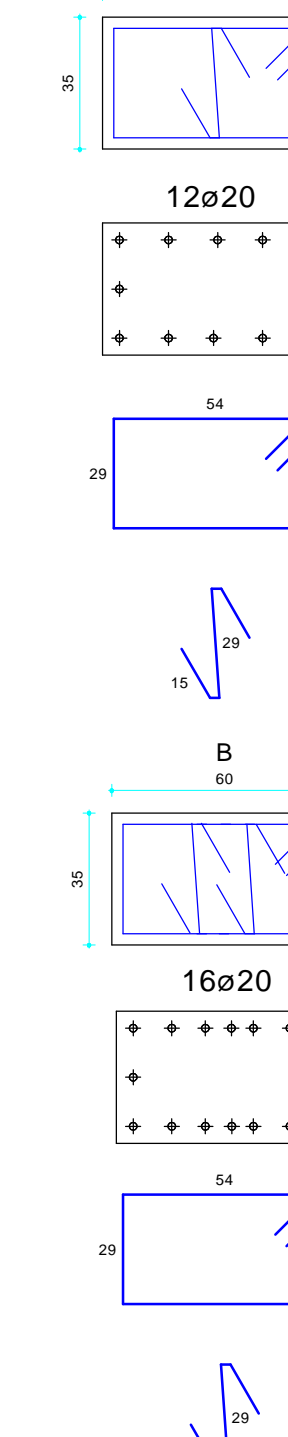
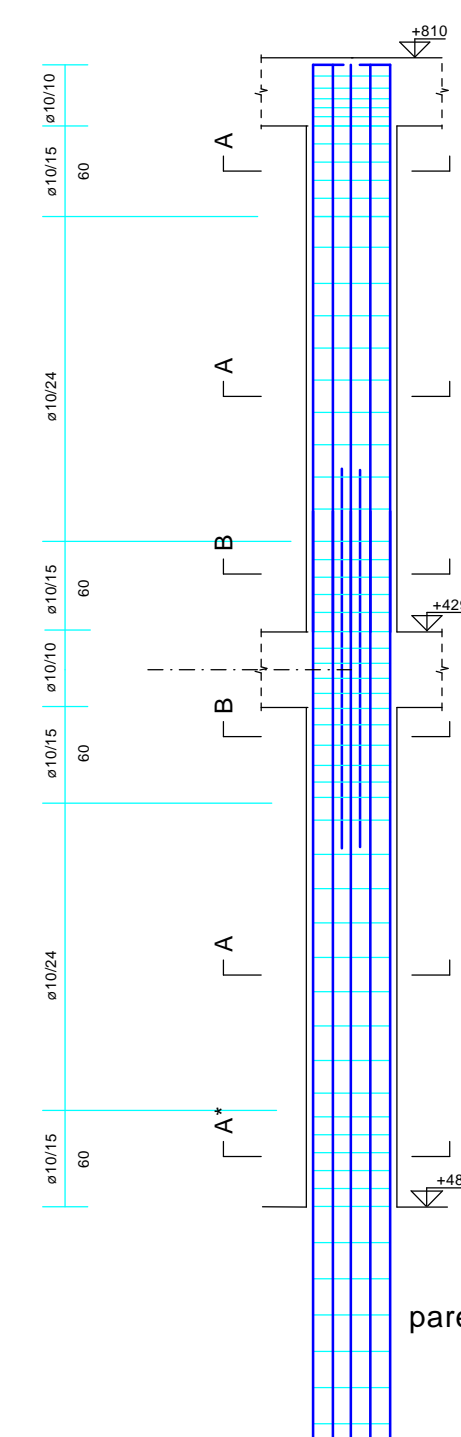
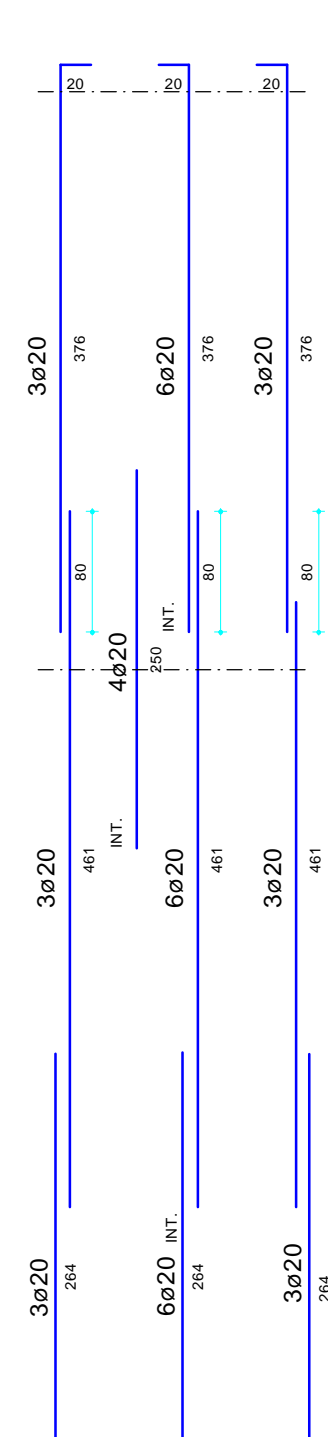
Pilastro 4, Pilastro 30  
1:50



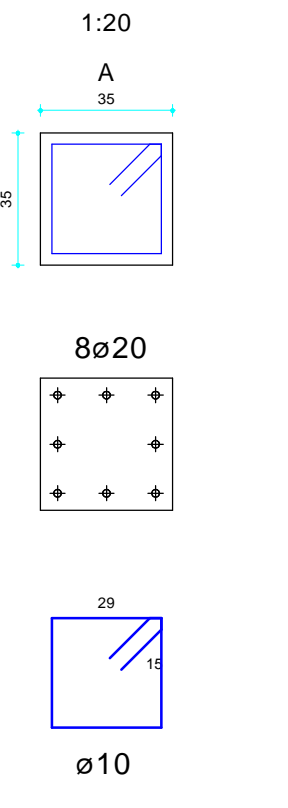
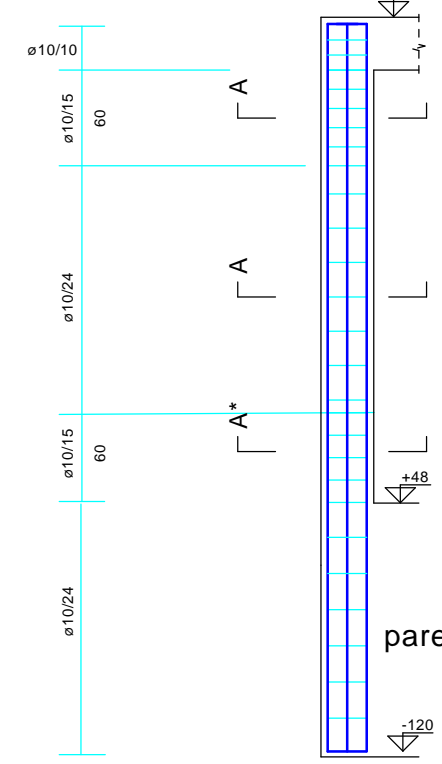
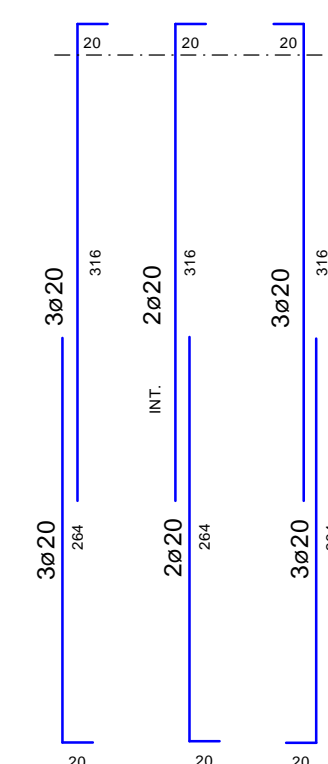
Pilastro 5, Pilastro 20  
1:50



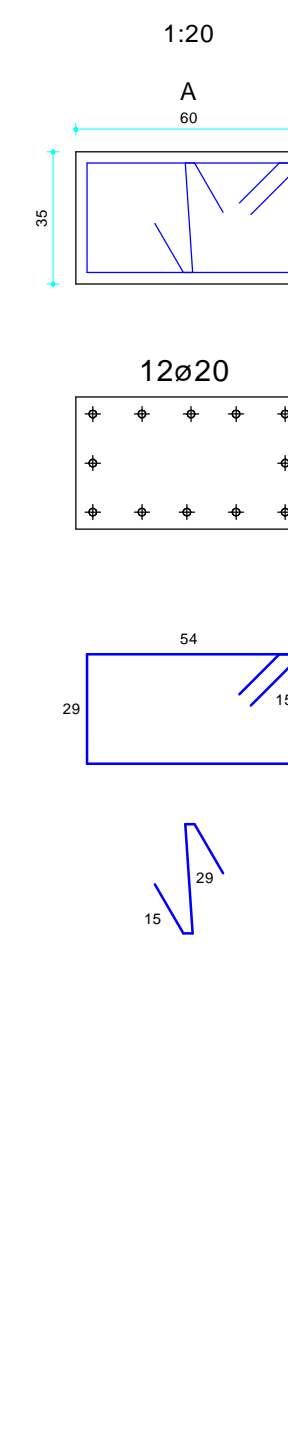
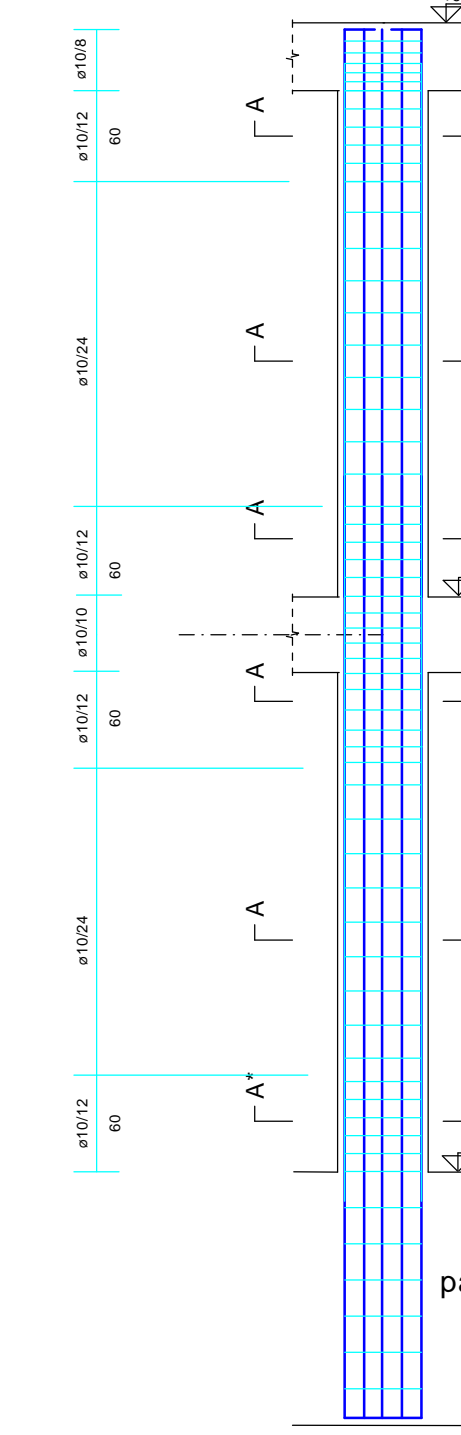
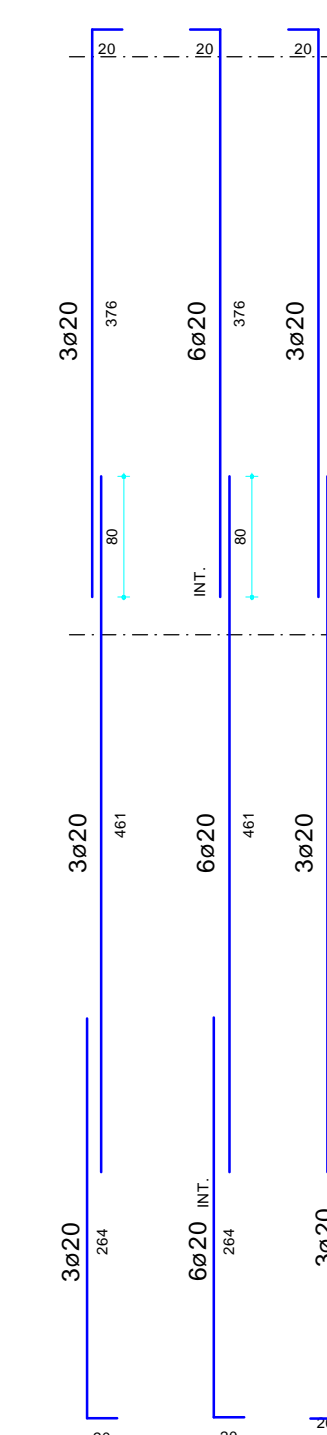
Pilastro 6  
1:50



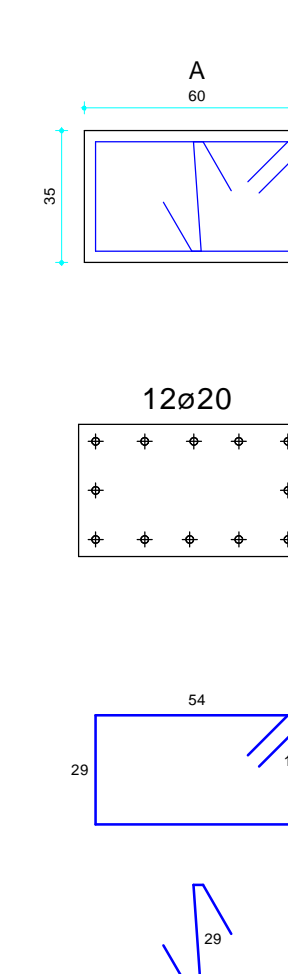
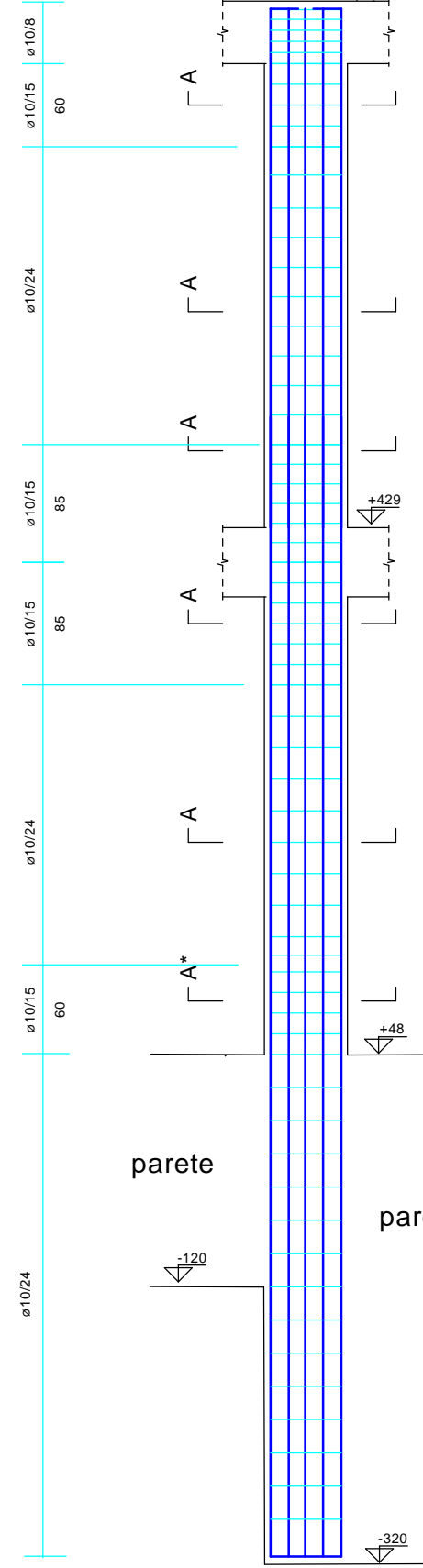
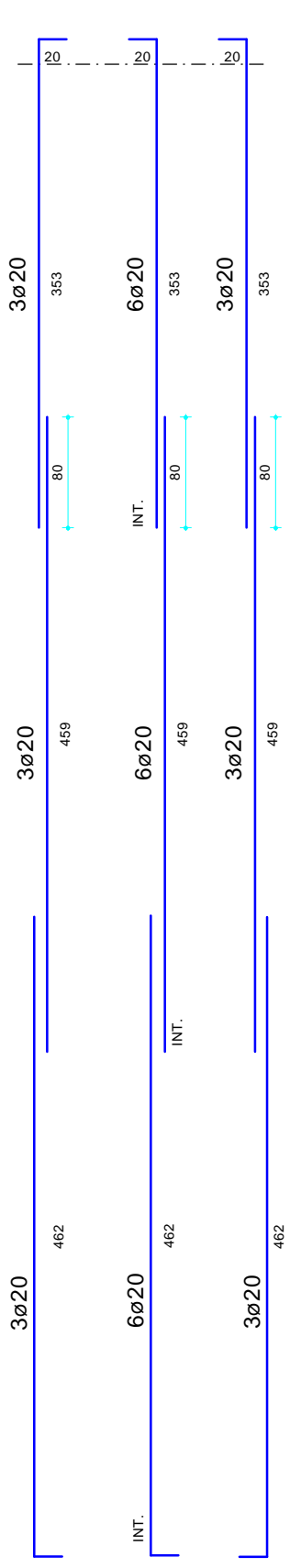
Pilastro 7  
1:50



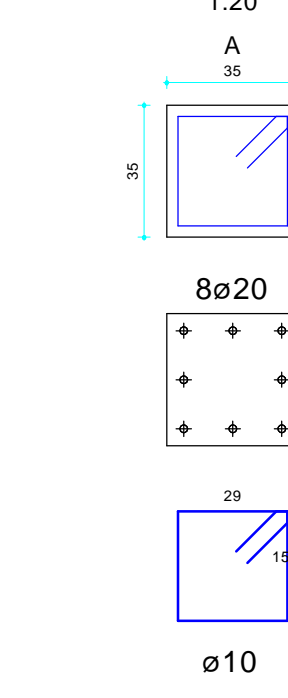
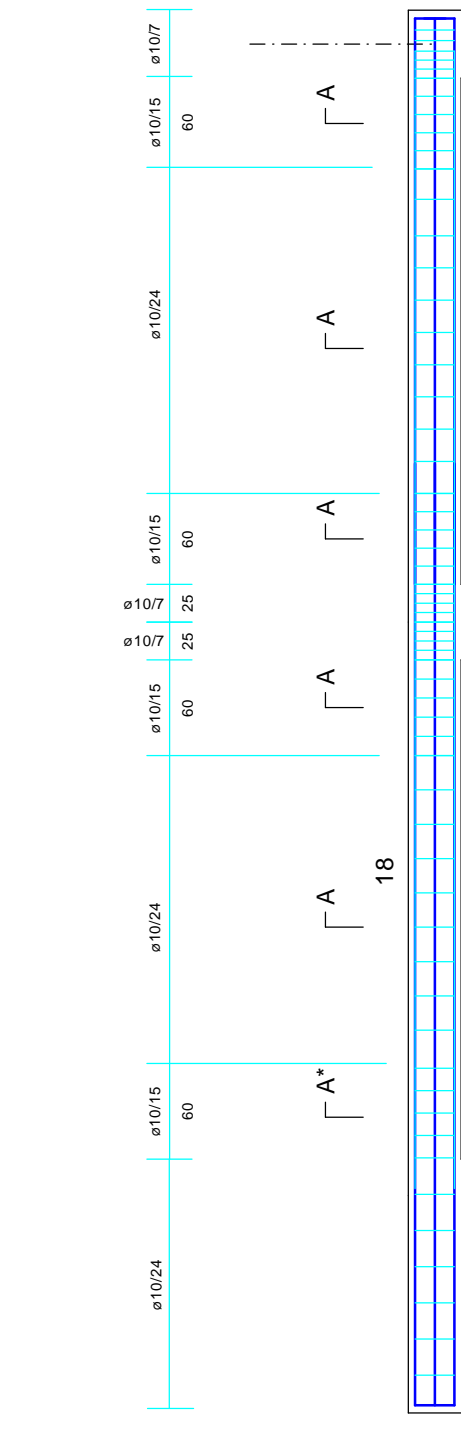
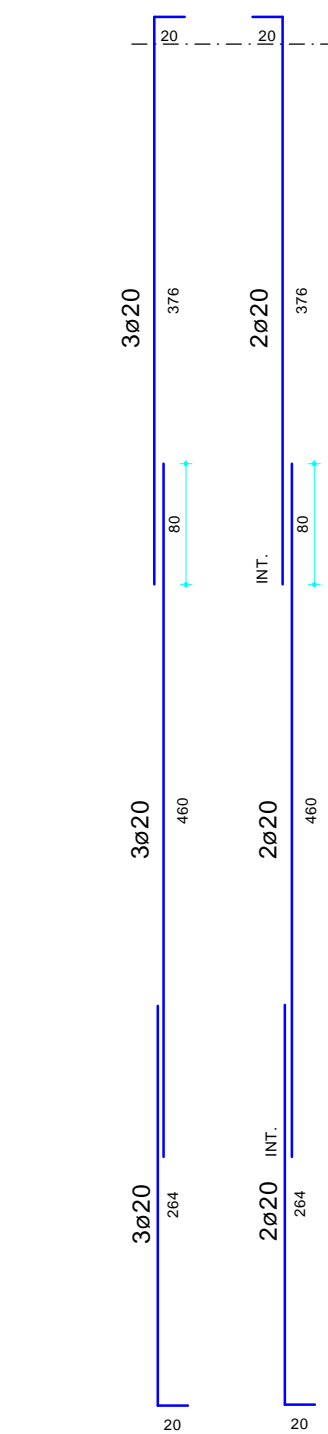
Pilastro 8, Pilastro 14, Pilastro 26  
1:50



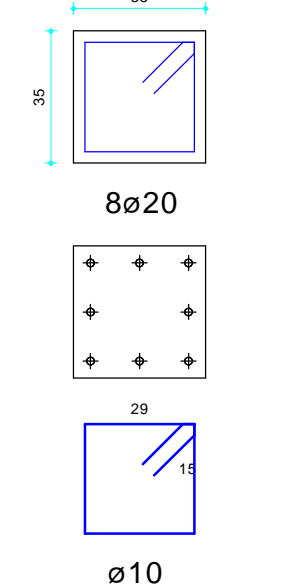
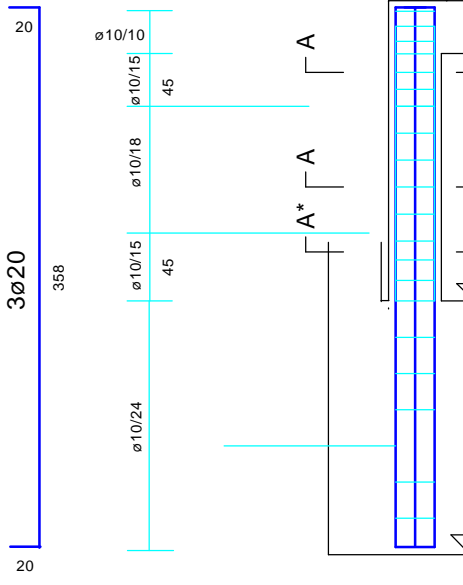
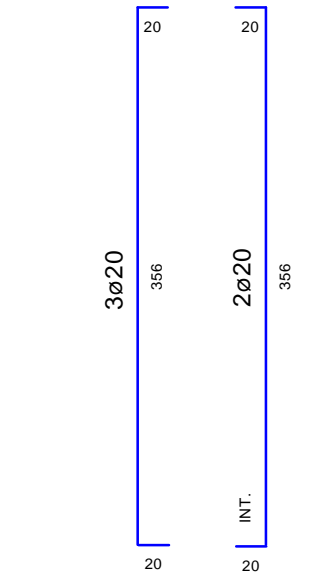
Pilastro 10  
1:50



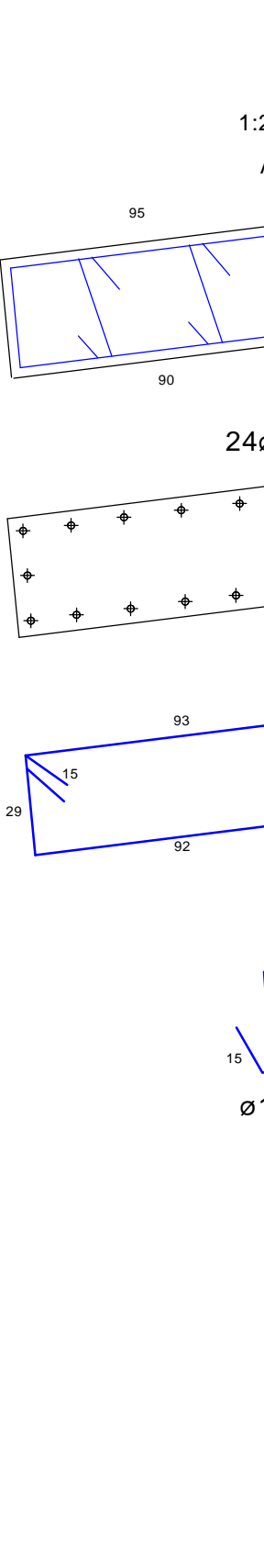
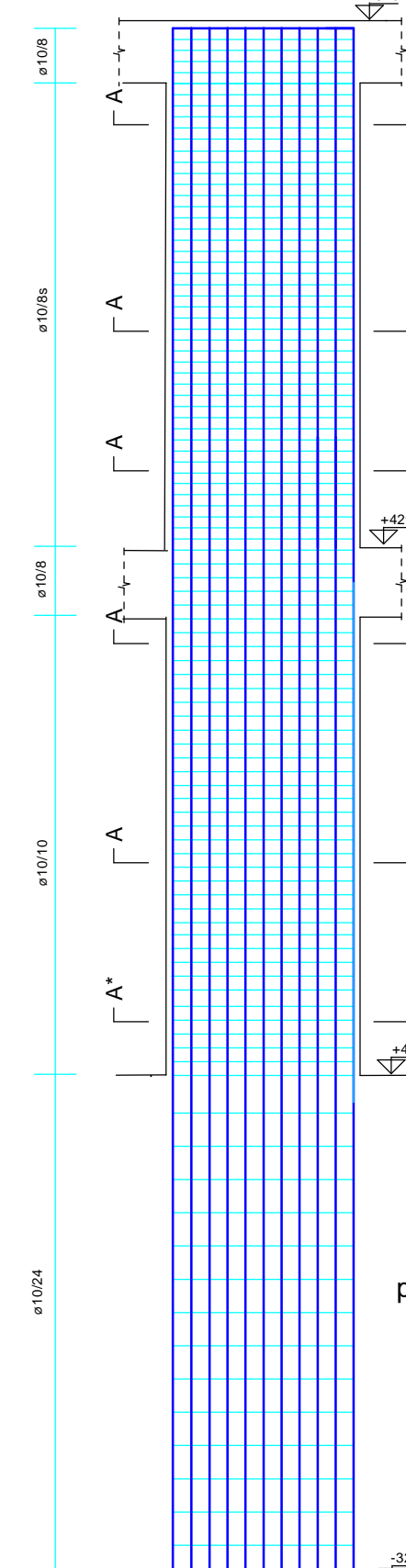
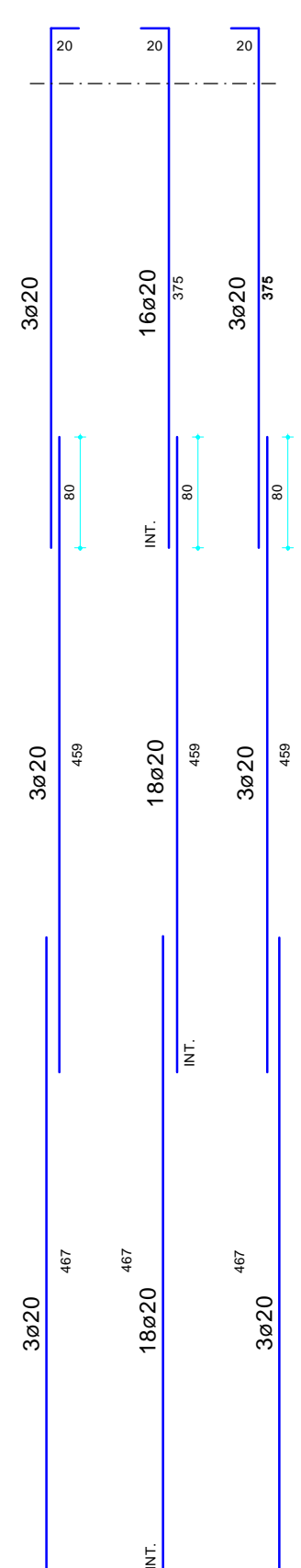
Pilastro 18, Pilastro 24 e Pilastro 25  
1:50



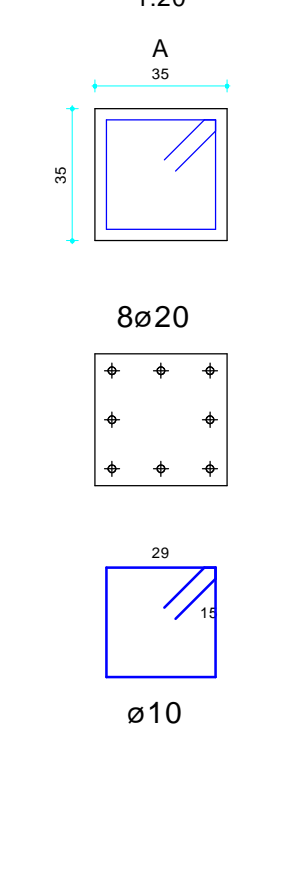
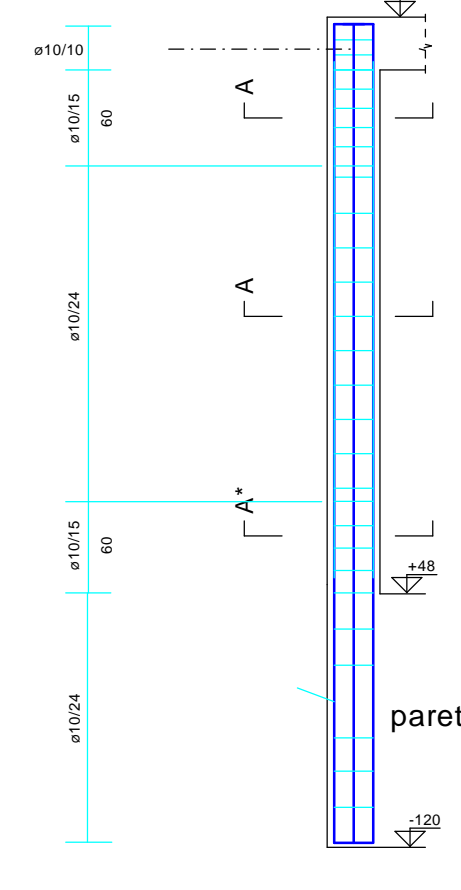
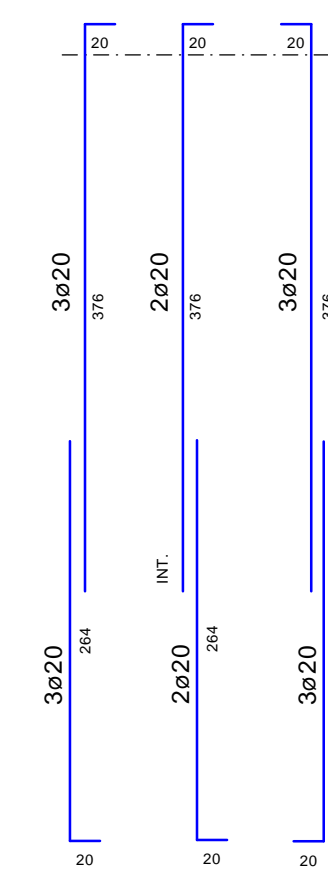
Pilastro 9 e Pilastro 16  
1:50



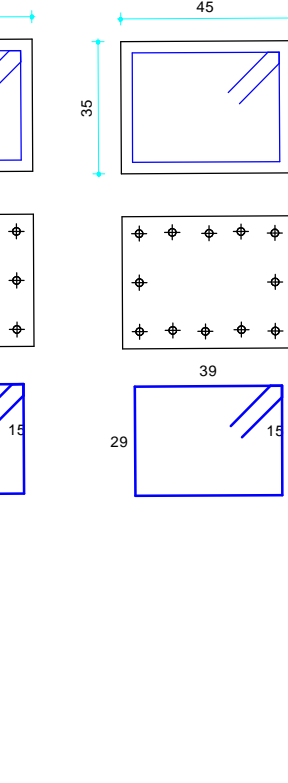
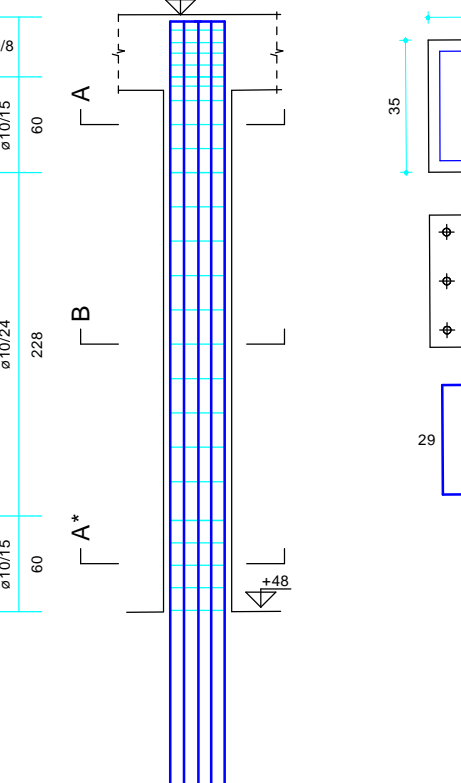
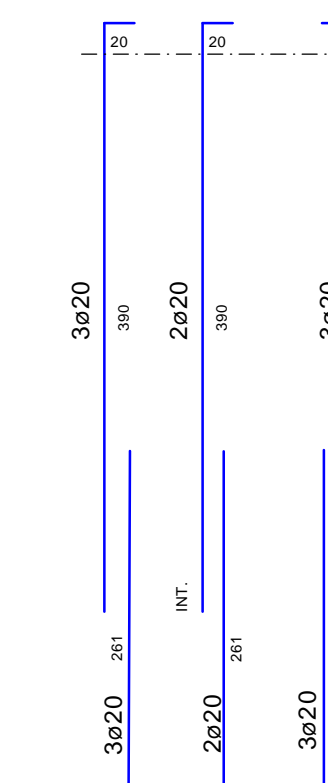
Pilastro 11  
1:50



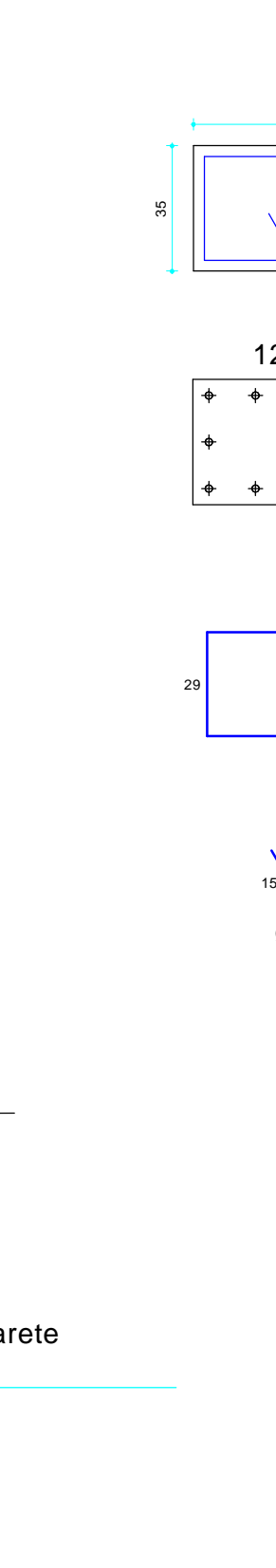
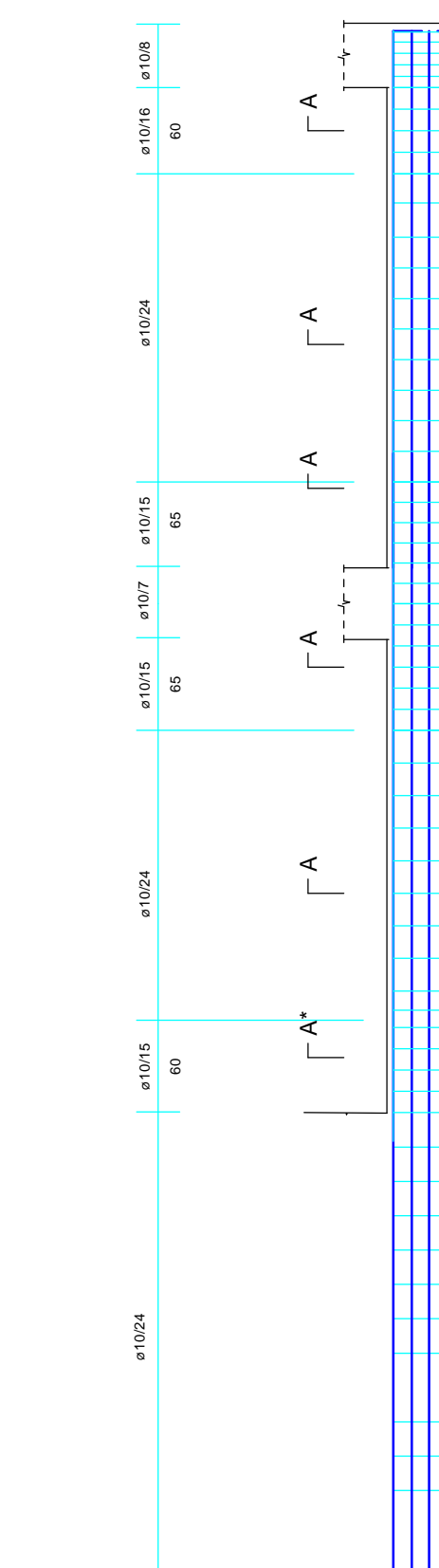
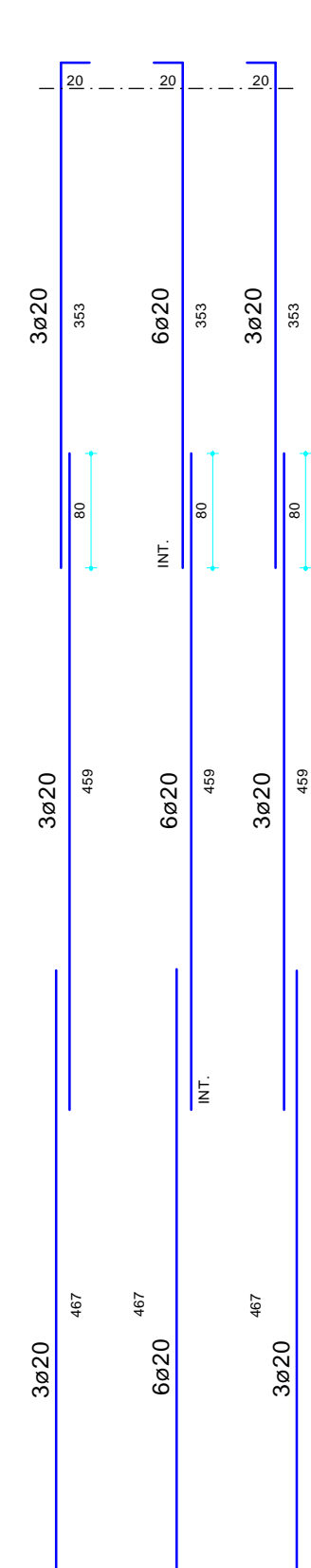
Pilastro 15  
1:50



Pilastro 40  
1:50



Pilastro 12, Pilastro 13, Pilastro 37  
1:50



comune di  
**PRATO**  
codice fiscale: 84006890481

Progetto: **Ampliamento Scuola Primaria di Cafaggio "Laura Poli"**

Titolo: **S09/1 - PILASTRI**

Fase: **PROGETTO ESECUTIVO**

Assessore ai Lavori Pubblici	VALERIO BARBERIS
Servizio di PI	LAVORI PUBBLICI
Dirigente del servizio	Arch. EMILIA QUATTRONE
Responsabile Unico del Procedimento	Arch. LUCA PIANTINI

Progettista Opere Architettoniche  
Arch. Diana Moscardi  
Tecnico collaboratore  
Geom. Dario Eleni  
Progettista Opere Strutturali  
Ing. Massimiliano Begliomini  
Progettista Impianti Elettrici e Speciali  
Ing. Maurizio Baldanzi  
Progettista Impianti Meccanici e Antincendio  
Ing. Filippo Bogani  
Coordinatore in fase di progettazione  
Arch. Luca Piantini

Elaborato: **DISEGNI STRUTTURALI**

Scala: **PILASTRI rapp. 1:50, sezioni rapp. 1:20**

Scopo: riservato agli uffici

AMBIENTE ORDINARIO  
CLASSE DI ESPOSIZIONE XC3  
CLASSE DI CONSISTENZA S4-S5  
CALCESTRUZZO: PILETA DI FONDAZIONE E PARETI - C25/S30  
PILASTRI - C32/S40  
TRAVI, SOLAI E SCALE - C28/S35  
ACCIAIO:  
in barre: B450C  
reti e s. B450A  
in profilati: S275