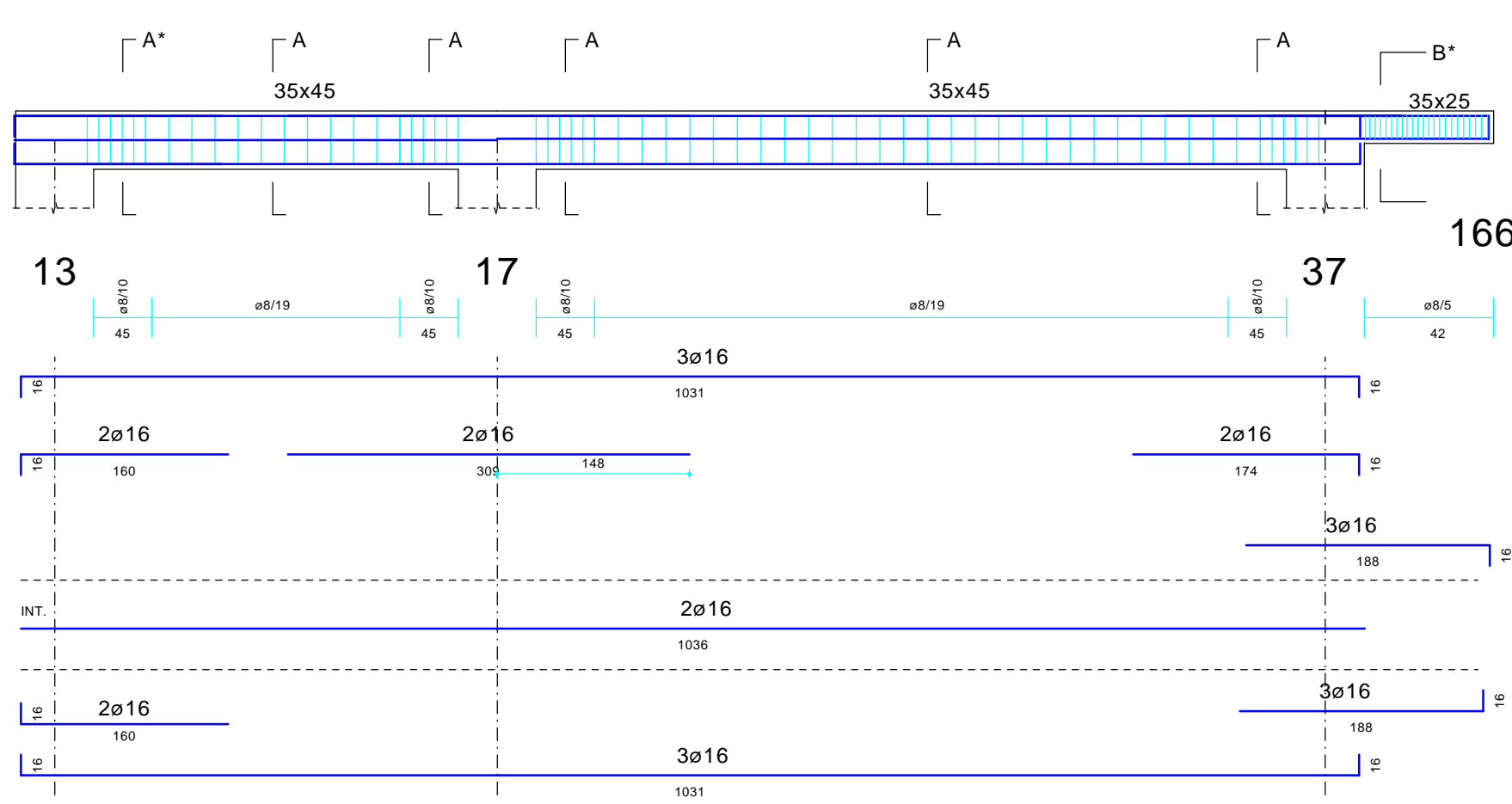


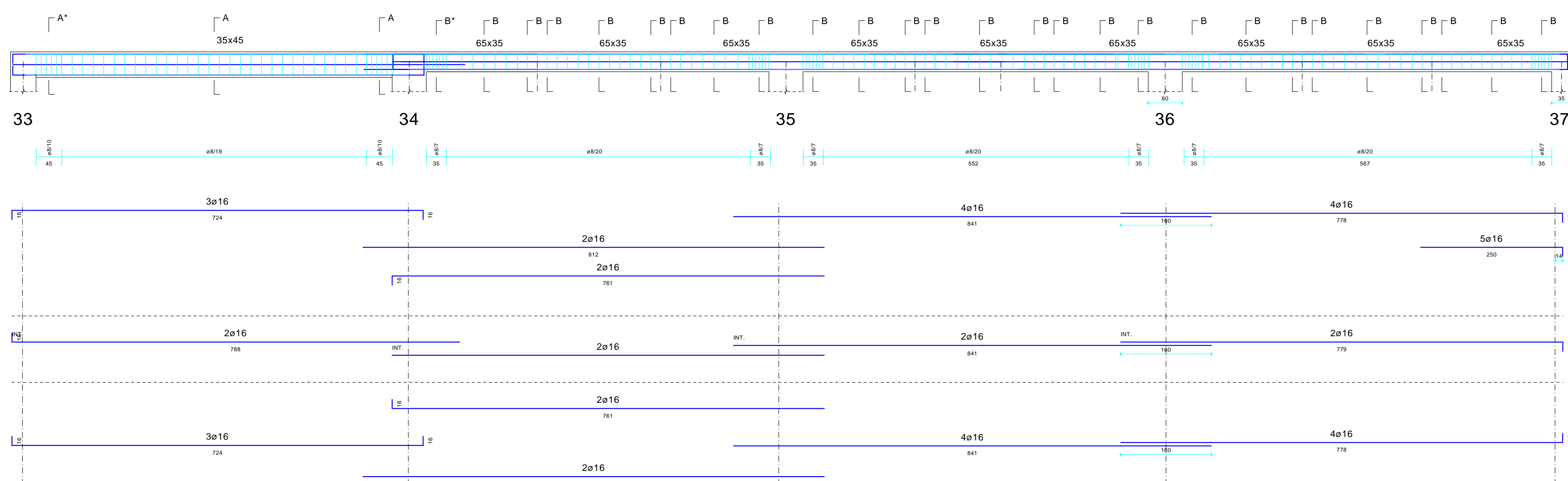
Trave 13-17-37-166

1:50



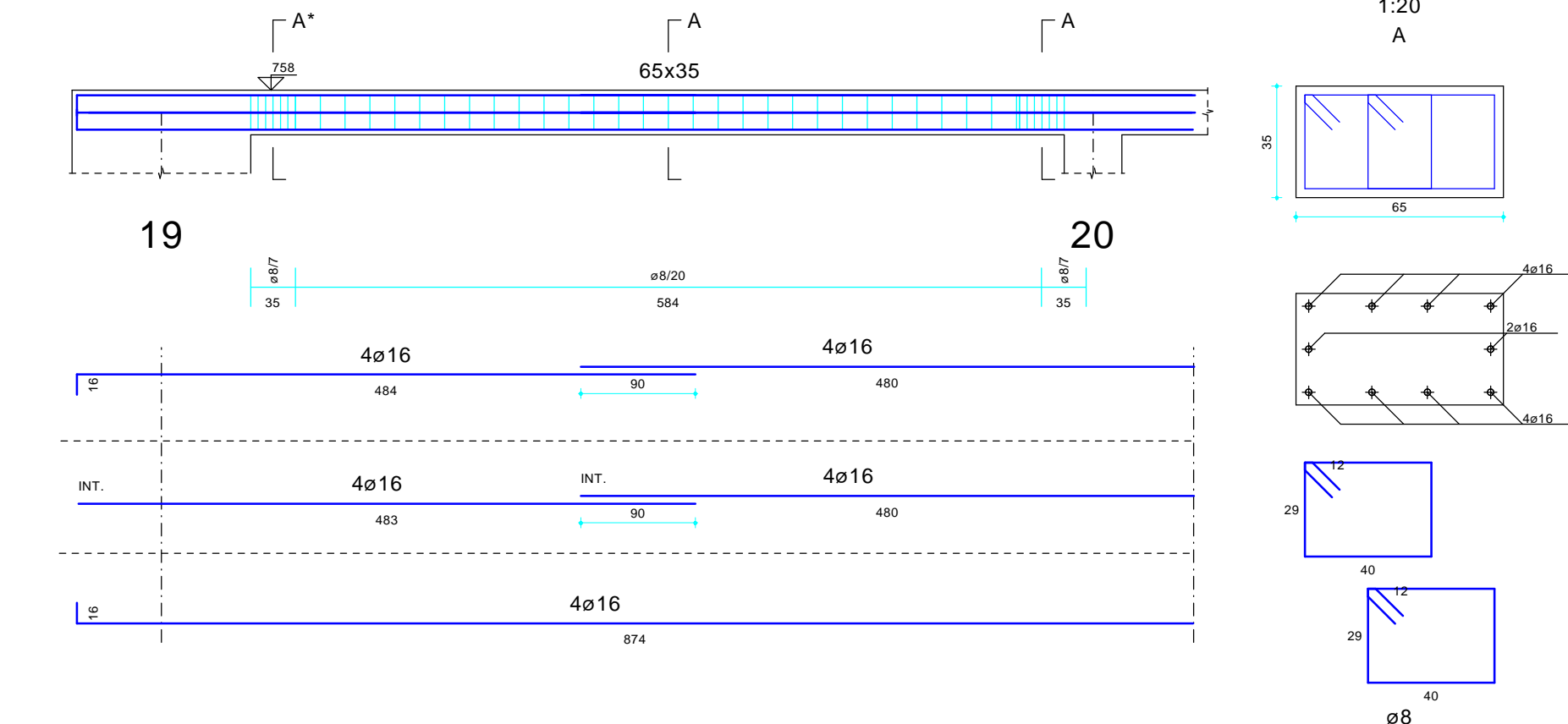
Trave 33-34-35-36-37

1:50



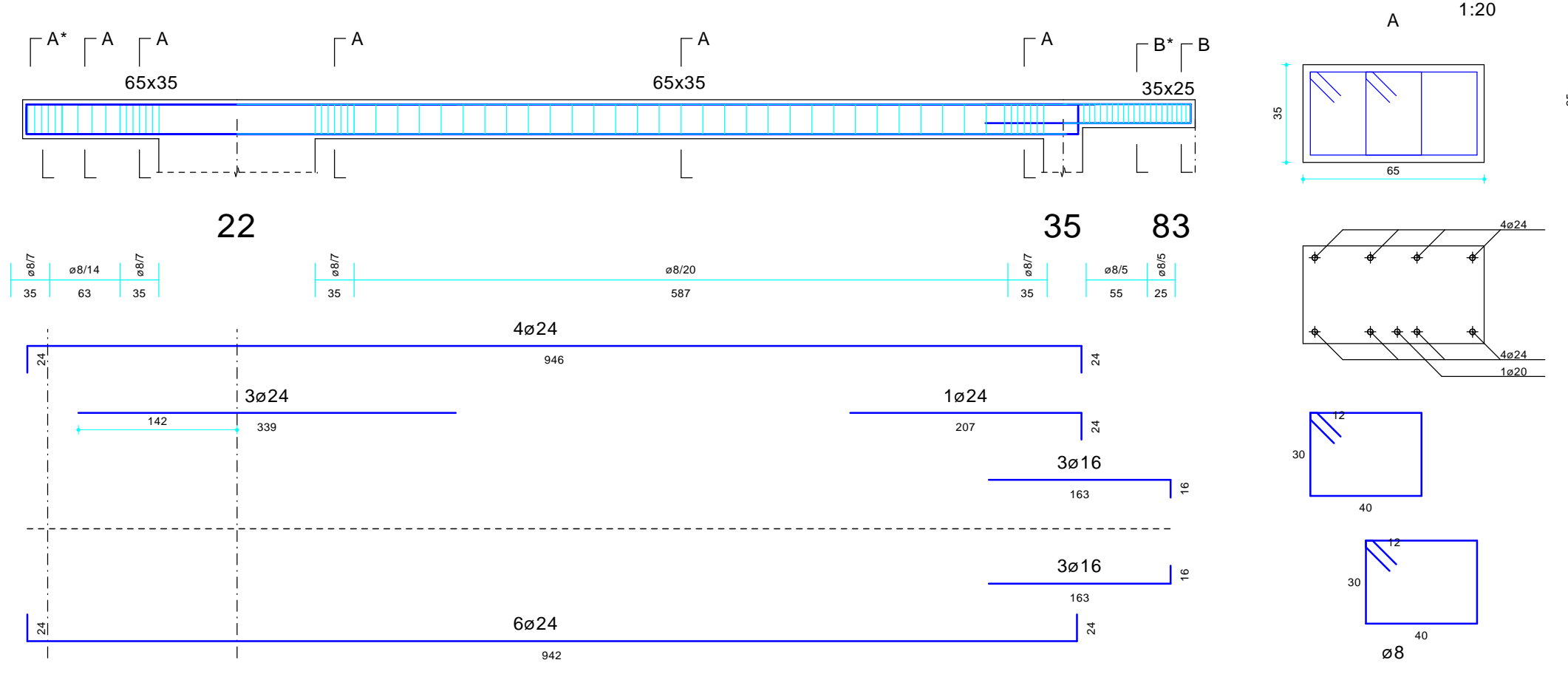
Trave 19-20

1:50



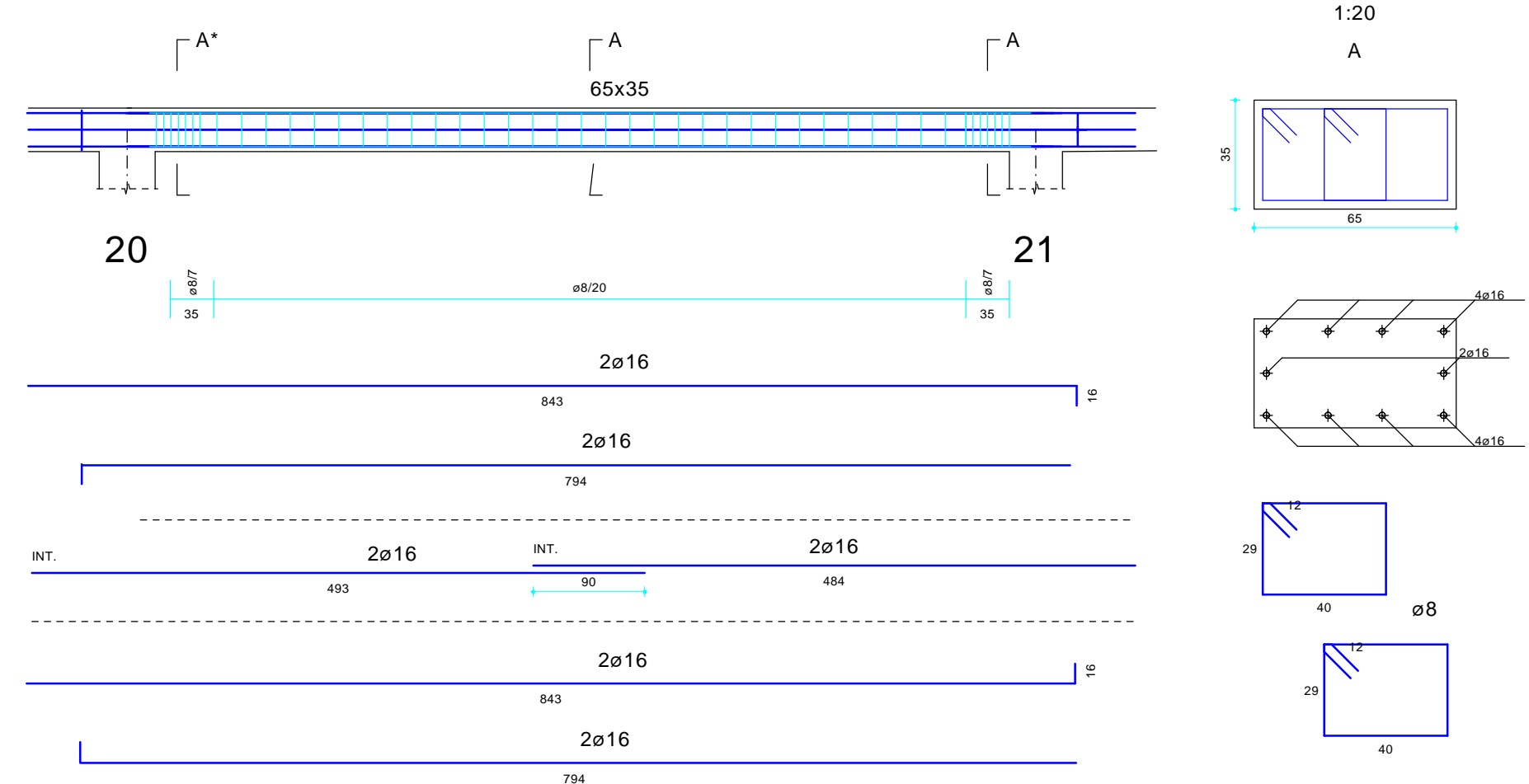
Trave 22-35-83

1:50



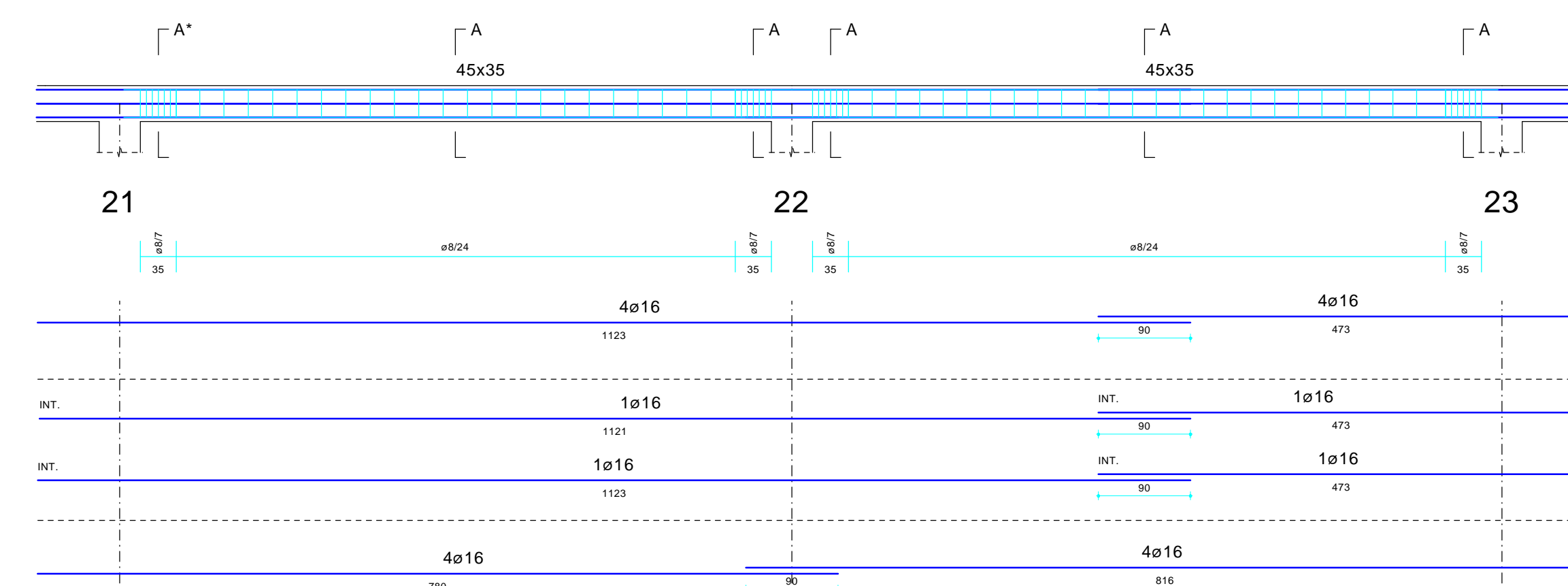
Trave 20-21

1:50



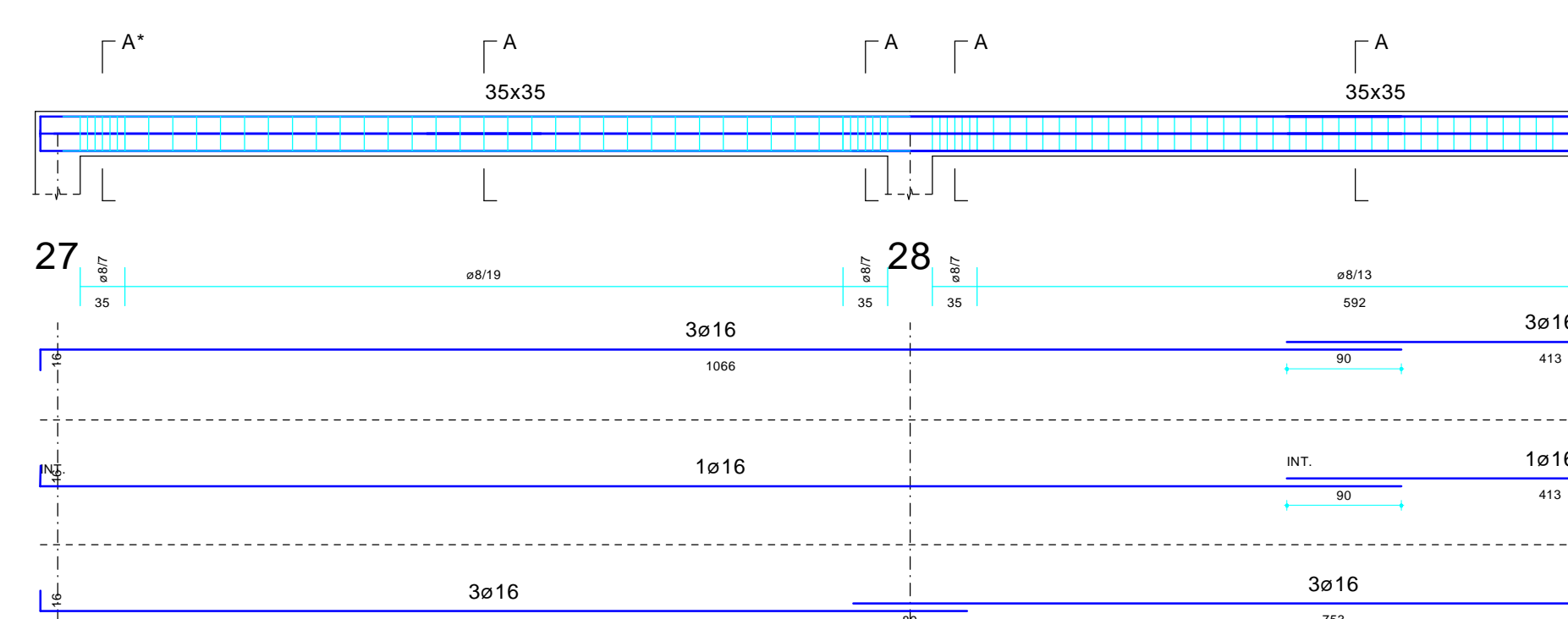
Trave 21-22-23

1:50



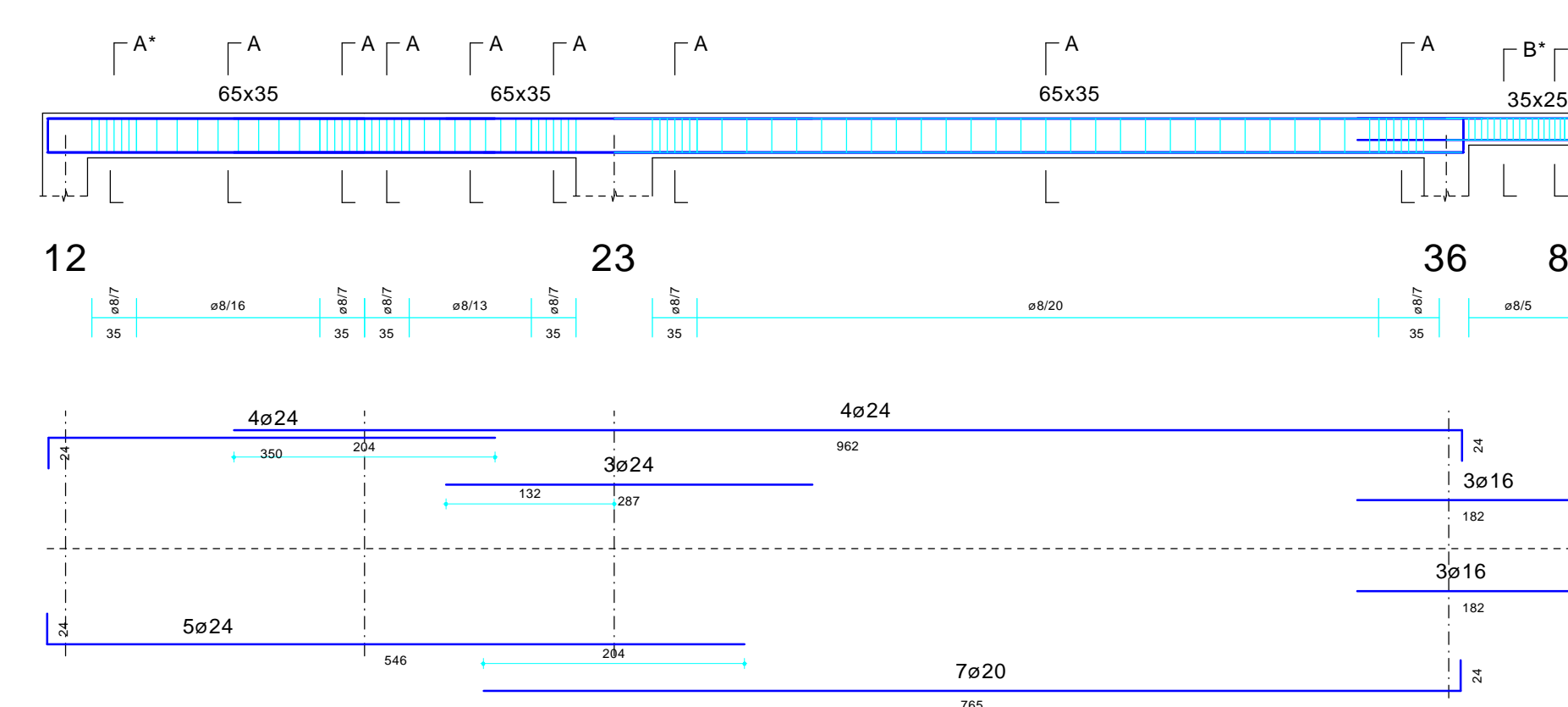
Trave 27-28-96

1:50



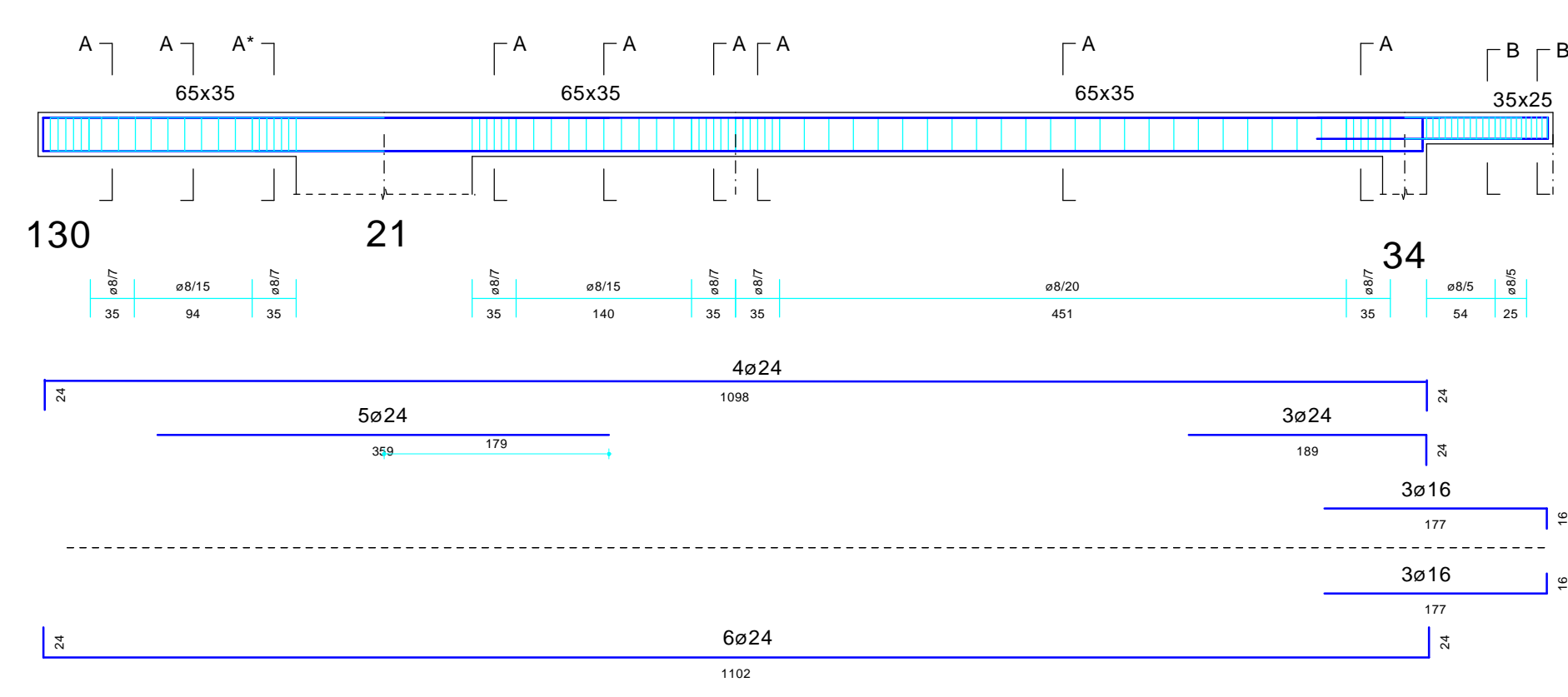
Trave 12-23-36-84

1:50



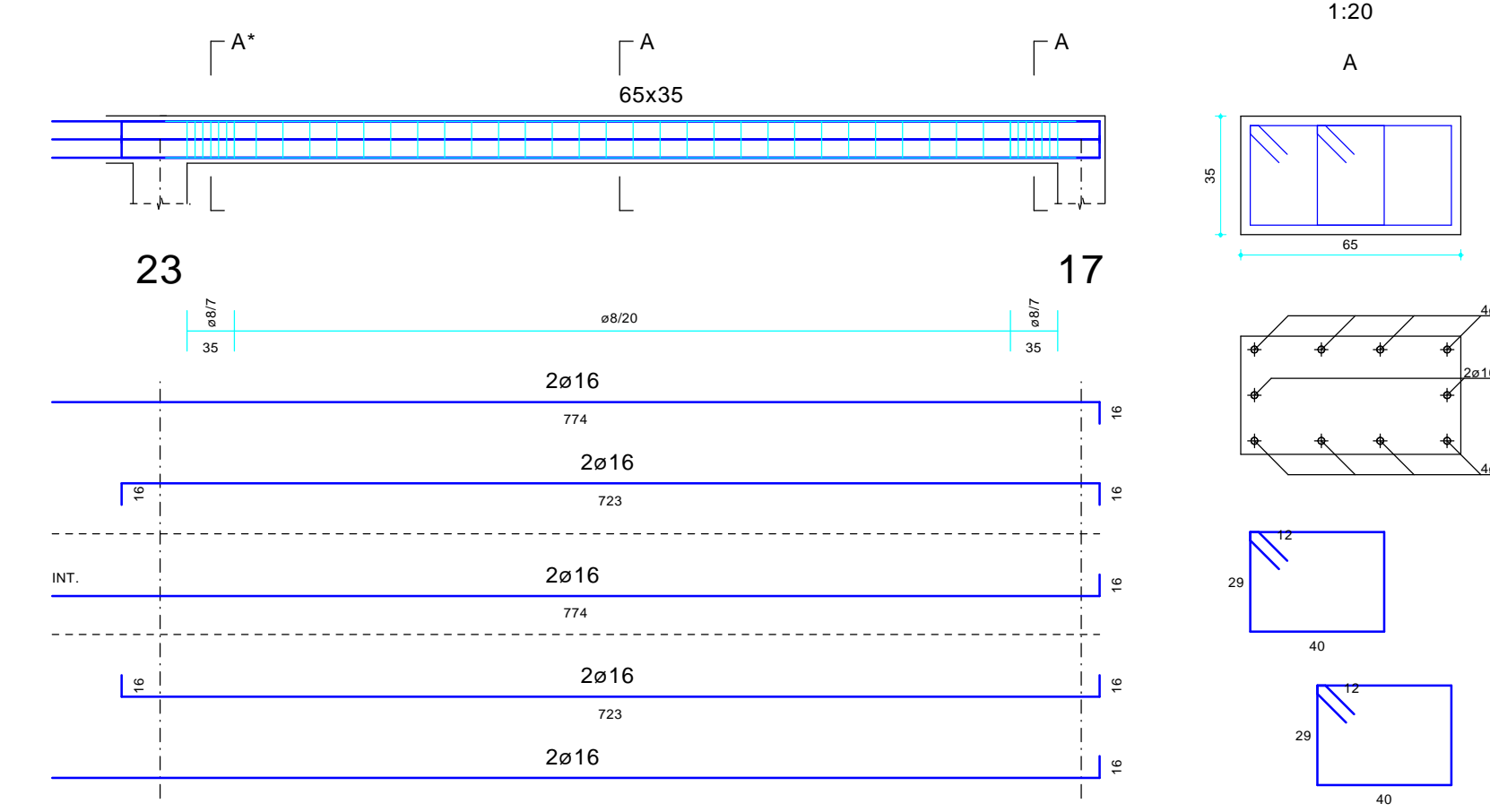
Trave 21-34

1:50



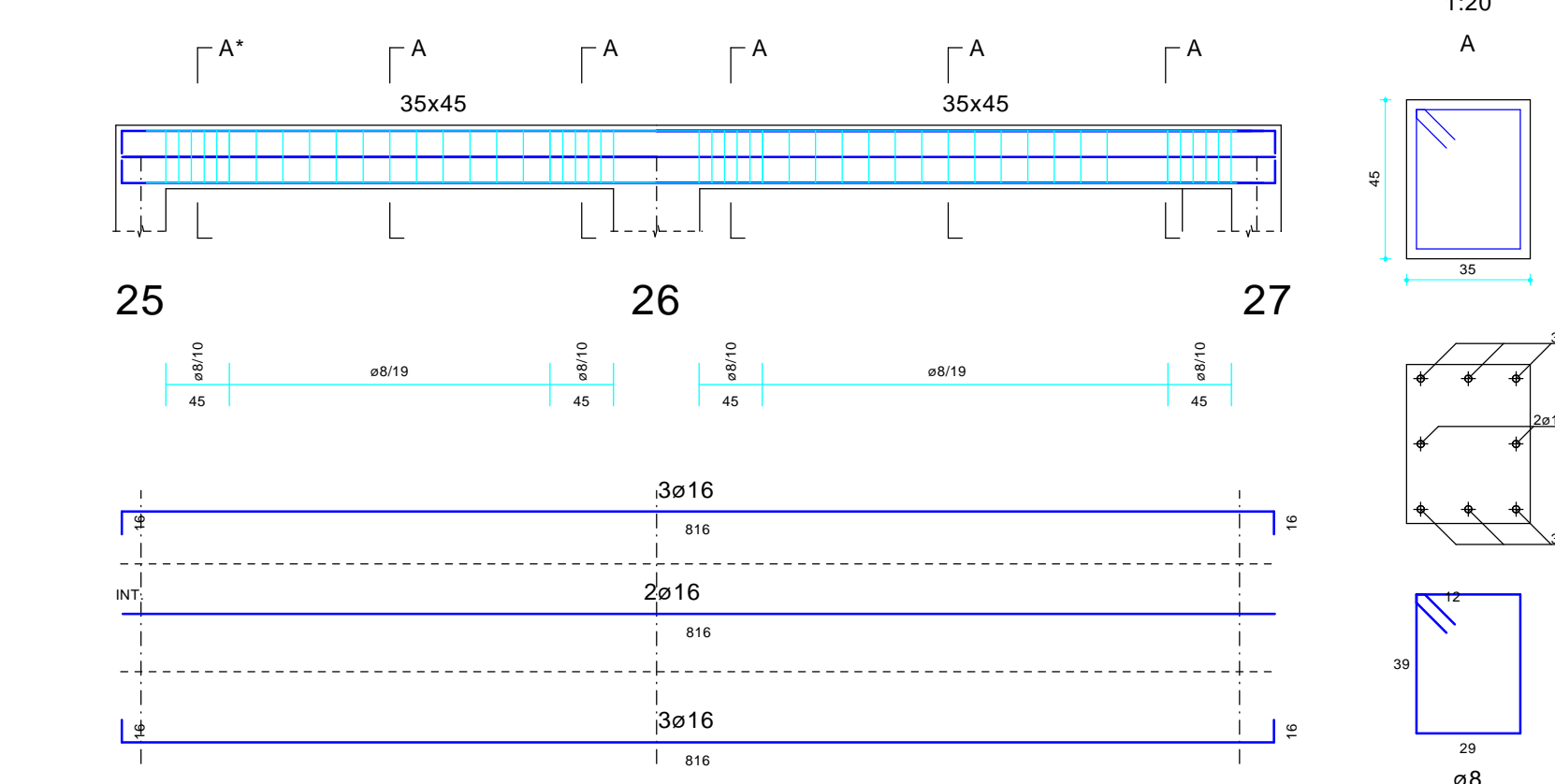
Trave 23-17

1:50



Trave 25-26-27

1:50



comune di
PRATO
codice fiscale: 84006890481

Progetto: **Ampliamento Scuola Primaria di Cafaggio "Laura Poli"**

Titolo: **S12/1 - COPERTURA**

Fase: **PROGETTO ESECUTIVO**

Assessore ai Lavori Pubblici	VALERIO BARBERIS
Servizio di PI	LAVORI PUBBLICI
Dirigente del servizio	Arch. EMILIA QUATTRONE
Responsabile Unico del Procedimento	Arch. LUCA PIANTINI

Progettista Opere Architettoniche
Arch. Diletta Moscardi
Tecnico collaboratore
Geom. Dario Elmi
Progettista Opere Strutturali
Ing. Massimiliano Belgioncini
Progettista Impianti Elettrici e Speciali
Ing. Maurizio Baldanzi
Progettista Impianti Meccanici e Antincendio
Ing. Filippo Bogani
Coordinatore in fase di progettazione
Arch. Luca Piantini

Elaborato: **DISEGNI STRUTTURALI**
Scala: **TRAVI rapp. 1:50, sezioni rapp. 1:20**
Spazio riservato agli uffici
AMBIENTE ORDINARIO
CLASSE DI ESPOSIZIONE XC3
CLASSE DI CONSISTENZA S4-S5
CALCESTRUZZO
PLATEA DI FONDAZIONE E PARETI - C28/35
PILASTRI - C32/40
TRAVI, SOLAI E SCALE - C28/35
ACCIAIO:
in barre B450C
reti e s. B450A
in profilati: S275