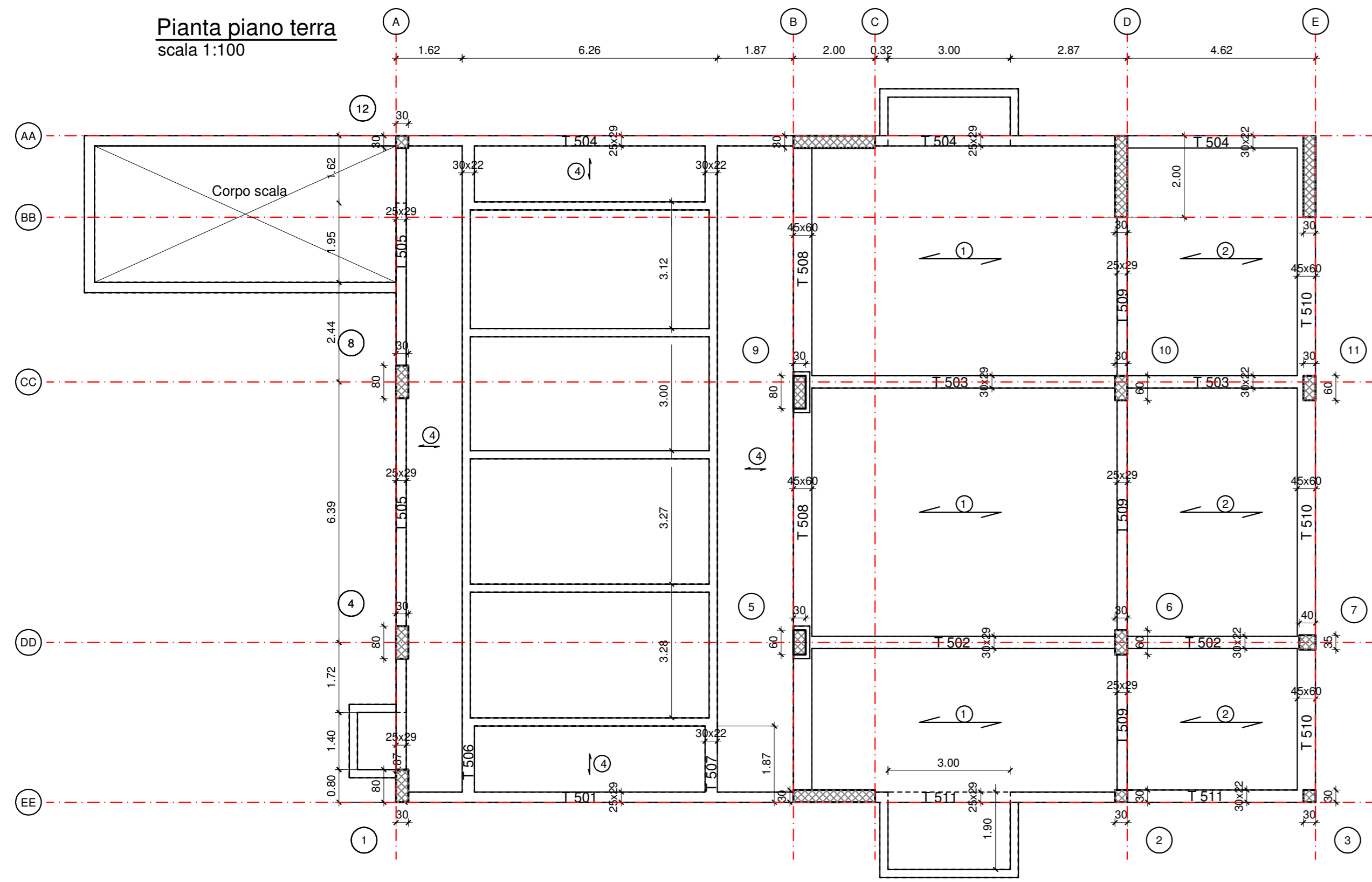
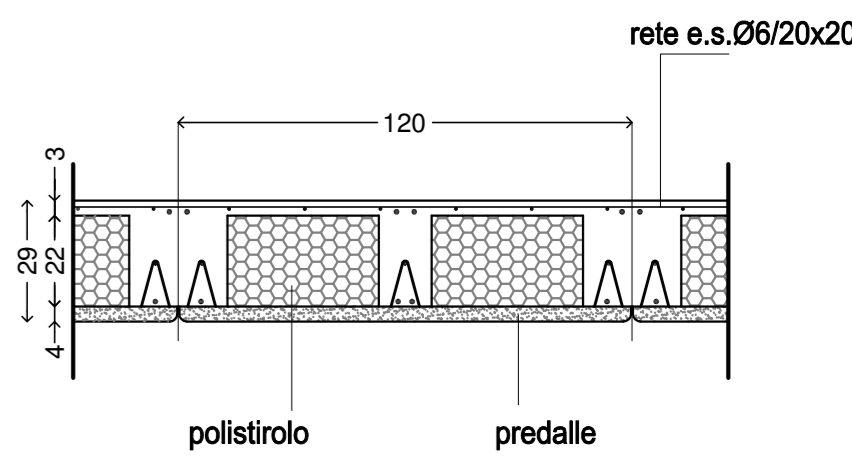


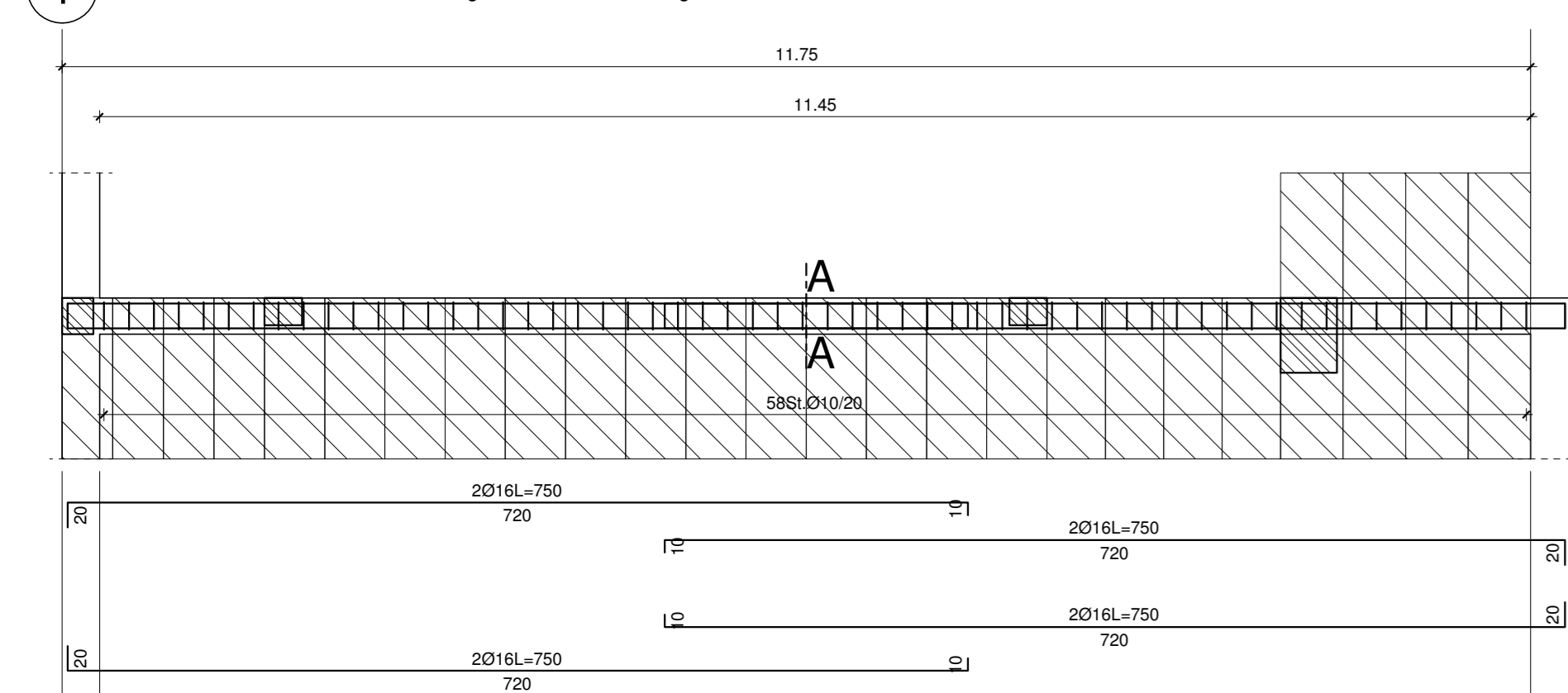
Pianta piano terra
scala 1:100



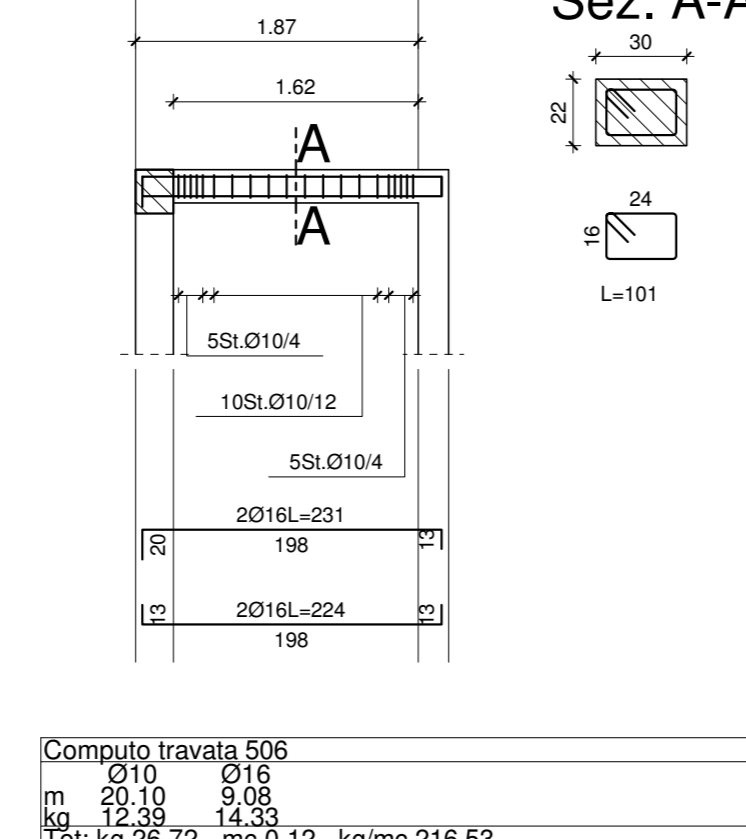
Sezione tipica solaio 1-2
scala 1:20



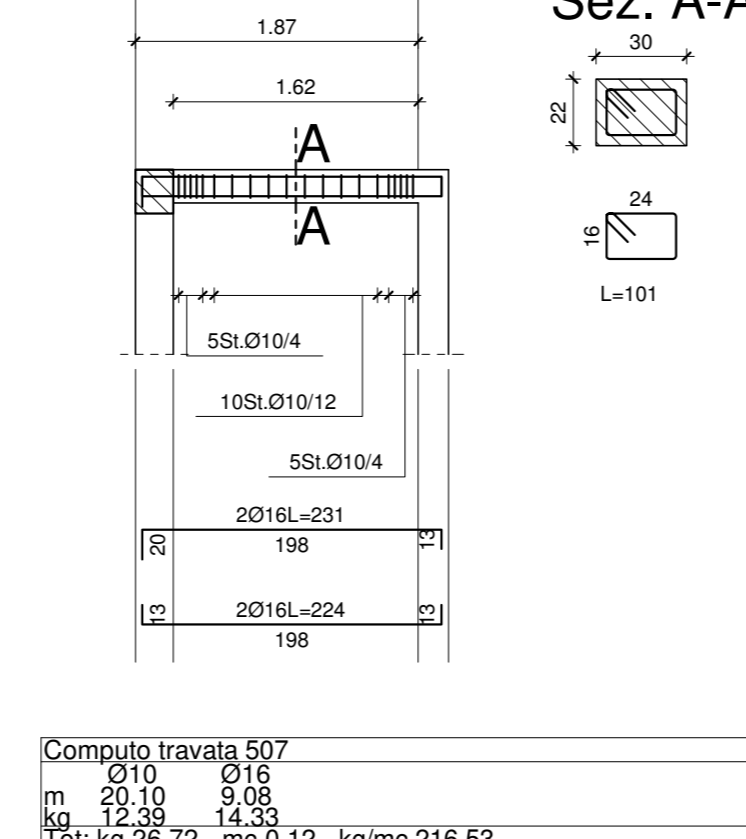
Travata 501
Computo travata 501
m 0,10 0,16 0,20 0,24
m 1,92 4,21 1,10 0,20 1,07 0,4
kg 11,0 7,8 41,2 11,0 81,36 357,38
TGT: kg 601,78 - mc 4,41 - kg/mc 136,32



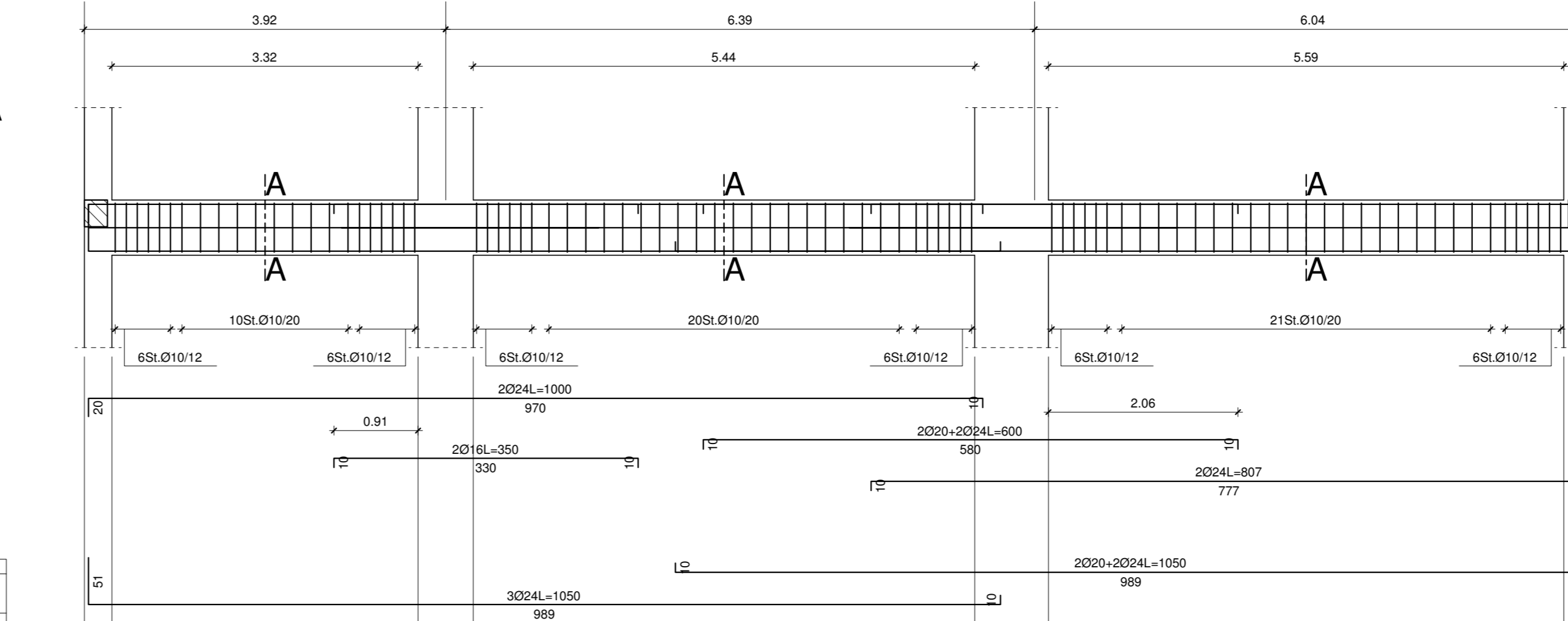
Travata 506
M 102 M 130
Computo travata 506
m 0,10 0,16 0,20 0,24
m 1,92 4,21 1,10 0,20 1,07 0,4
kg 11,0 7,8 41,2 11,0 81,36 357,38
TGT: kg 601,78 - mc 4,41 - kg/mc 136,32



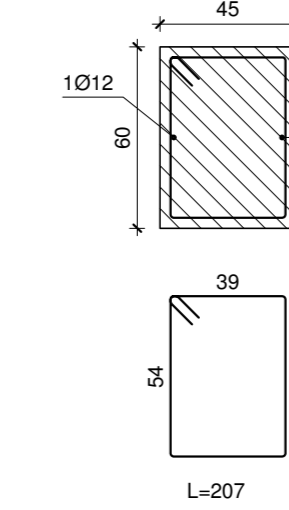
Travata 507
M 102 M 130
Computo travata 507
m 0,10 0,16 0,20 0,24
m 1,92 4,21 1,10 0,20 1,07 0,4
kg 11,0 7,8 41,2 11,0 81,36 357,38
TGT: kg 601,78 - mc 4,41 - kg/mc 136,32



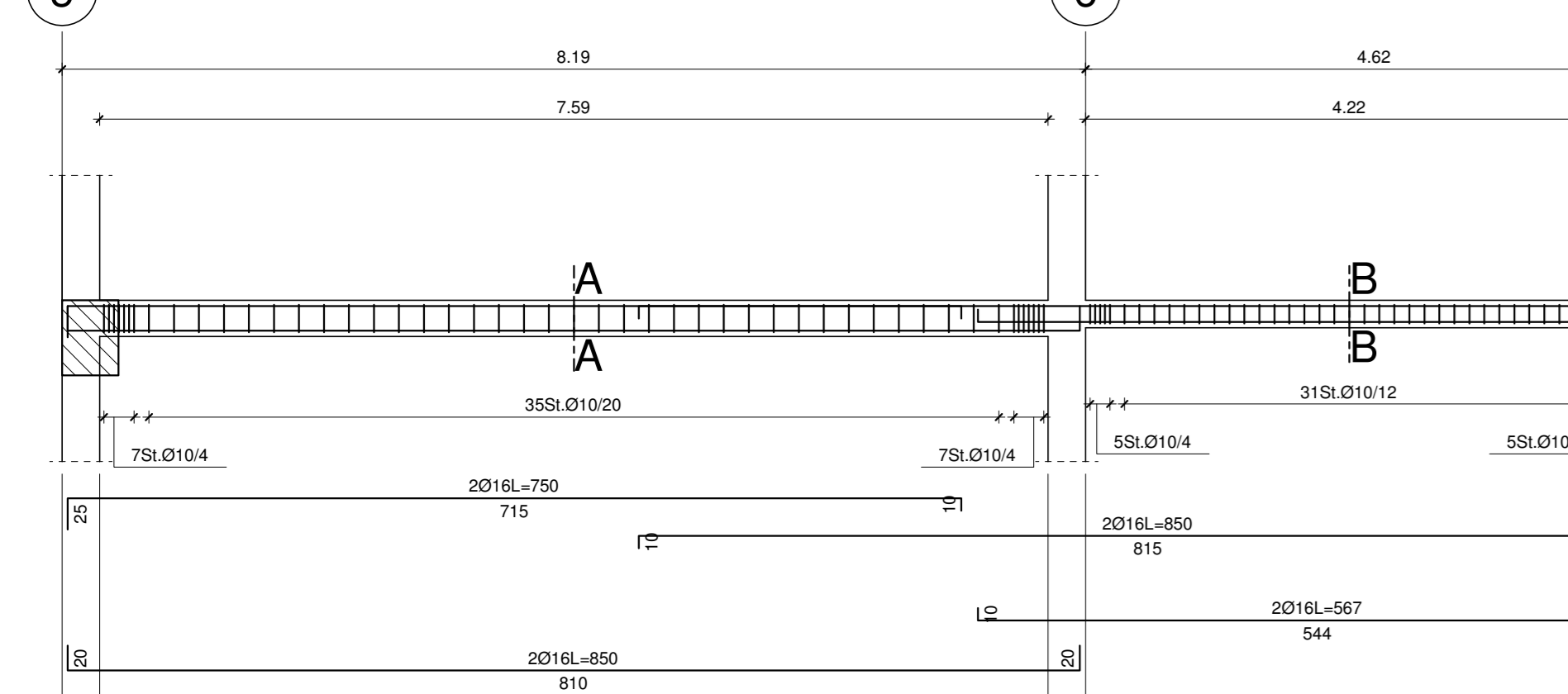
Travata 508
M 102



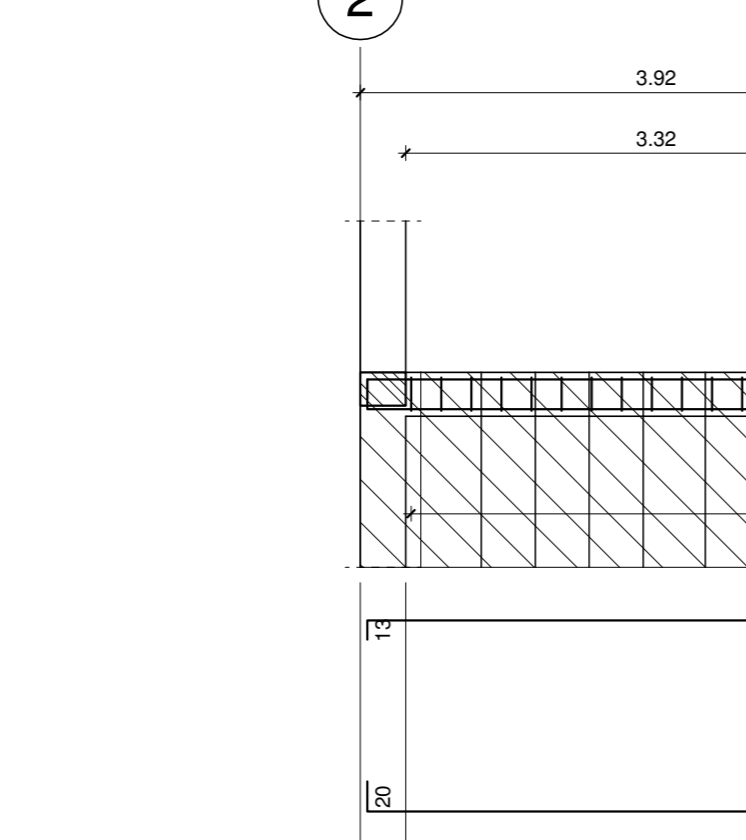
Sez. A-A



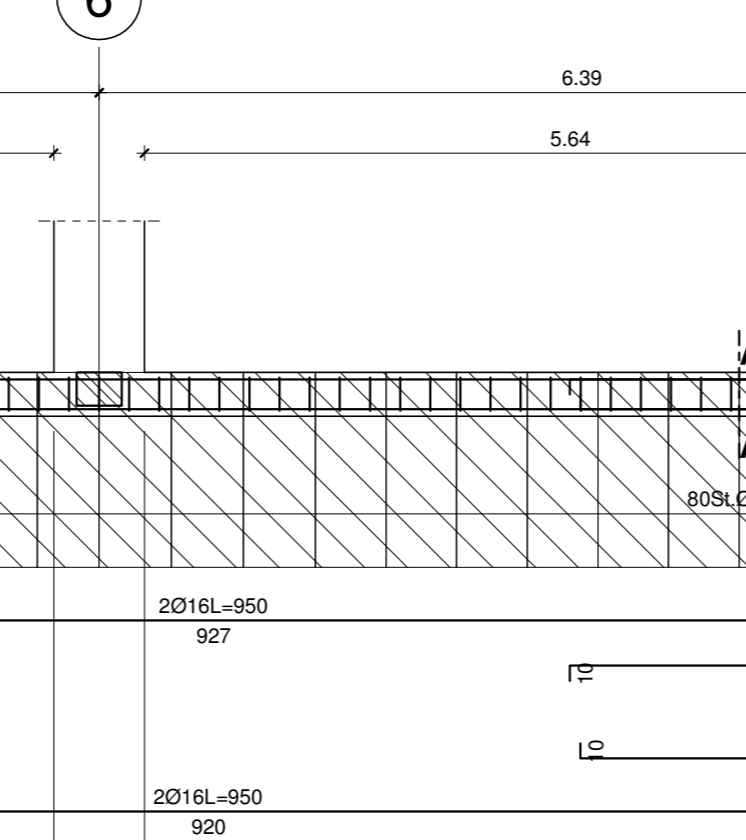
Travata 502
Computo travata 502
m 0,10 0,16 0,20 0,24
m 1,92 4,21 1,10 0,20 1,07 0,4
kg 11,0 7,8 41,2 11,0 81,36 357,38
TGT: kg 601,78 - mc 4,41 - kg/mc 136,32



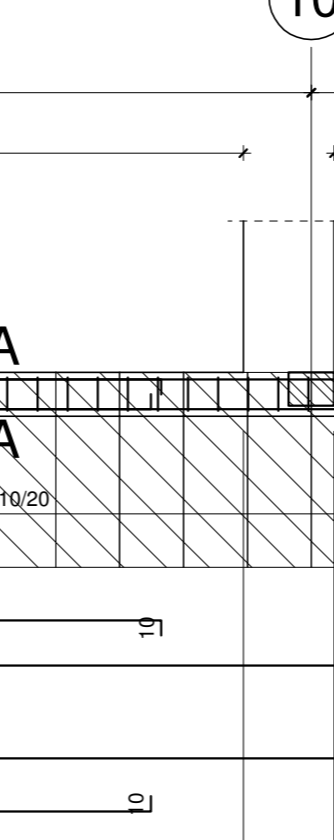
Travata 509
Computo travata 509
m 0,10 0,16 0,20 0,24
m 1,92 4,21 1,10 0,20 1,07 0,4
kg 11,0 7,8 41,2 11,0 81,36 357,38
TGT: kg 601,78 - mc 4,41 - kg/mc 136,32



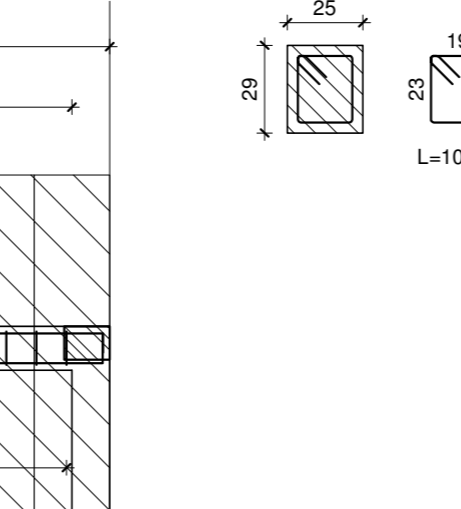
Travata 510
Computo travata 510
m 0,10 0,16 0,20 0,24
m 1,92 4,21 1,10 0,20 1,07 0,4
kg 11,0 7,8 41,2 11,0 81,36 357,38
TGT: kg 601,78 - mc 4,41 - kg/mc 136,32



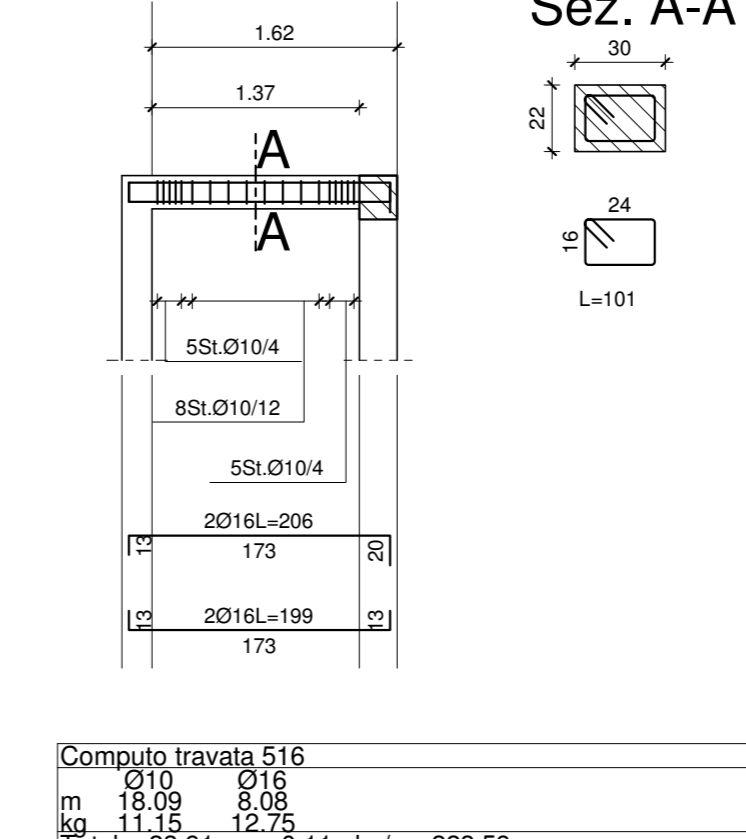
Travata 511
Computo travata 511
m 0,10 0,16 0,20 0,24
m 1,92 4,21 1,10 0,20 1,07 0,4
kg 11,0 7,8 41,2 11,0 81,36 357,38
TGT: kg 601,78 - mc 4,41 - kg/mc 136,32



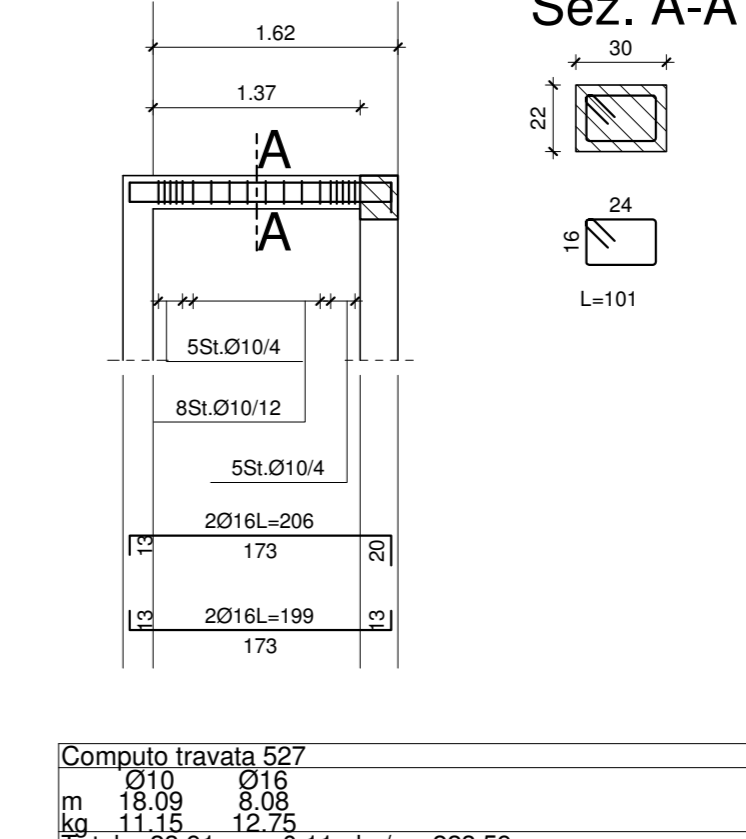
Sez. A-A



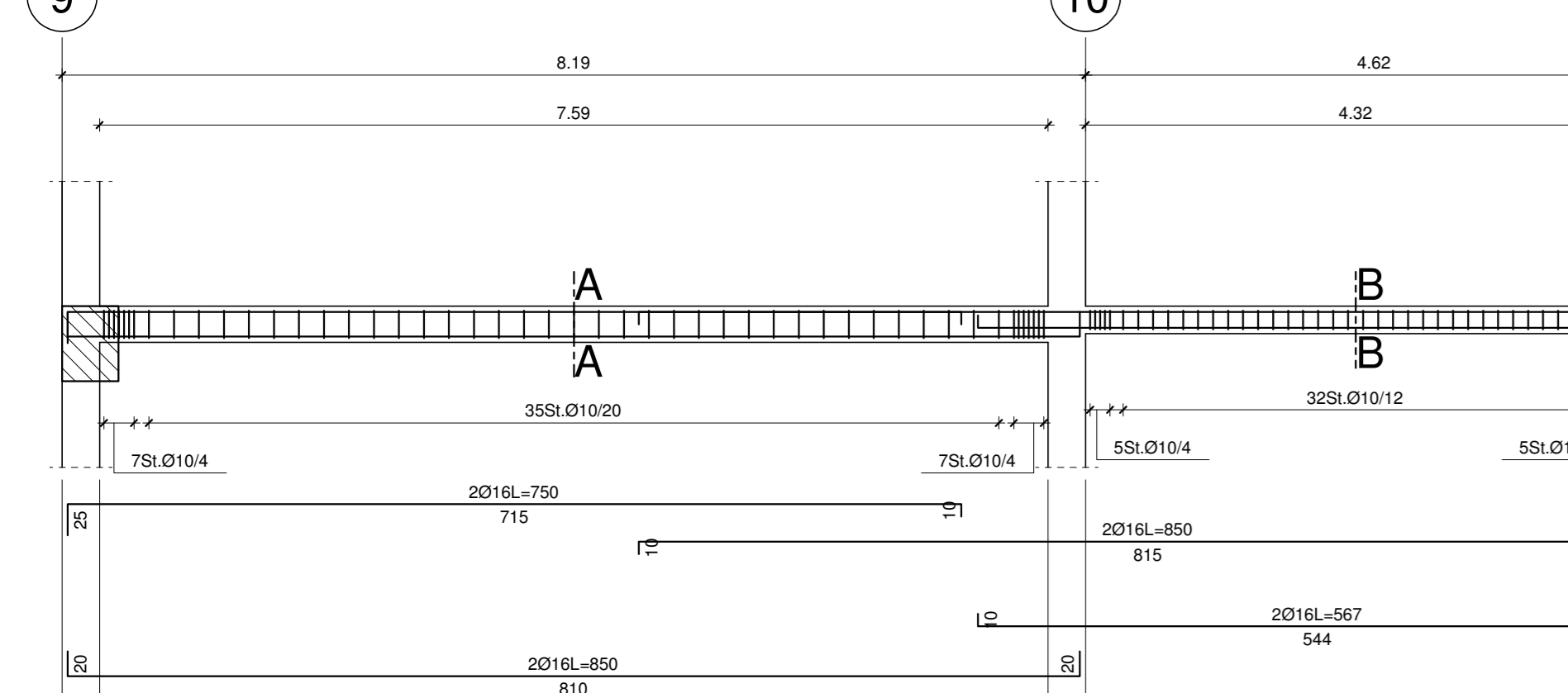
Travata 516
M 126 M 110
Computo travata 516
m 0,10 0,16 0,20 0,24
m 1,92 4,21 1,10 0,20 1,07 0,4
kg 11,0 7,8 41,2 11,0 81,36 357,38
TGT: kg 601,78 - mc 4,41 - kg/mc 136,32



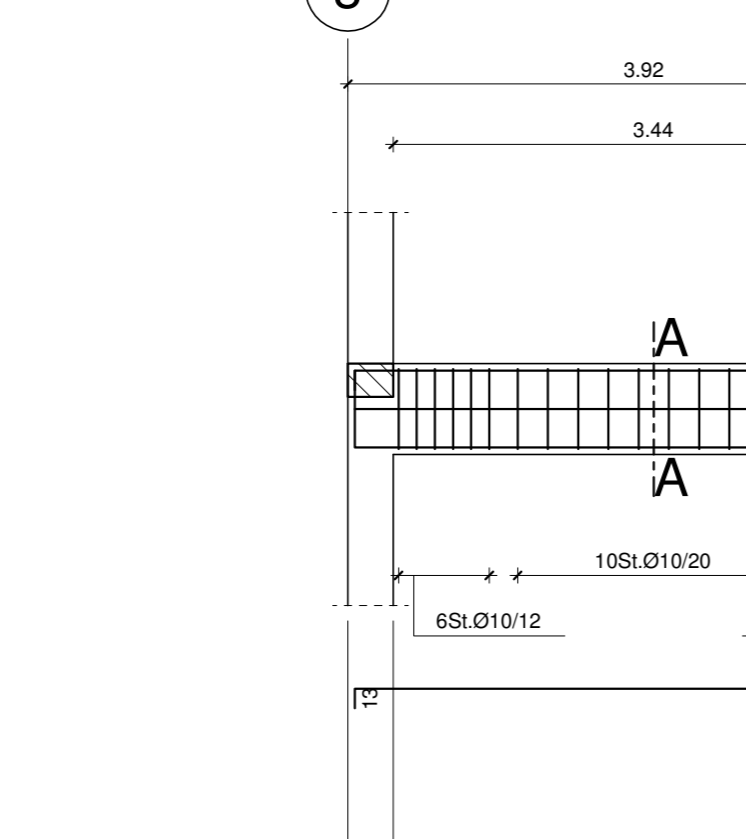
Travata 527
M 126 M 110
Computo travata 527
m 0,10 0,16 0,20 0,24
m 1,92 4,21 1,10 0,20 1,07 0,4
kg 11,0 7,8 41,2 11,0 81,36 357,38
TGT: kg 601,78 - mc 4,41 - kg/mc 136,32



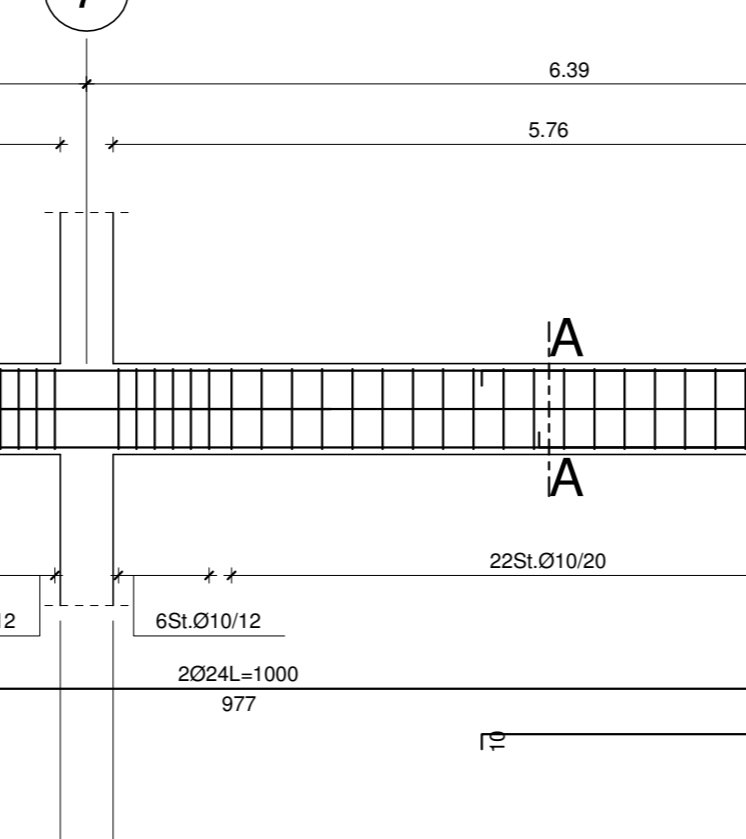
Travata 503
Computo travata 503
m 0,10 0,16 0,20 0,24
m 1,92 4,21 1,10 0,20 1,07 0,4
kg 11,0 7,8 41,2 11,0 81,36 357,38
TGT: kg 601,78 - mc 4,41 - kg/mc 136,32



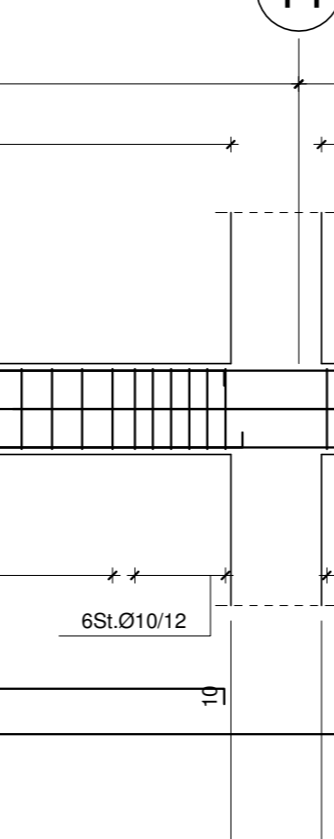
Travata 510
Computo travata 510
m 0,10 0,16 0,20 0,24
m 1,92 4,21 1,10 0,20 1,07 0,4
kg 11,0 7,8 41,2 11,0 81,36 357,38
TGT: kg 601,78 - mc 4,41 - kg/mc 136,32



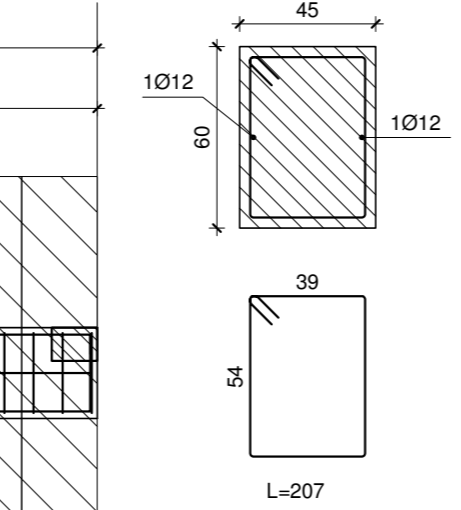
Travata 510
Computo travata 510
m 0,10 0,16 0,20 0,24
m 1,92 4,21 1,10 0,20 1,07 0,4
kg 11,0 7,8 41,2 11,0 81,36 357,38
TGT: kg 601,78 - mc 4,41 - kg/mc 136,32



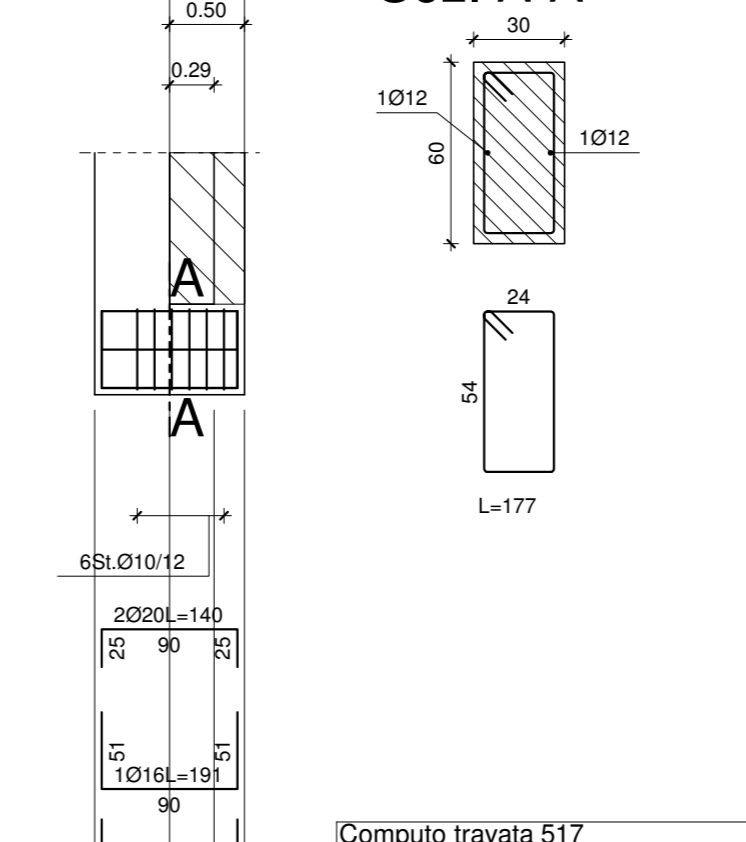
Travata 511
Computo travata 511
m 0,10 0,16 0,20 0,24
m 1,92 4,21 1,10 0,20 1,07 0,4
kg 11,0 7,8 41,2 11,0 81,36 357,38
TGT: kg 601,78 - mc 4,41 - kg/mc 136,32



Sez. A-A



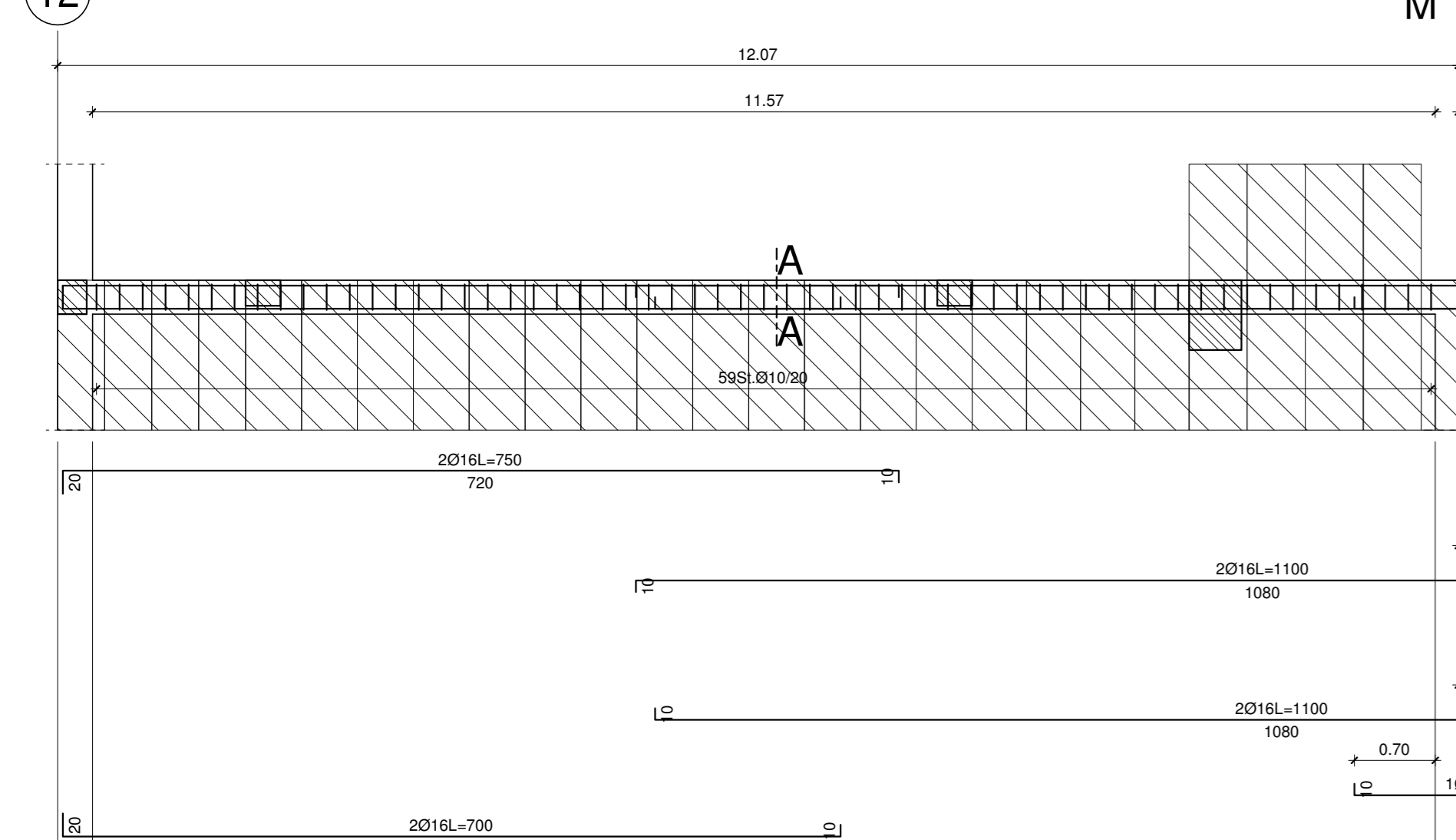
Travata 517
M 126
Computo travata 517
m 0,10 0,16 0,20 0,24
m 1,92 4,21 1,10 0,20 1,07 0,4
kg 11,0 7,8 41,2 11,0 81,36 357,38
TGT: kg 601,78 - mc 4,41 - kg/mc 136,32



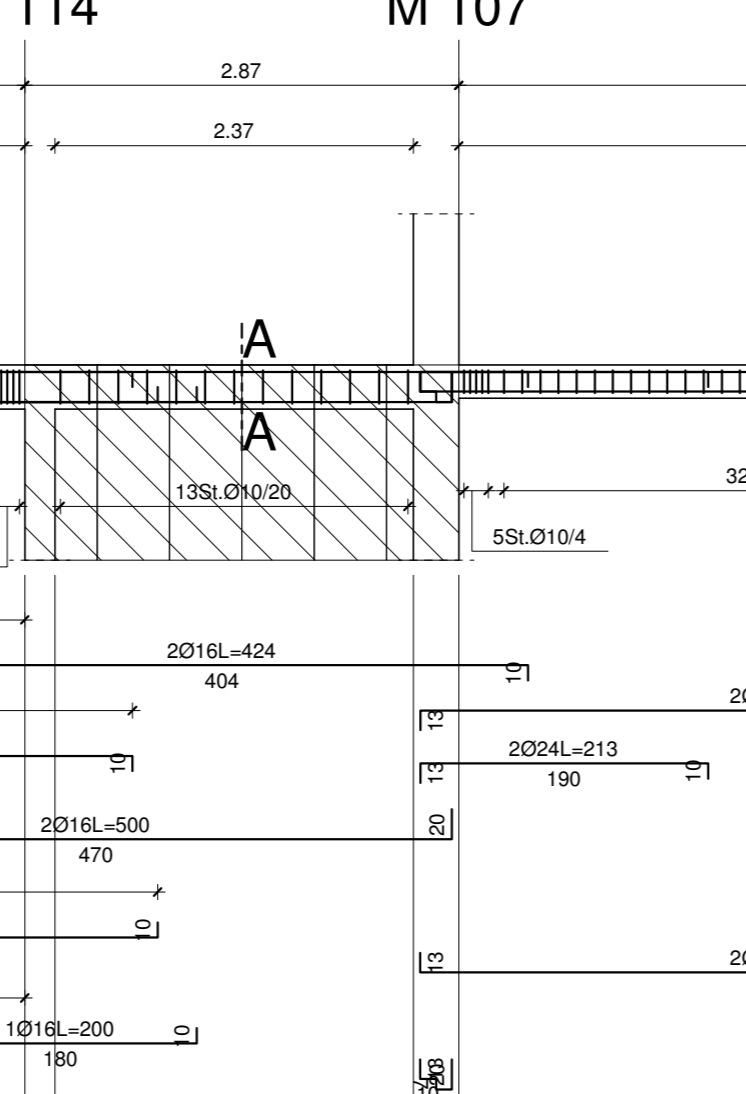
Travata 517
M 126
Computo travata 517
m 0,10 0,16 0,20 0,24
m 1,92 4,21 1,10 0,20 1,07 0,4
kg 11,0 7,8 41,2 11,0 81,36 357,38
TGT: kg 601,78 - mc 4,41 - kg/mc 136,32



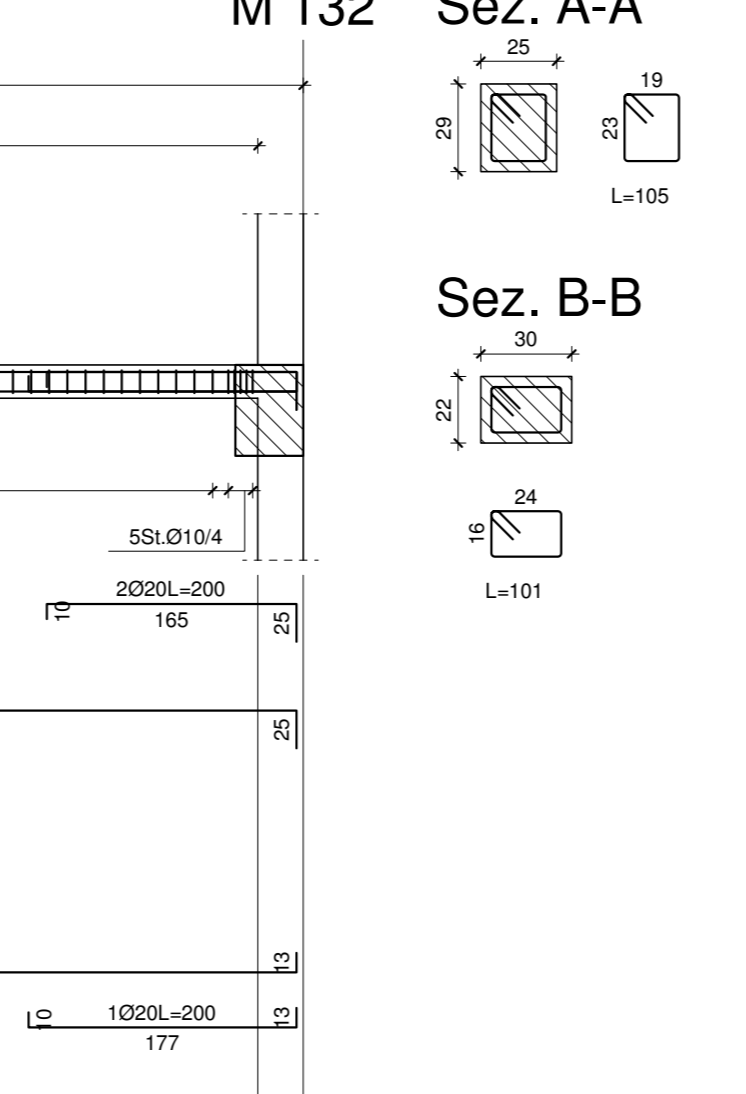
Travata 504
Computo travata 504
m 0,10 0,16 0,20 0,24
m 1,92 4,21 1,10 0,20 1,07 0,4
kg 11,0 7,8 41,2 11,0 81,36 357,38
TGT: kg 601,78 - mc 4,41 - kg/mc 136,32



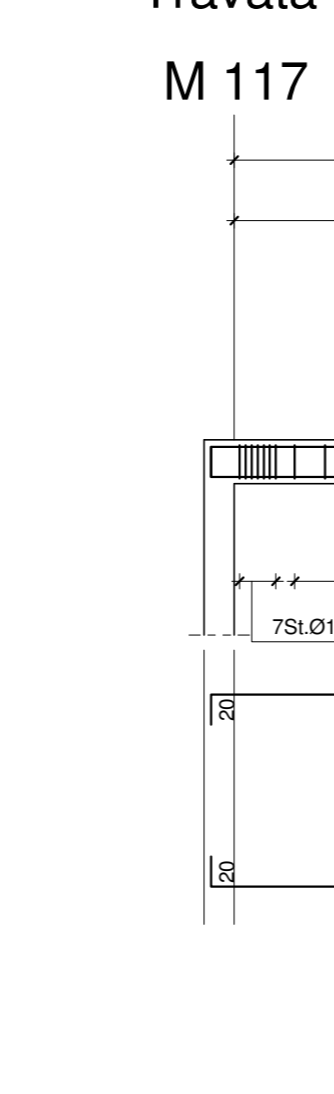
Travata 510
Computo travata 510
m 0,10 0,16 0,20 0,24
m 1,92 4,21 1,10 0,20 1,07 0,4
kg 11,0 7,8 41,2 11,0 81,36 357,38
TGT: kg 601,78 - mc 4,41 - kg/mc 136,32



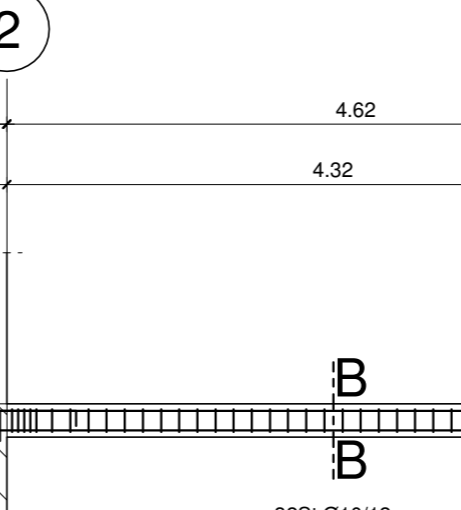
Travata 510
Computo travata 510
m 0,10 0,16 0,20 0,24
m 1,92 4,21 1,10 0,20 1,07 0,4
kg 11,0 7,8 41,2 11,0 81,36 357,38
TGT: kg 601,78 - mc 4,41 - kg/mc 136,32



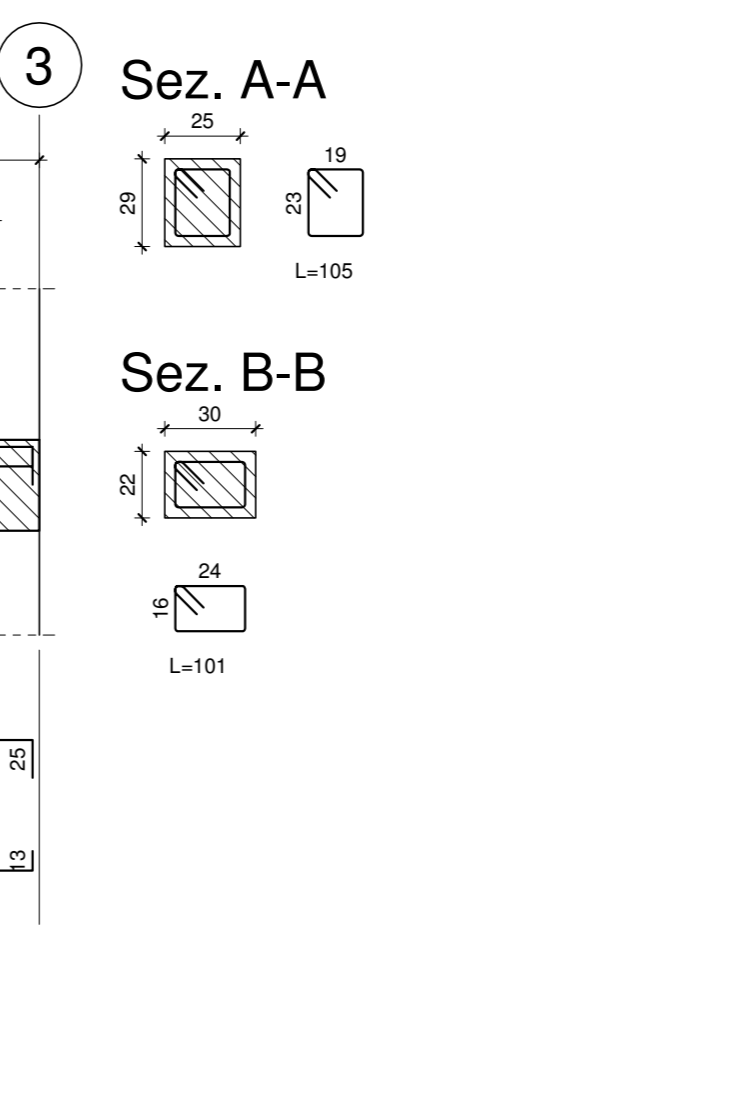
Travata 511
Computo travata 511
m 0,10 0,16 0,20 0,24
m 1,92 4,21 1,10 0,20 1,07 0,4
kg 11,0 7,8 41,2 11,0 81,36 357,38
TGT: kg 601,78 - mc 4,41 - kg/mc 136,32



Sez. A-A



Travata 511
Computo travata 511
m 0,10 0,16 0,20 0,24
m 1,92 4,21 1,10 0,20 1,07 0,4
kg 11,0 7,8 41,2 11,0 81,36 357,38
TGT: kg 601,78 - mc 4,41 - kg/mc 136,32



Travata 511
Computo travata 511
m 0,10 0,16 0,20 0,24
m 1,92 4,21 1,10 0,20 1,07 0,4
kg 11,0 7,8 41,2 11,0 81,36 357,38
TGT: kg 601,78 - mc 4,41 - kg/mc 136,32



comune di PRATO
Cof. Fiscale 8408090541

Progetto: **Nuovo complesso riabilitativo e terapeutico in Via Roma**
Titolo: **ARMATURA TRAVI PIANO TERRA**

Fase: **ESECUTIVO**

Assessore ai lavori pubblici: **Valerio Barberis**
Servizio Lavori Pubblici

Dirigente del Servizio: **Arch. Emilia Quattrone**
Responsabile Unico del Procedimento: **Arch. Luca Piantini**

Progettisti:
Arch. Luca Piantini
Geom. Francesca Logli
Arch. Stefano Daddi (collab.)

Progetto strutturale: **Ing. Francesco Sanzo**
Impianti elettrici: **Ing. Gianmario Favarelli**
Impianti meccanici: **Ing. Silvia D'Agostino**
Progetto di conformità antincendio: **Arch. Alberto Banchini**
Coord. sicurezza in fase di progetto ed esecuzione: **Geom. Giovanni Santi**

Elaborato: **ST_02**
Scala: **varie**
Spazio riservato agli uffici:

© Copyright Comune di Prato - Servizio Lavori Pubblici
è vietata la riproduzione anche parziale del documento **data: novembre 2016**