

Assessore ai lavori pubblici Filippo Alessi
Servizio PF: Governo del territorio
Dirigente del Servizio Arch. Riccardo Pecorario
Responsabile Unico del Procedimento Ing. Giovanni Nerini

Progettisti

Progetto Opere Architettoniche
Ing. Iuri Baldi
Geom. Elisabetta Santi

Progettista Int. Miglioramento Sismico
Ing. Francesco Sanzo

Progetto Energetico
Ing. Ir. Giovanni Nerini
Ing. Iuri Baldi

Coordinatore in fase di progettazione
Ing. Simone Arrigucci

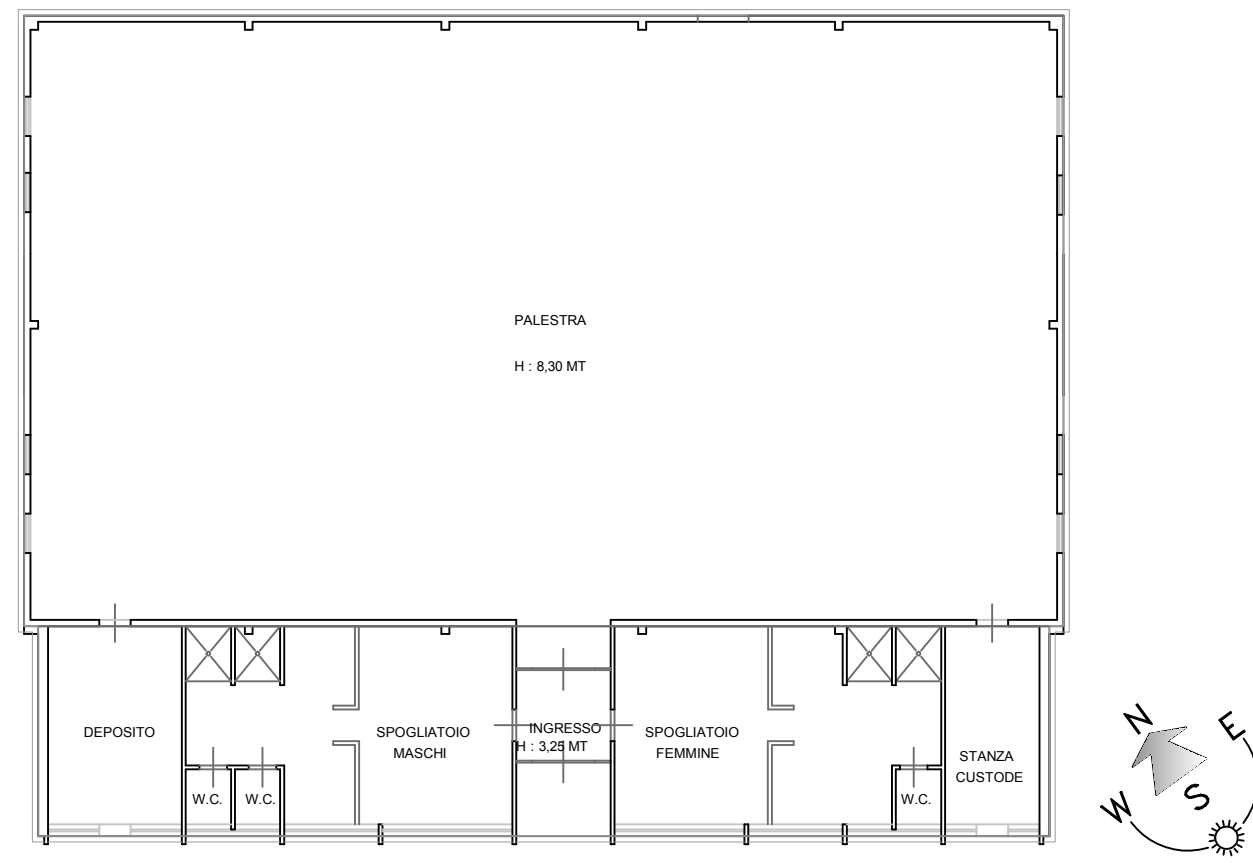
Redazione Elaborati Grafici
Arch. Virginia Cammarere
Geom. Chiara Matteoli
Geom. Giacomo Giovanchelli



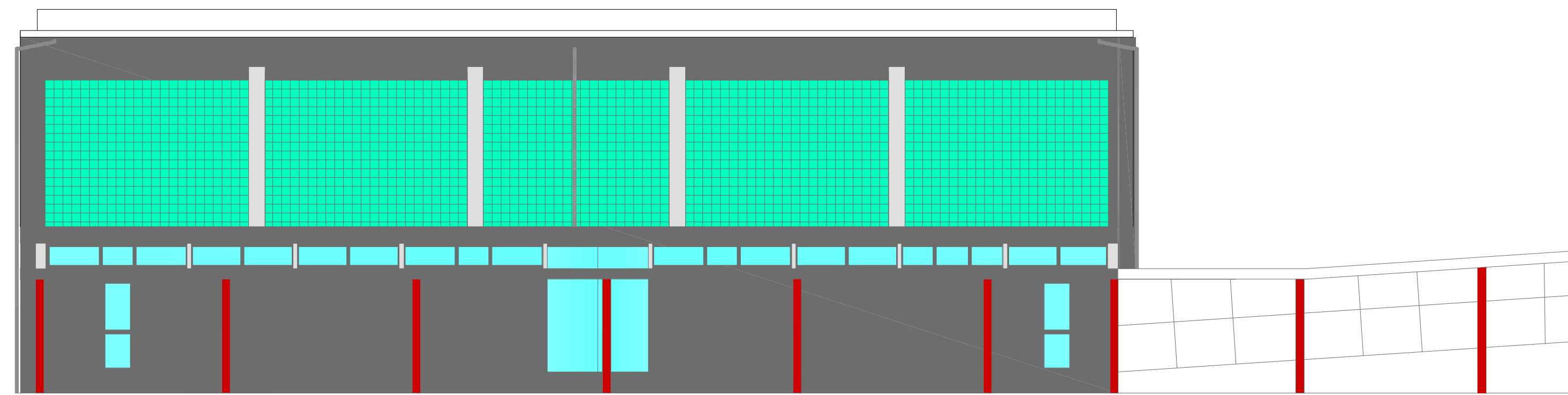
Tav.: 02

Scala: 1/200 - 1/100

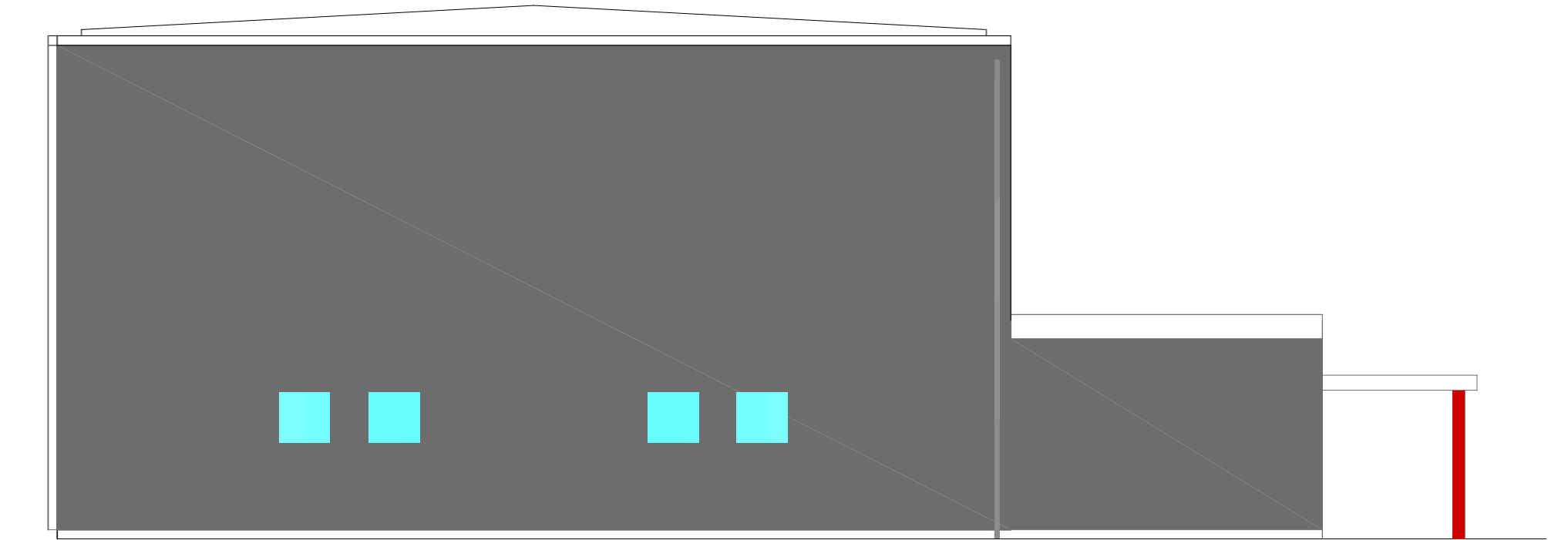
Spazio riservato agli uffici.



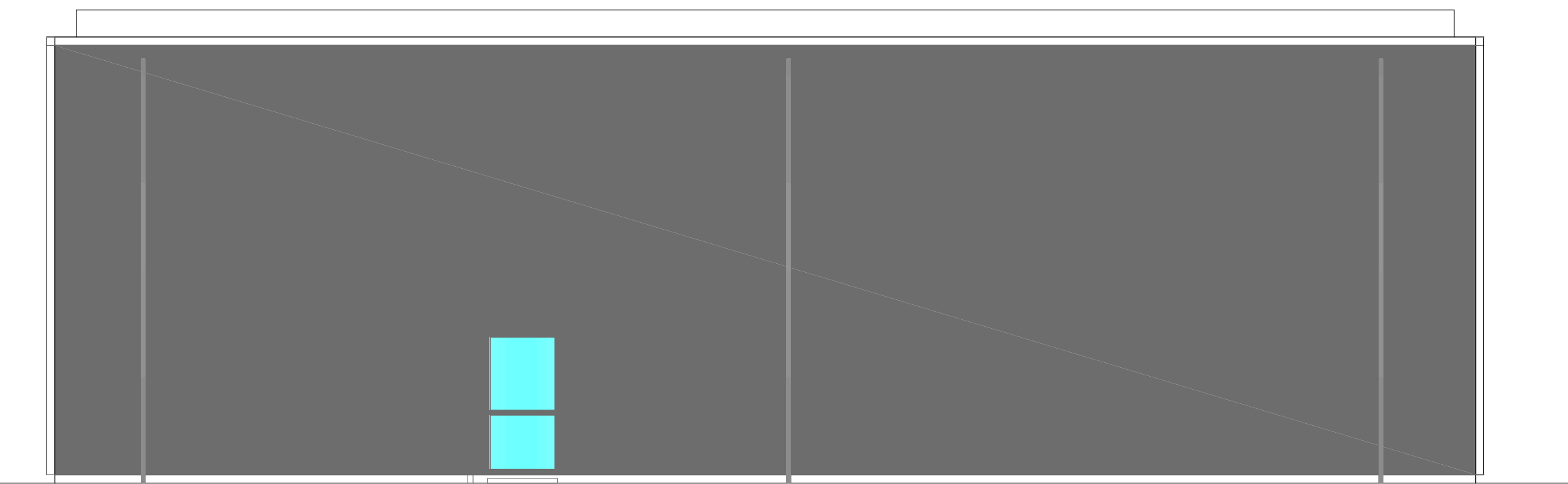
Pianta palestra
Scala 1:200



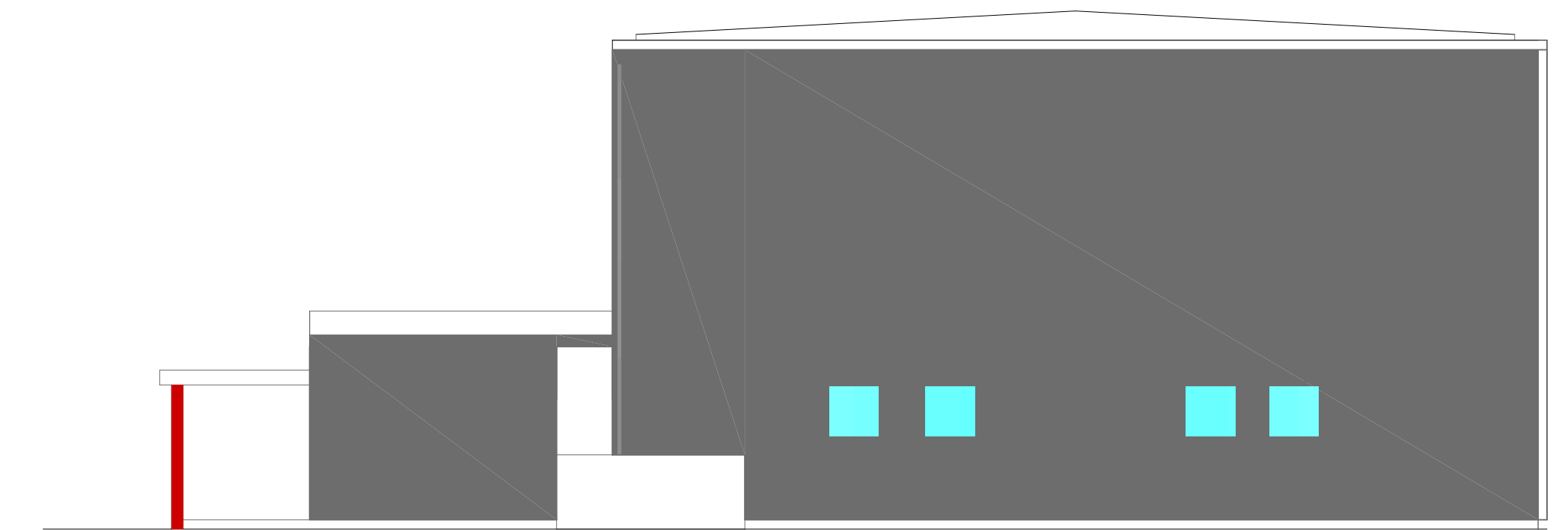
Prospetto sud
Scala 1:100



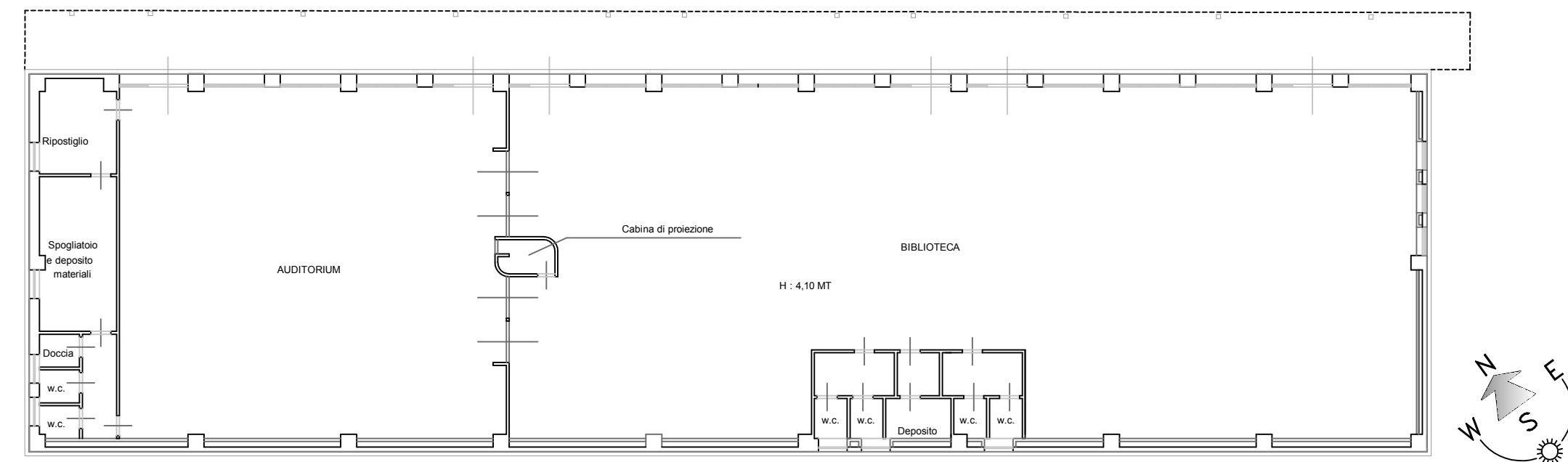
Prospetto ovest
Scala 1:100



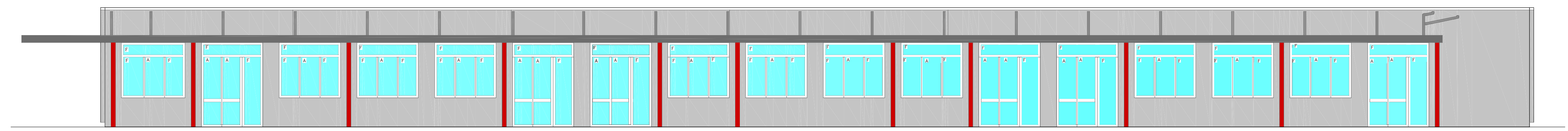
Prospetto nord
Scala 1:100



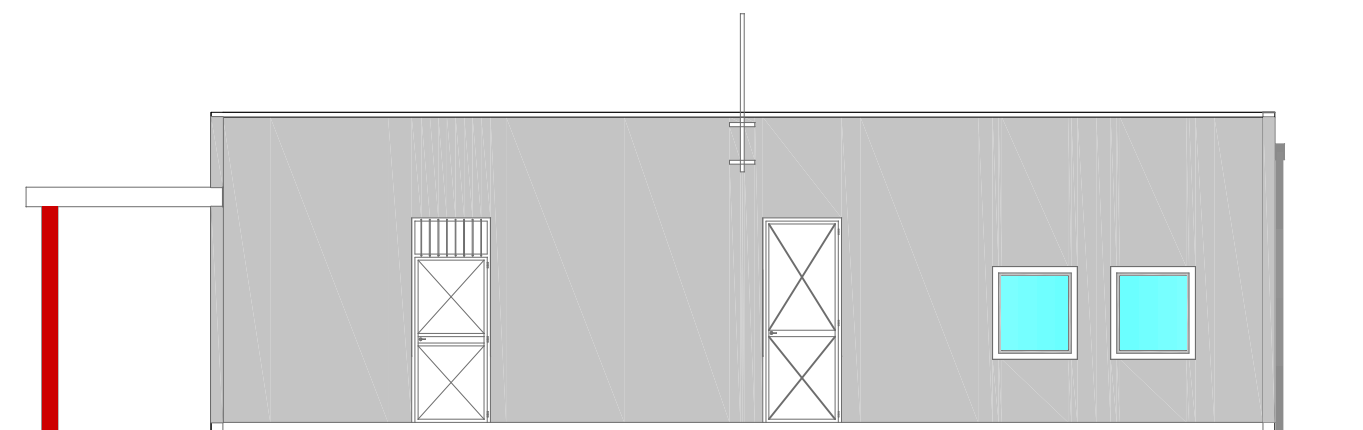
Prospetto est
Scala 1:100



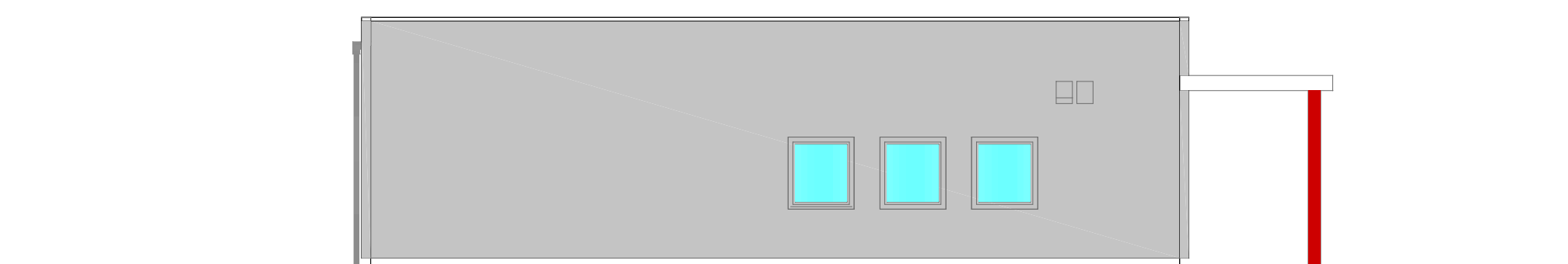
Pianta biblioteca
Scala 1:200



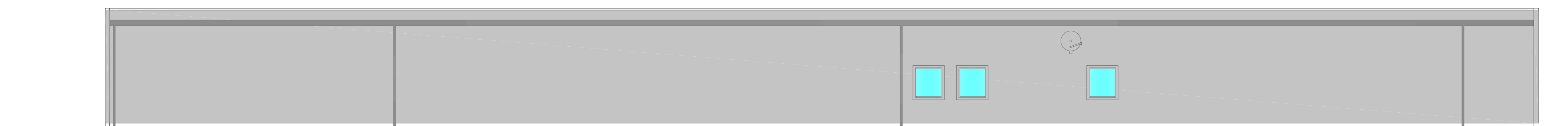
Prospetto nord
Scala 1:100



Prospetto ovest
Scala 1:100



Prospetto est
Scala 1:100



Prospetto sud
Scala 1:100