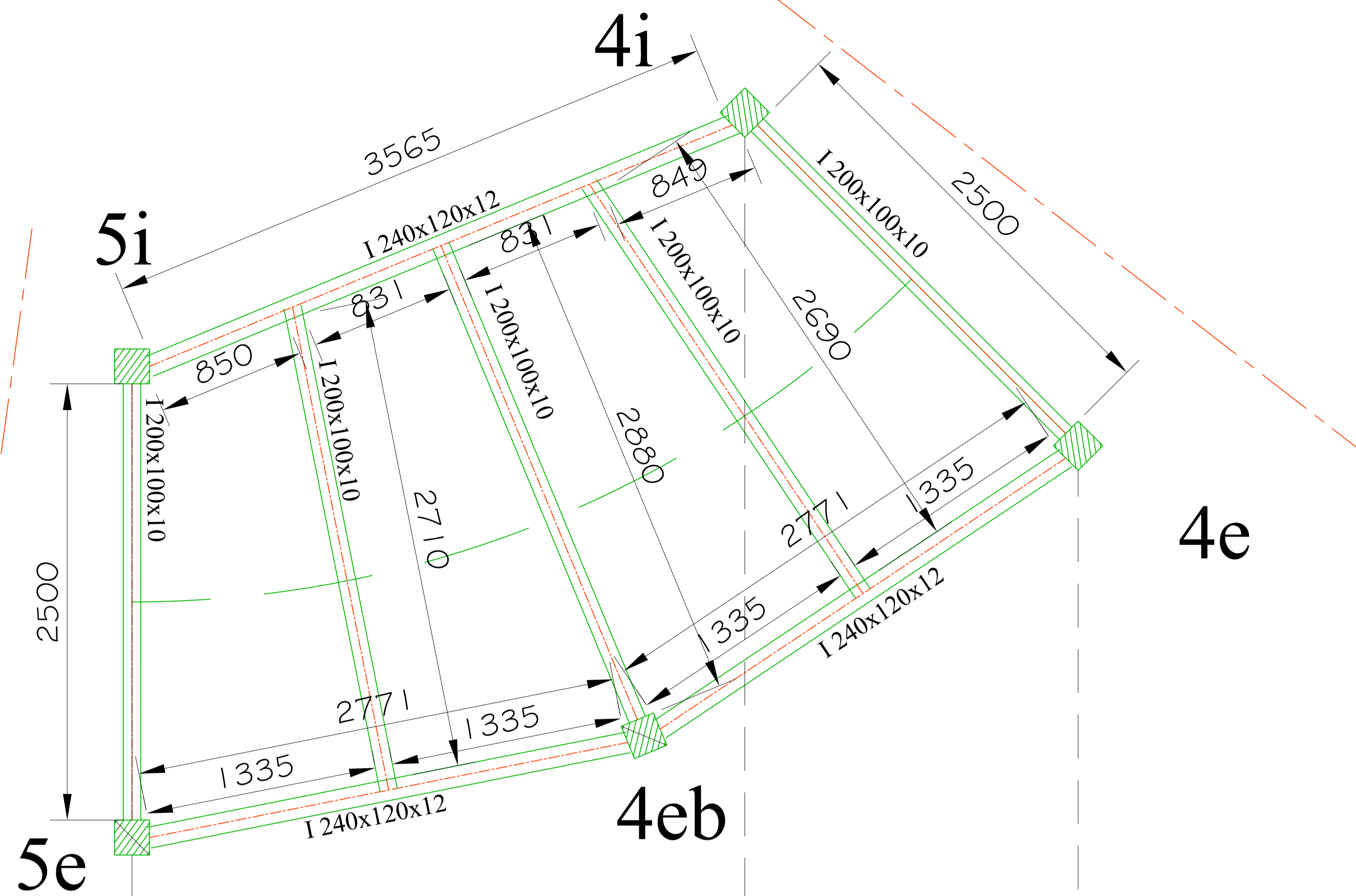
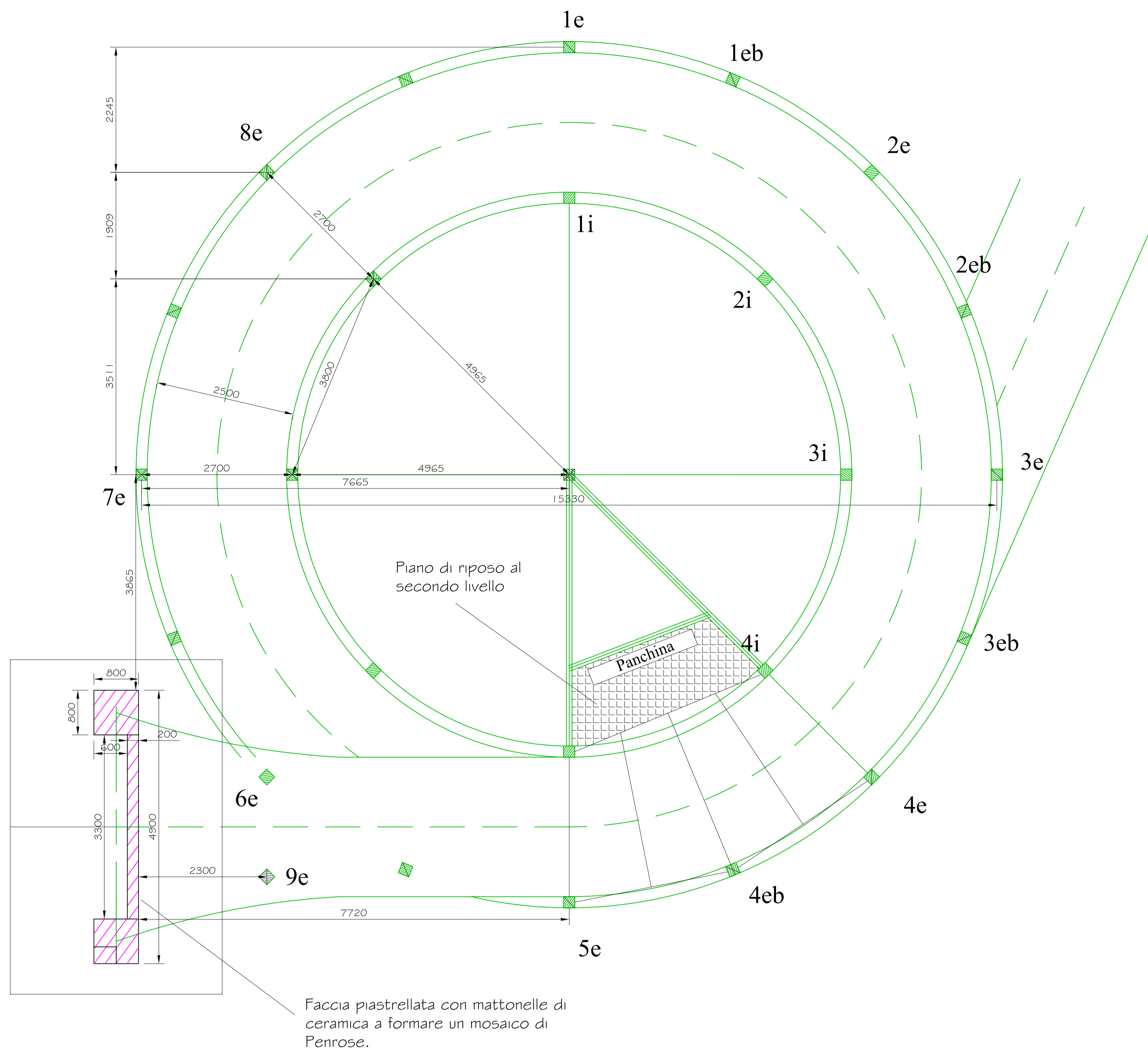


Scala 1:20



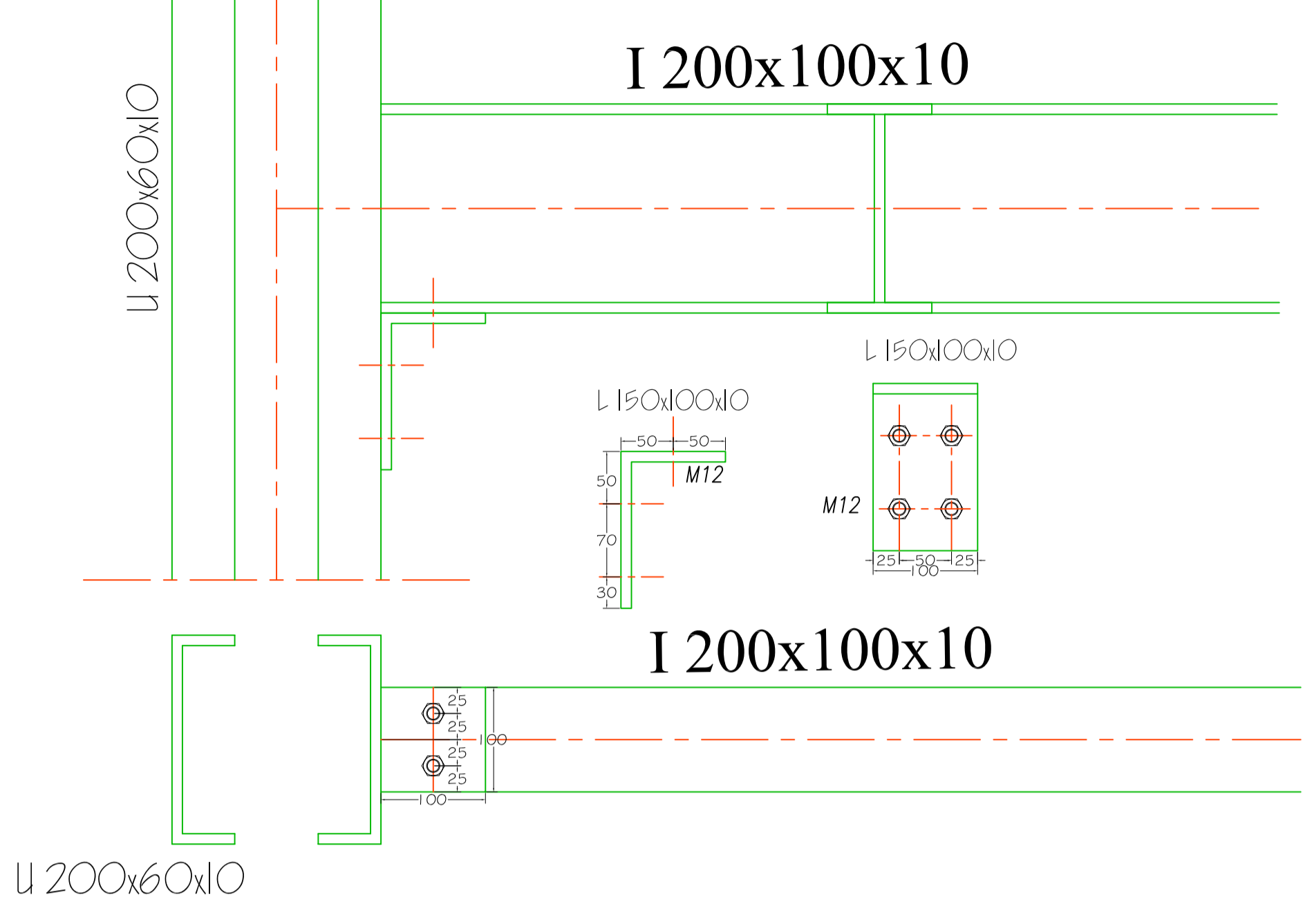
Scala 1:20

Rampe di accesso

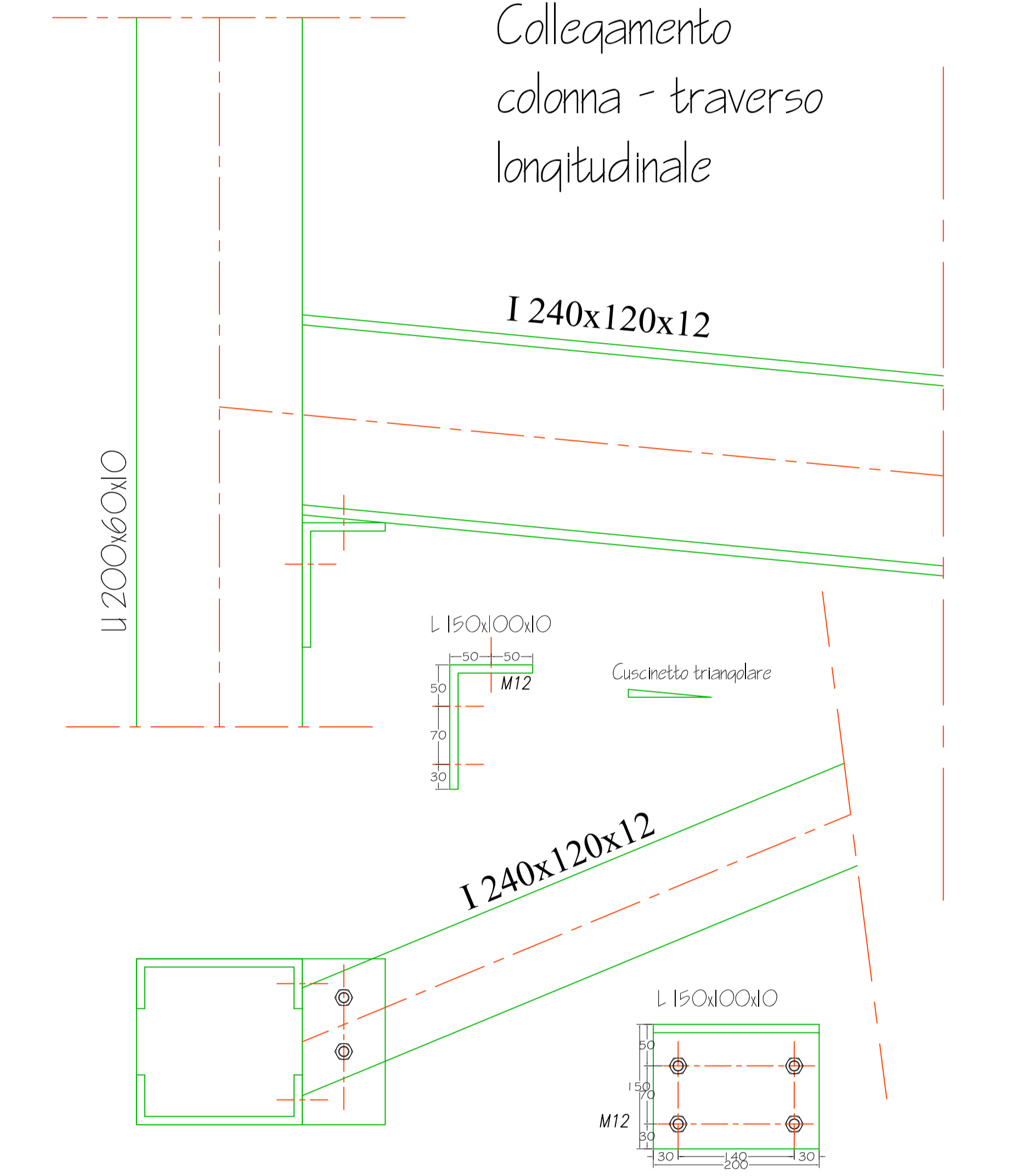


Scala 1:5

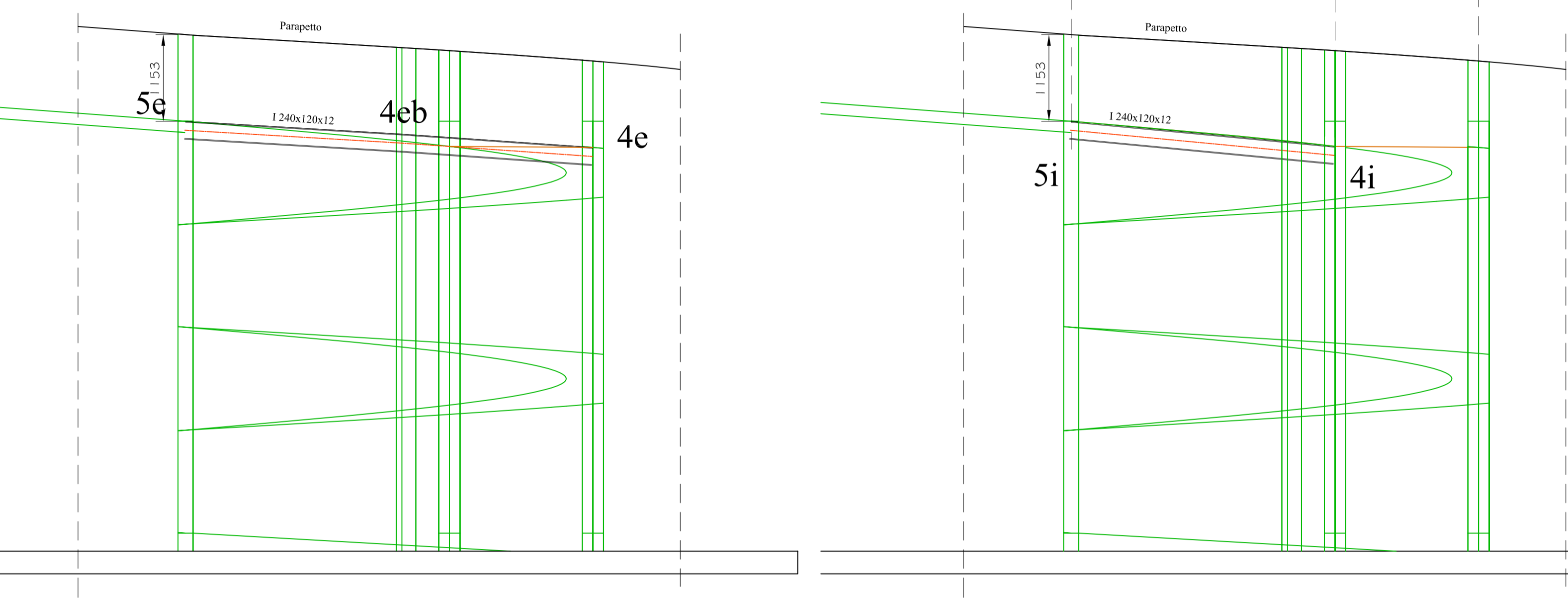
Collegamento
colonna - trasverso radiale



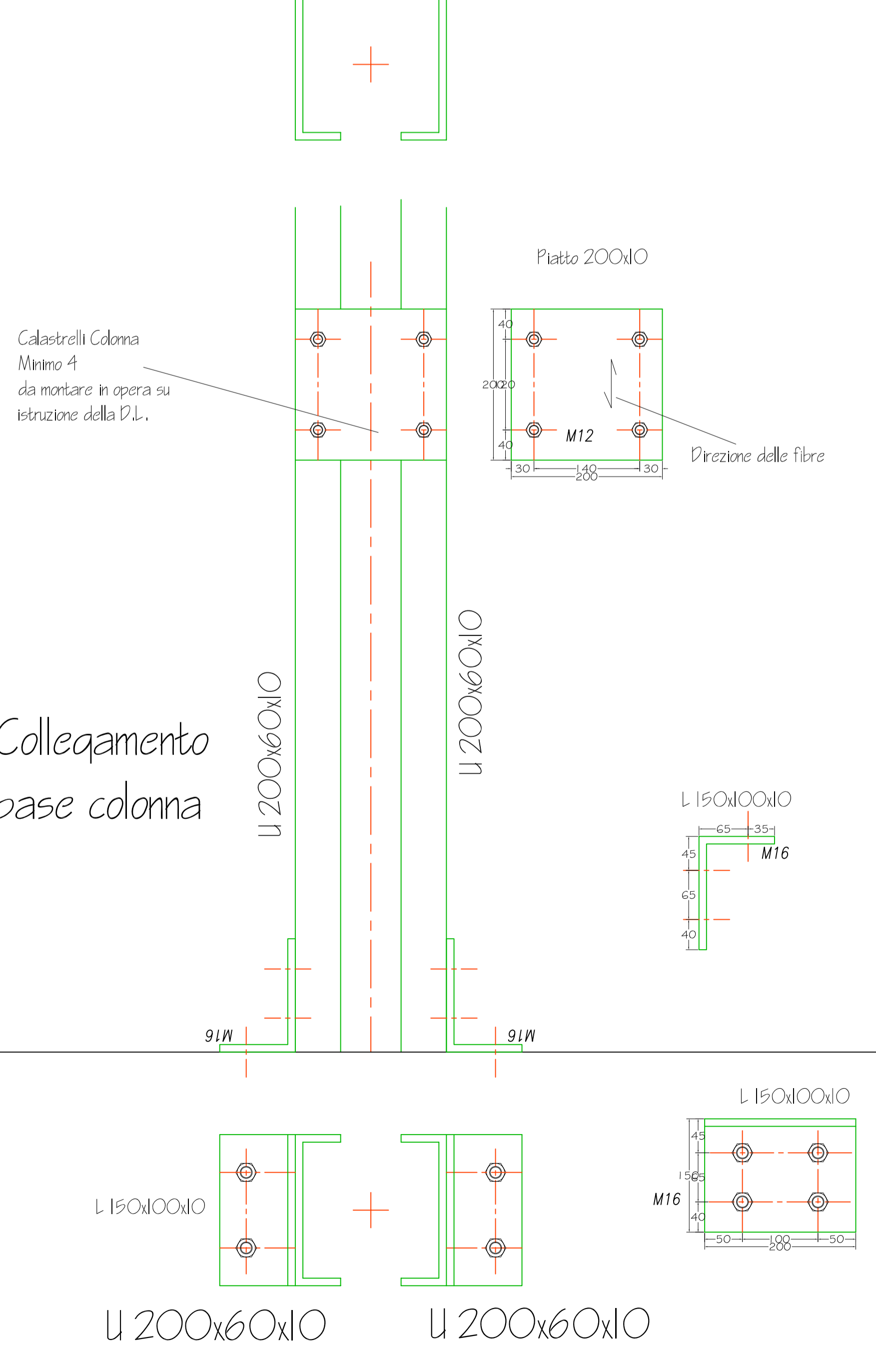
Collegamento
colonna - trasverso
longitudinale



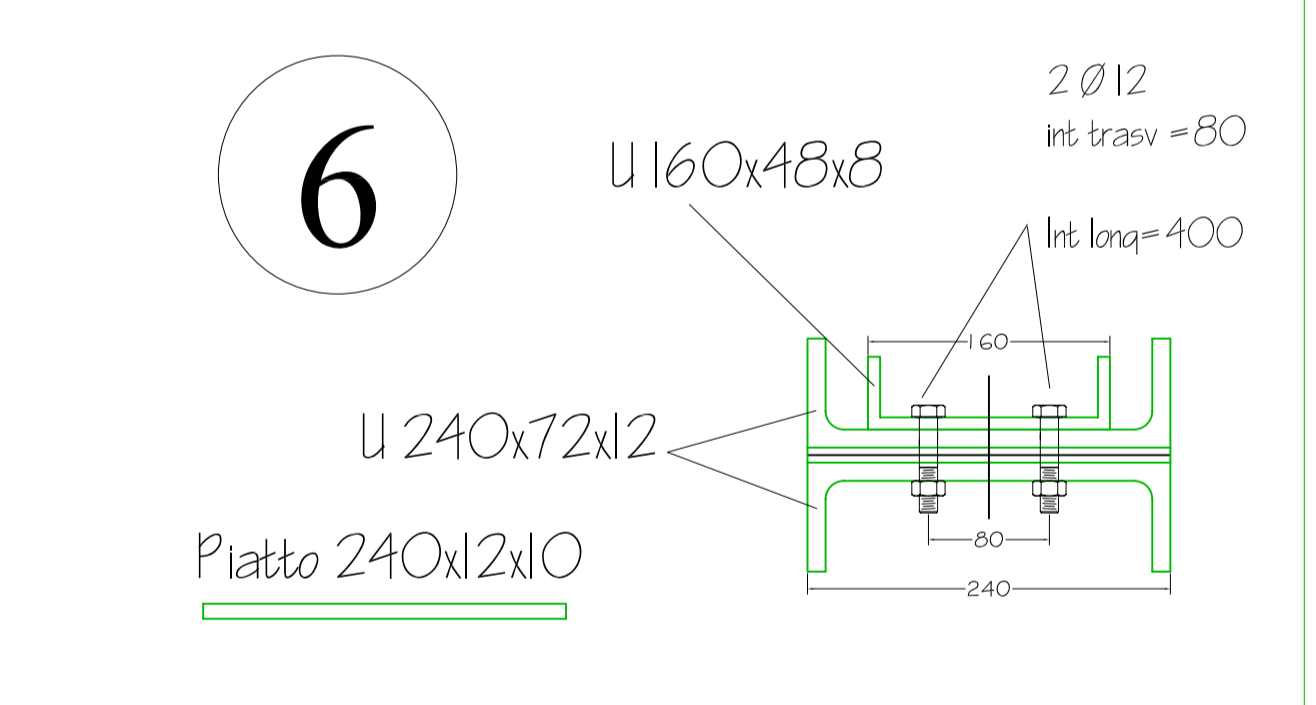
Scala 1:50



Scala 1:5

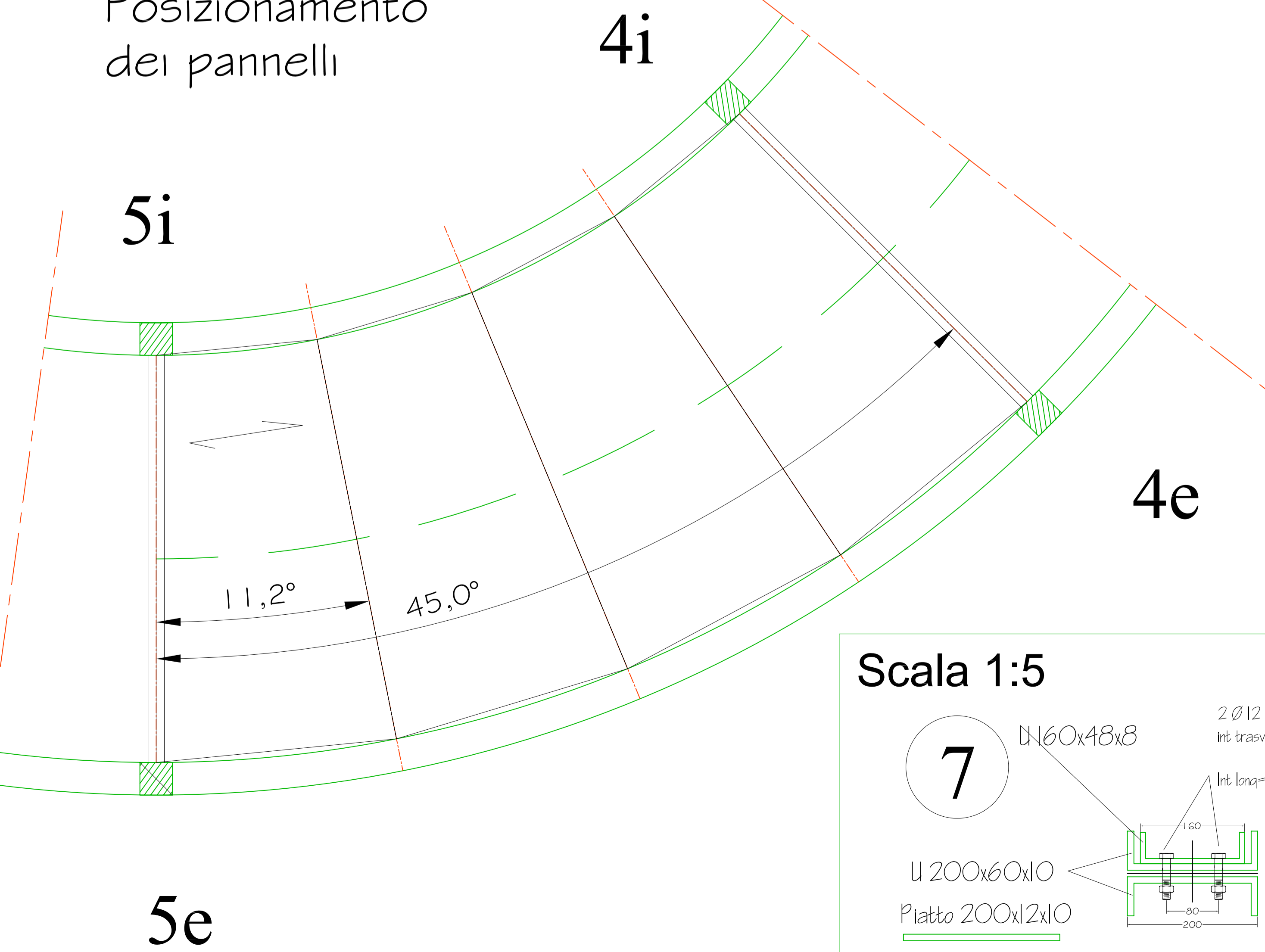


Scala 1:5

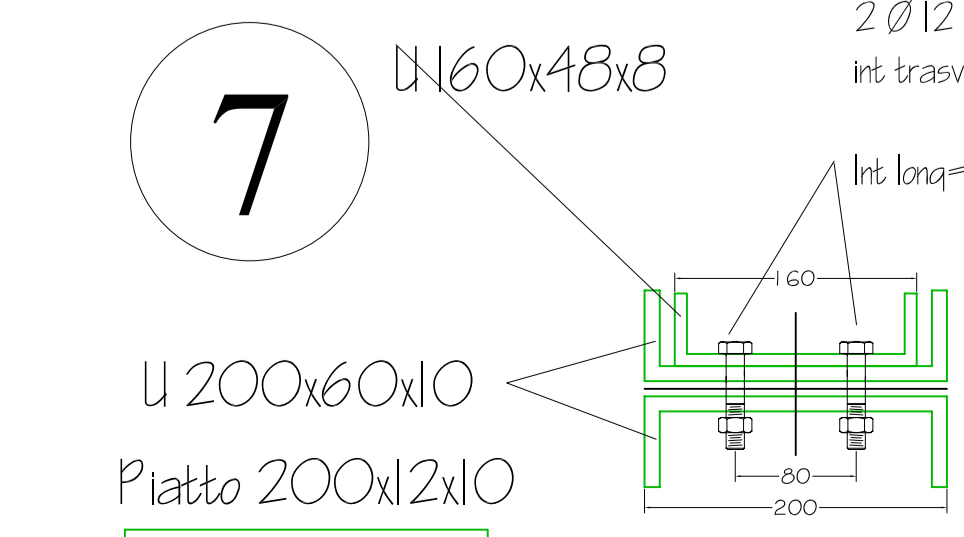


Scala 1:20

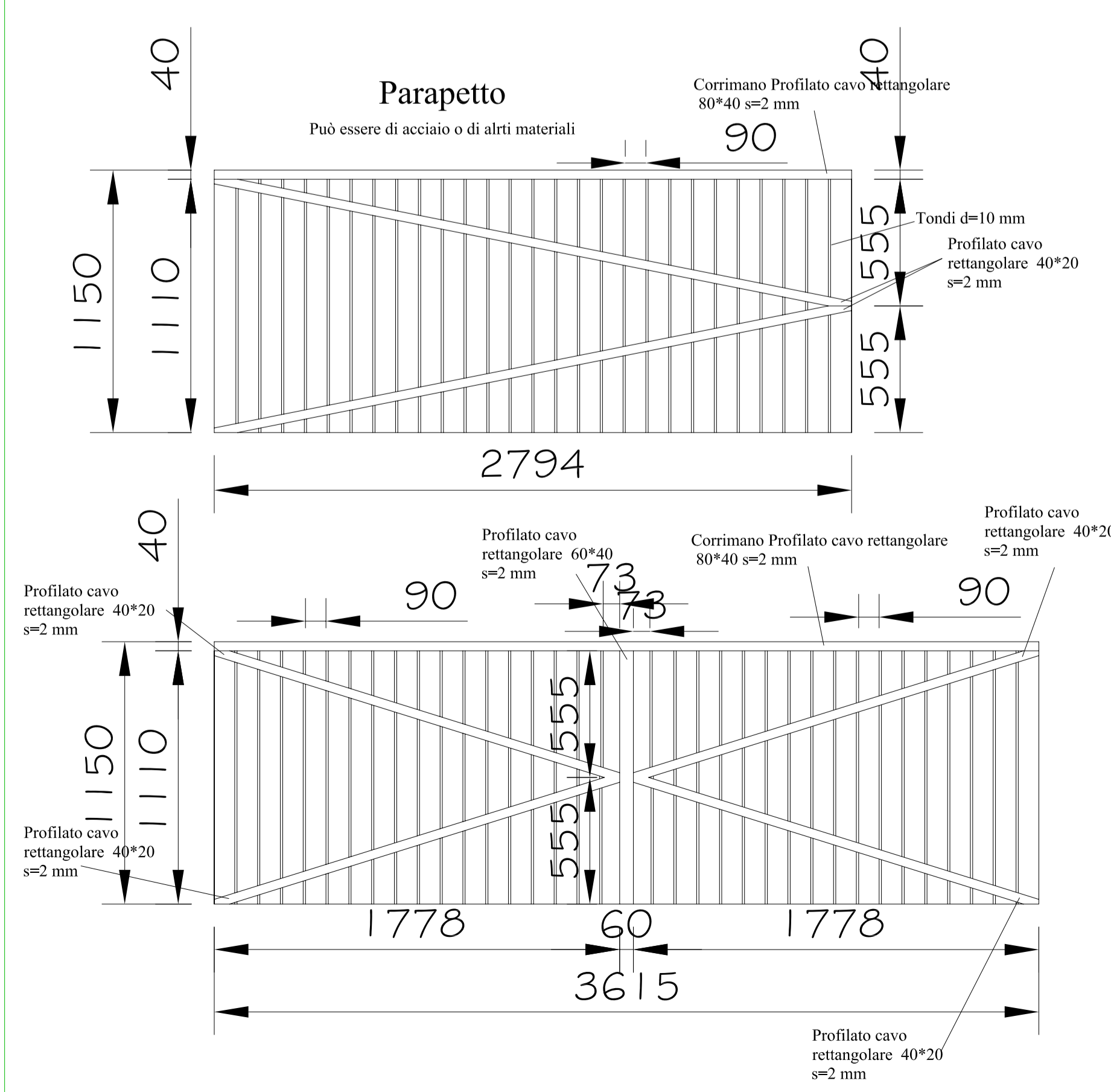
Posizionamento
dei pannelli



Scala 1:5



Scala 1:20



COMUNE DI PRATO
SETTORE "CC"
Mobilità, Ambiente e Grandi Infrastrutture

Oggetto
Eliminazione dell'incrocio di Via Cava con la Tangenziale e realizzazione di passerella ciclopeditone

Stato attuale e di progetto

Sezioni e Particolari

Progettisti: Ing. Lorenzo Frasconi
Ing. Alessandro Adilardi
Collaboratori: Geom. Antonio De Coltiis
Geom. Chiara Melani

TAV.
4
Scala: varie

DATA: Agosto 2007