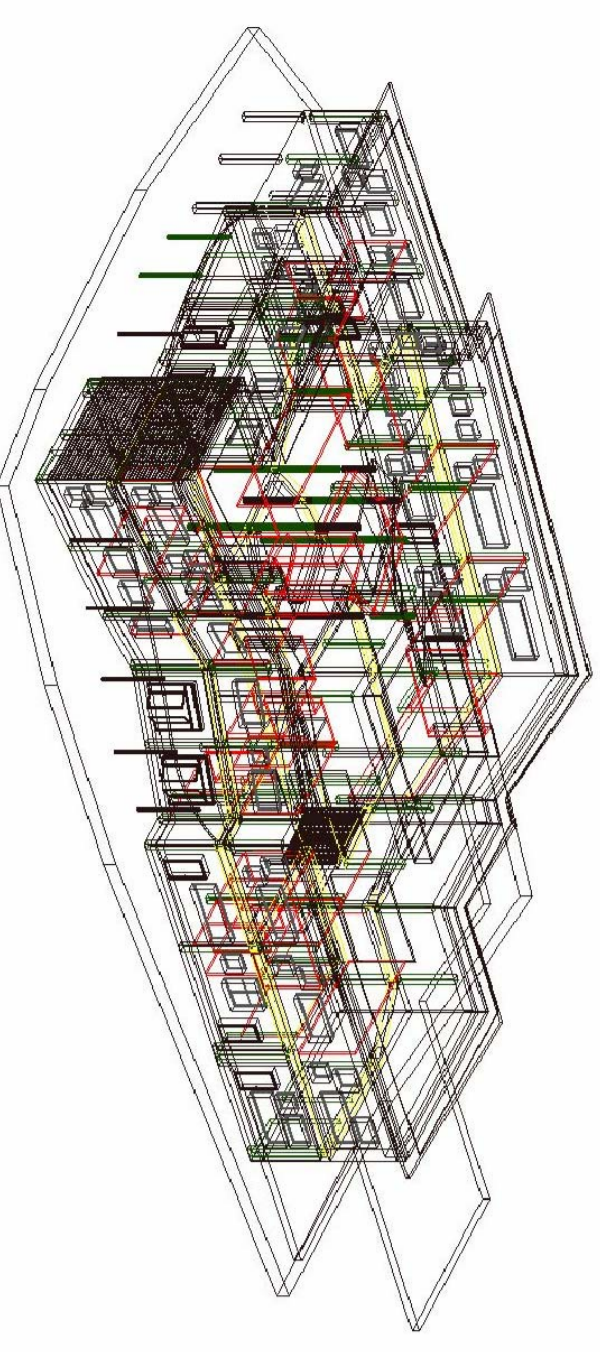


COMUNE DI PRATO
 COMPLESSO SCOLASTICO DI CAFAGGIO
 REALIZZAZIONE DI NUOVA SCUOLA ELEMENTARE PER 15 AULE
 PROGETTO ESECUTIVO 1° LOTTO

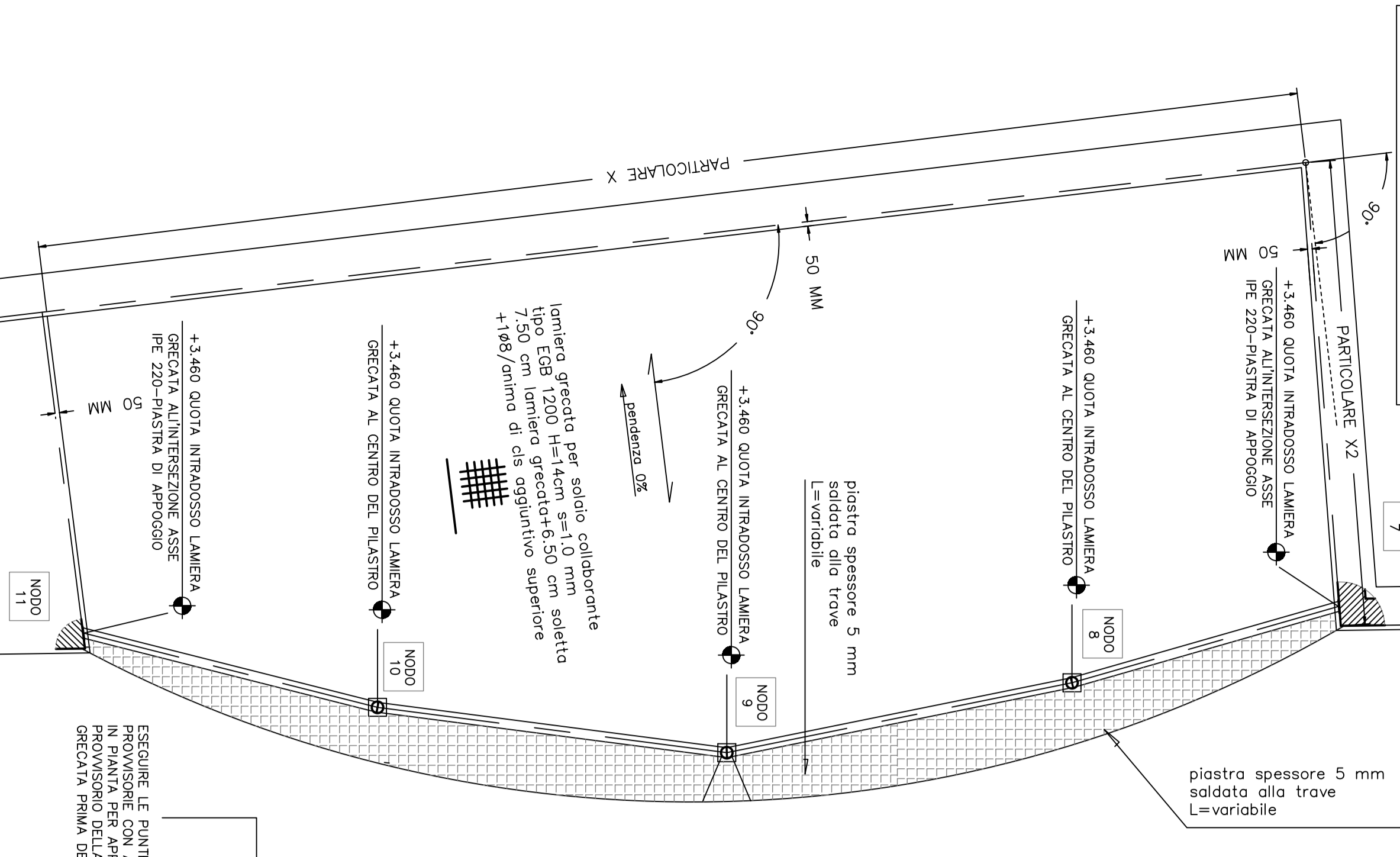


Assessore Lavori Pubblici
 Il Dirigente Servizio Edilizia Pubblica
 Progetto
 Progetto strutturale
 collaboratori

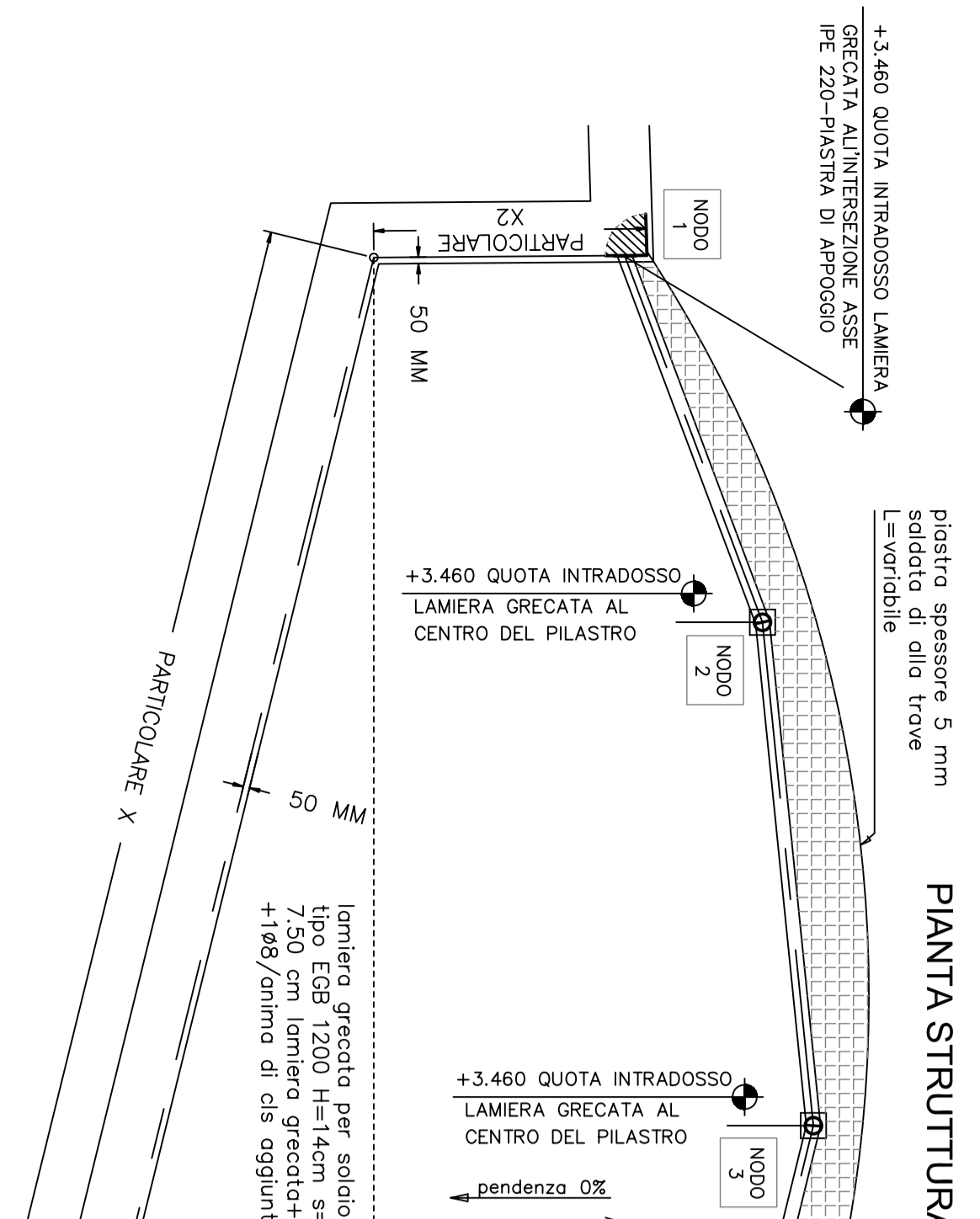
Ing. Paolo Barattini
 arch. Francesco Pirocoppo
 Ing. Claudio Corsioli
 Ing. Francesco Zini
 Ing. Daniela Gigliotti
 Ing. Roberto Manno
 Ing. Barbara Ortolini

Descrizione tavola **COPERTURA ESTERNA**
 Pianta strutturale
 Schema puntellazioni provvisorie lamiera grecata
 Particolare tipo nodi e particolari nodi 2-3-4-5-6-8-9-10
 Scala **S28**
 1:25
 1:100
 Gennaio 2007

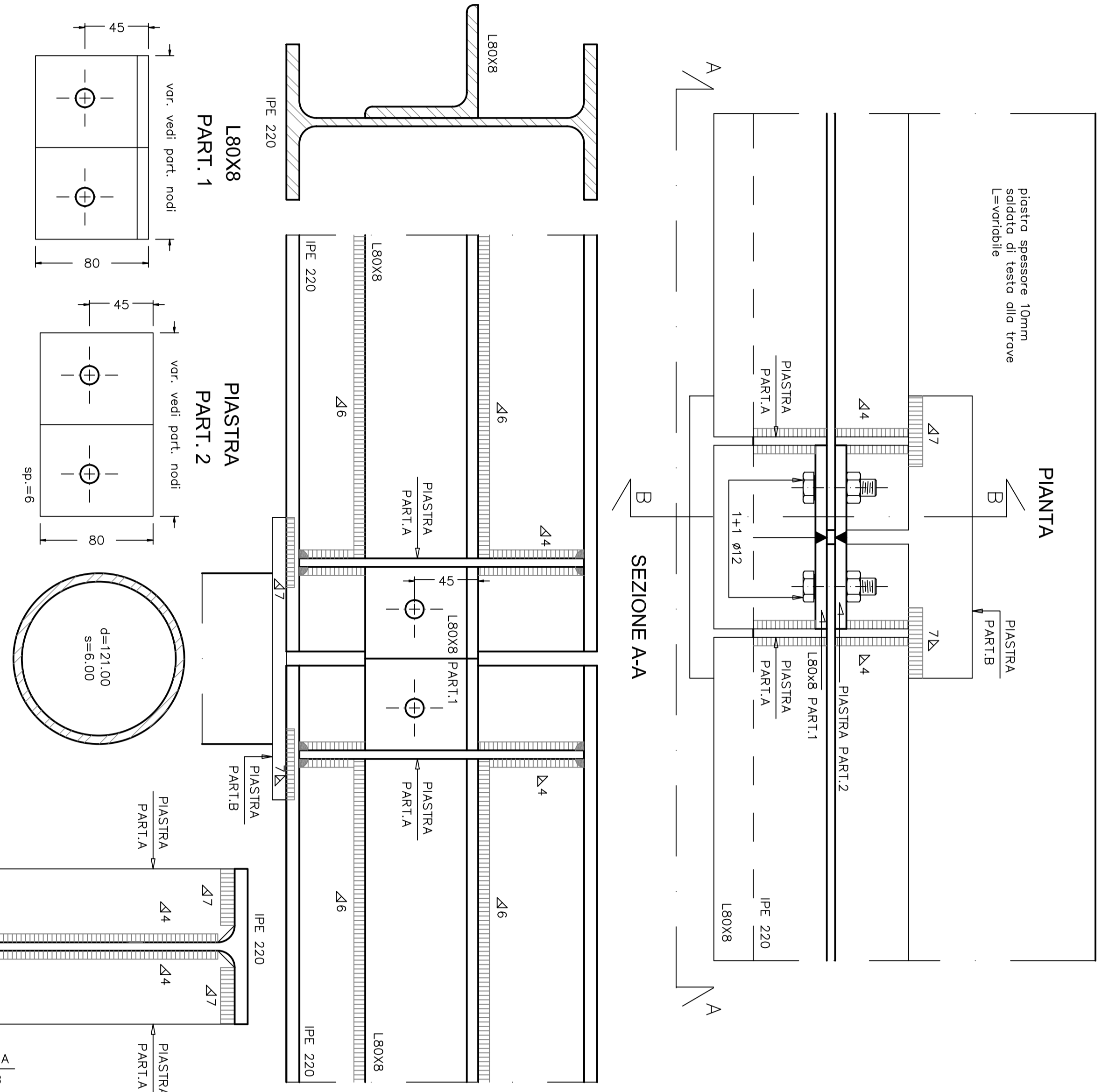
COPERTURA ZONA 1 Pianta strutturale-scala 1:50



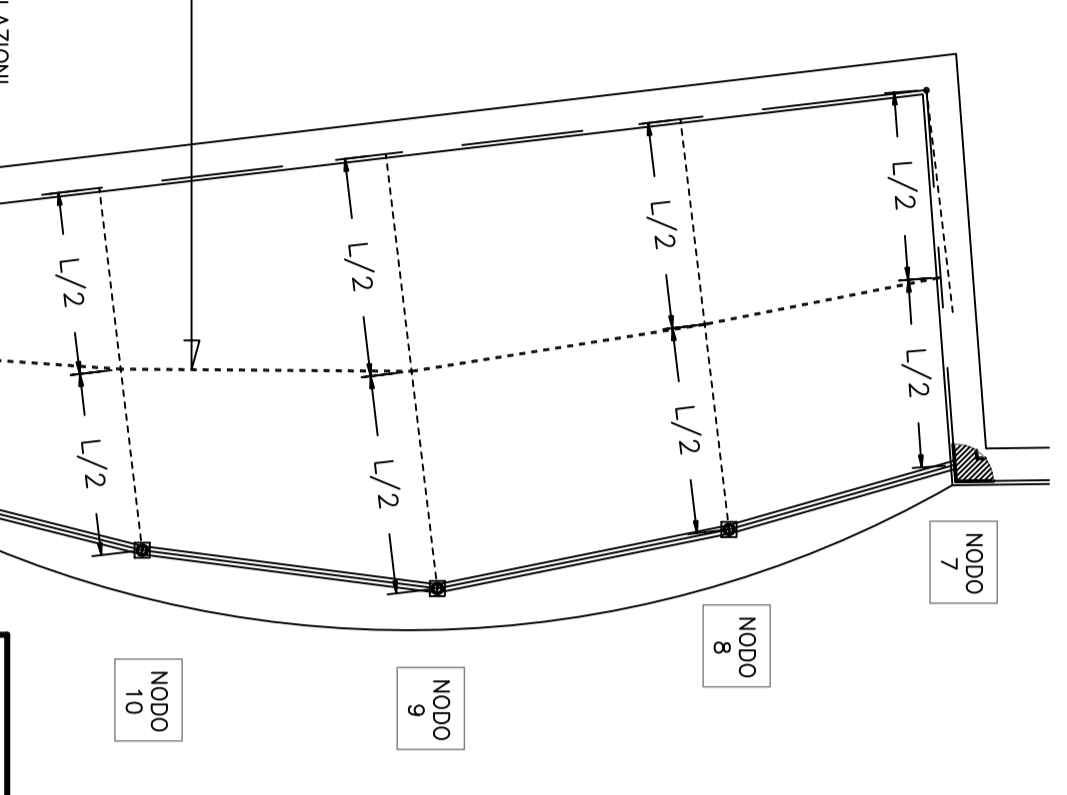
COPERTURA ZONA 2 Pianta strutturale-scala 1:50



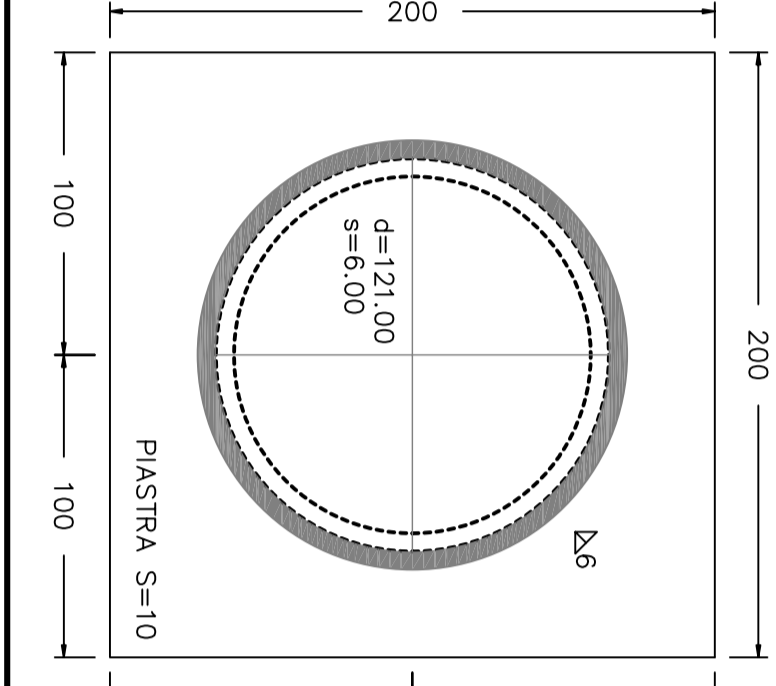
PARTICOLARE tipo NODI 2-3-4-5-6-8-9-10-scala 1:2.50



SCHEMA PUNTELLAZIONI-scala 1:100



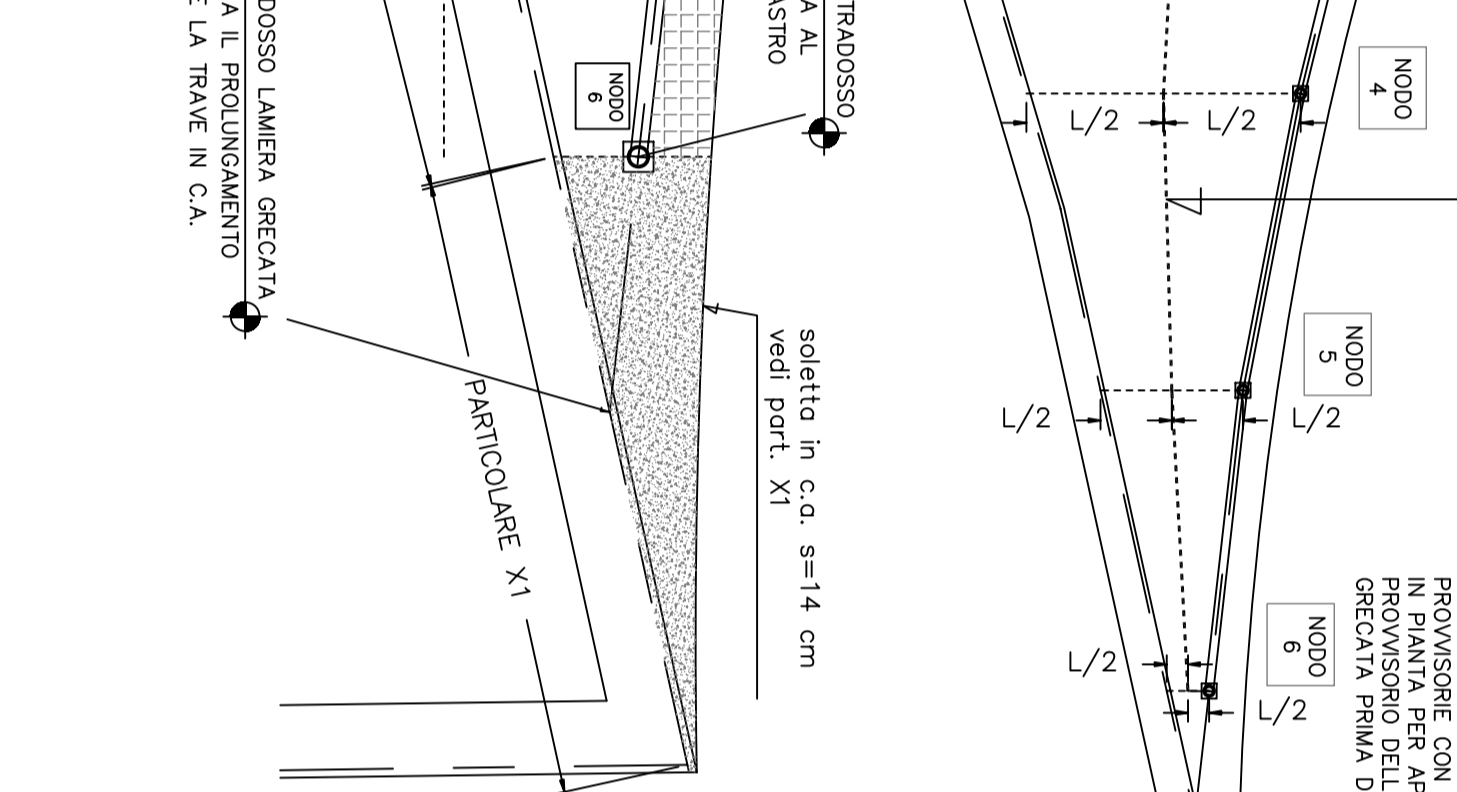
PARTICOLARE B lato tubolare



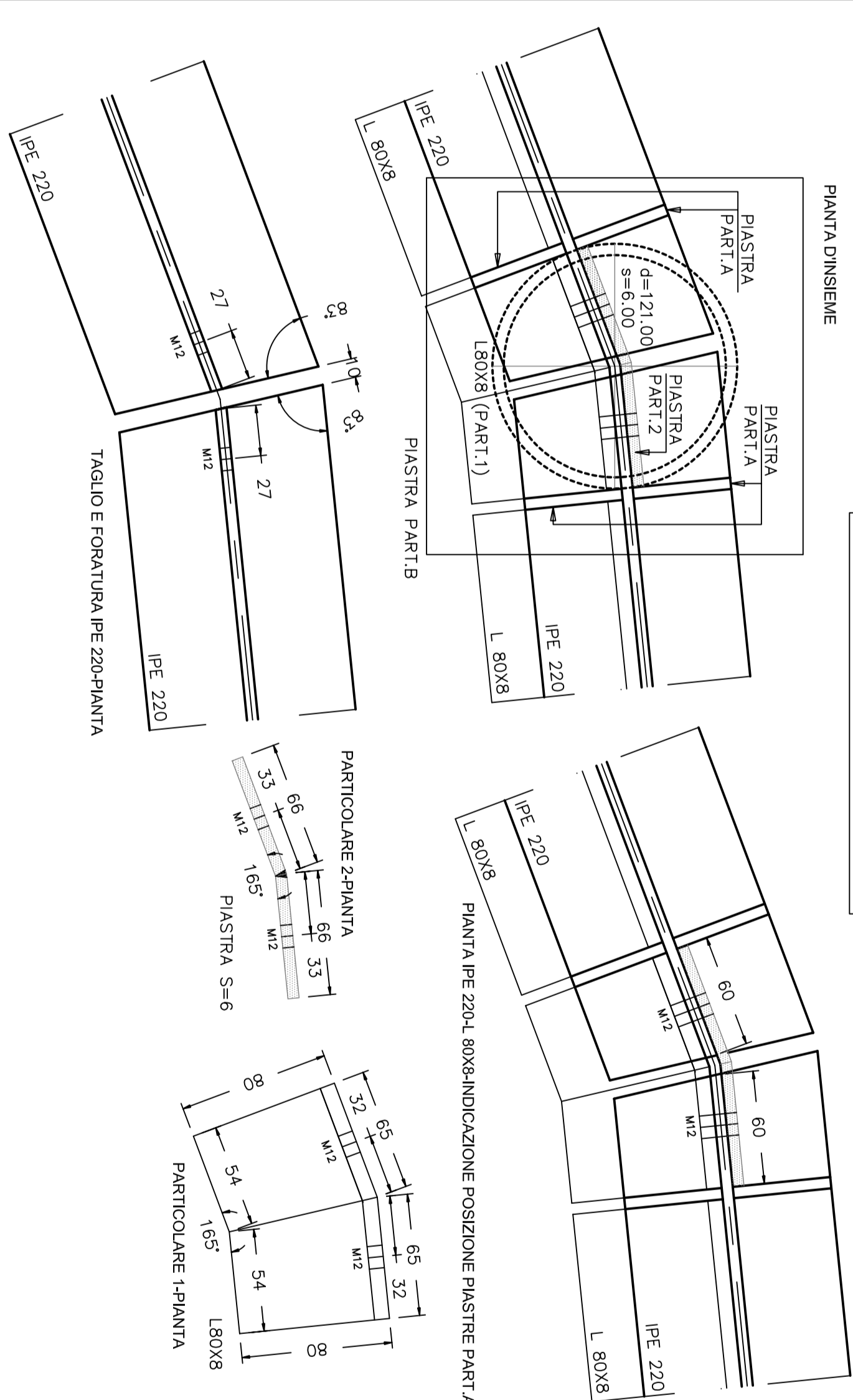
PARTICOLARE A



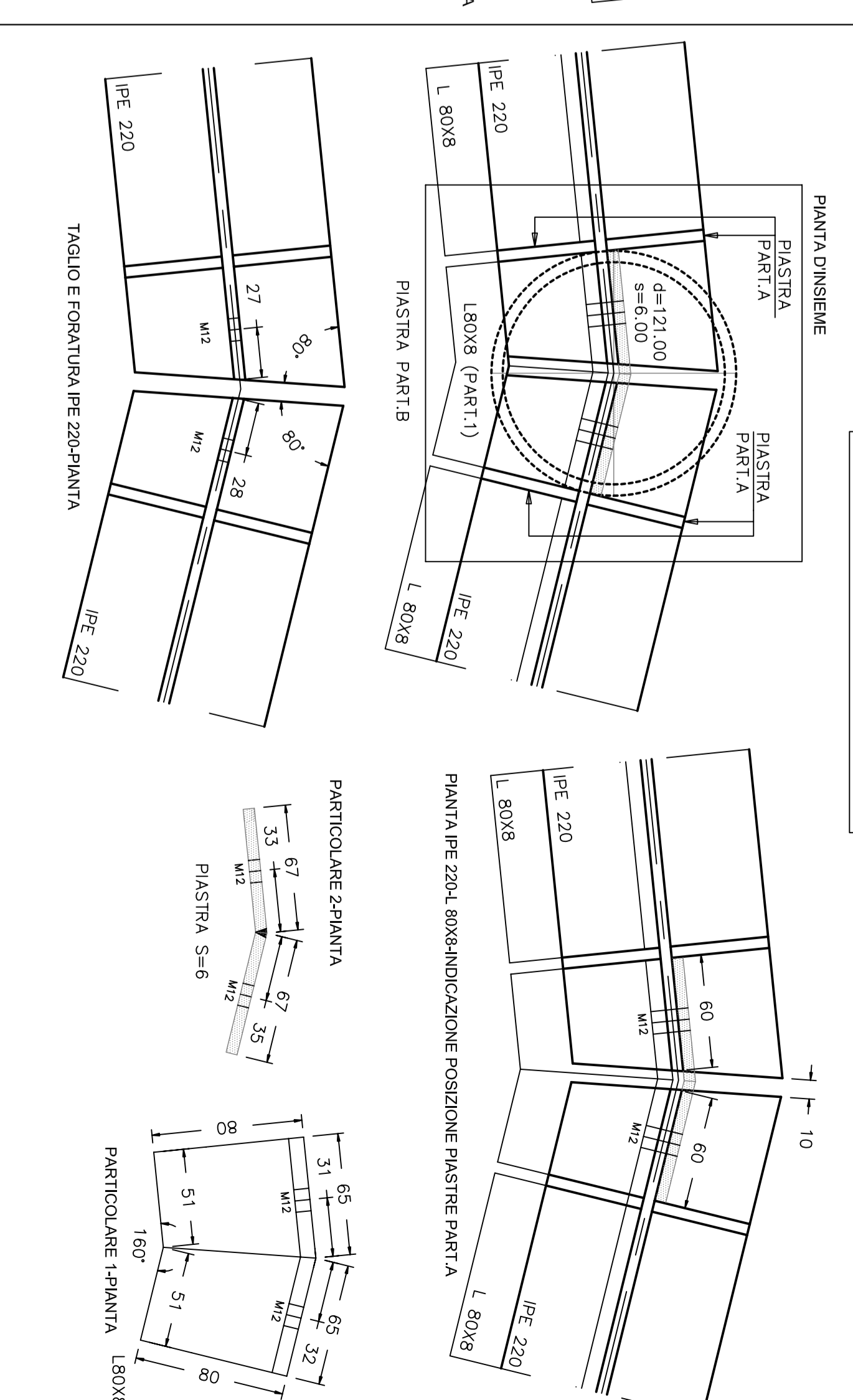
SCHEMA PUNTELLAZIONI-scala 1:100



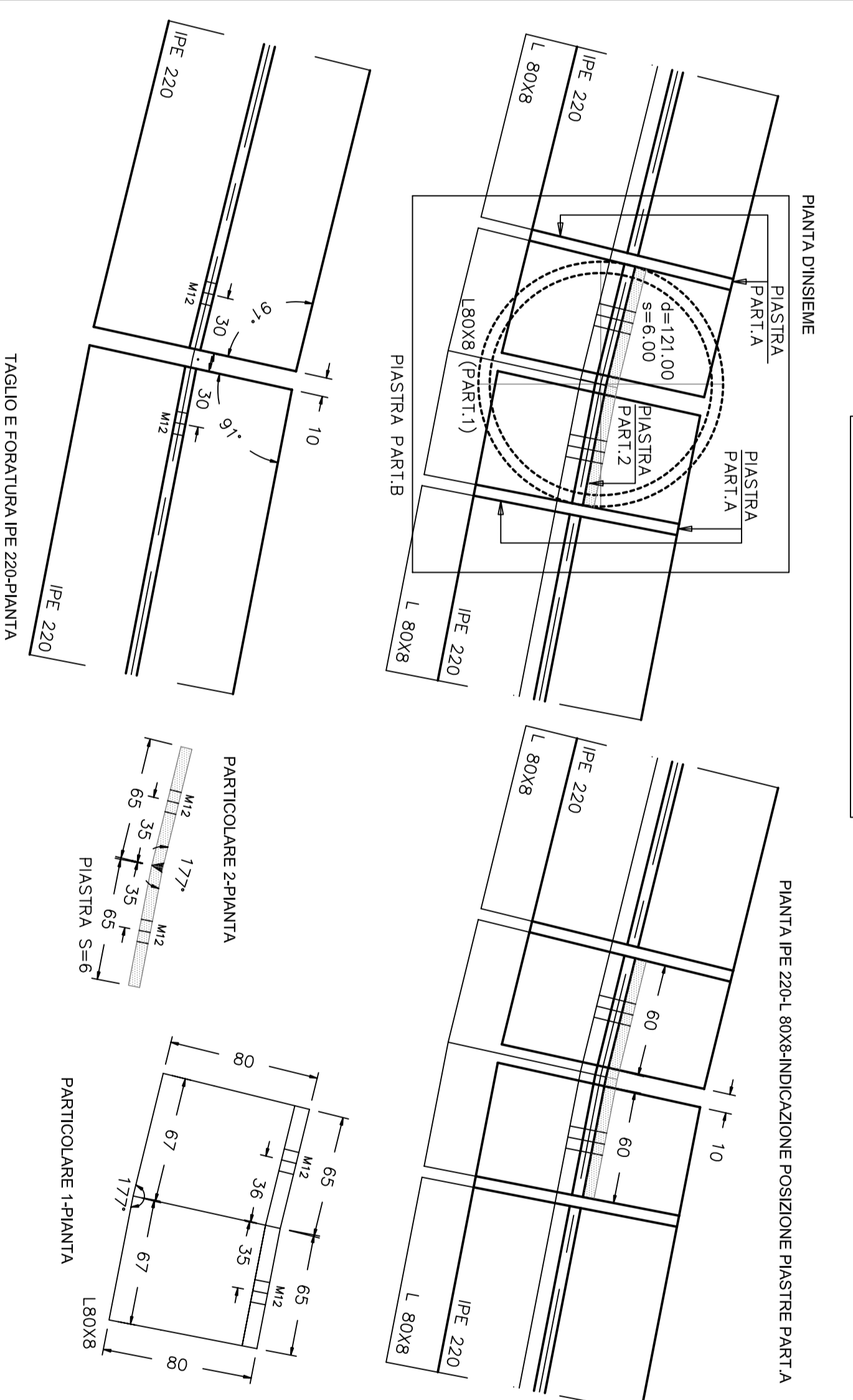
NODO 2-scala 1:2.50



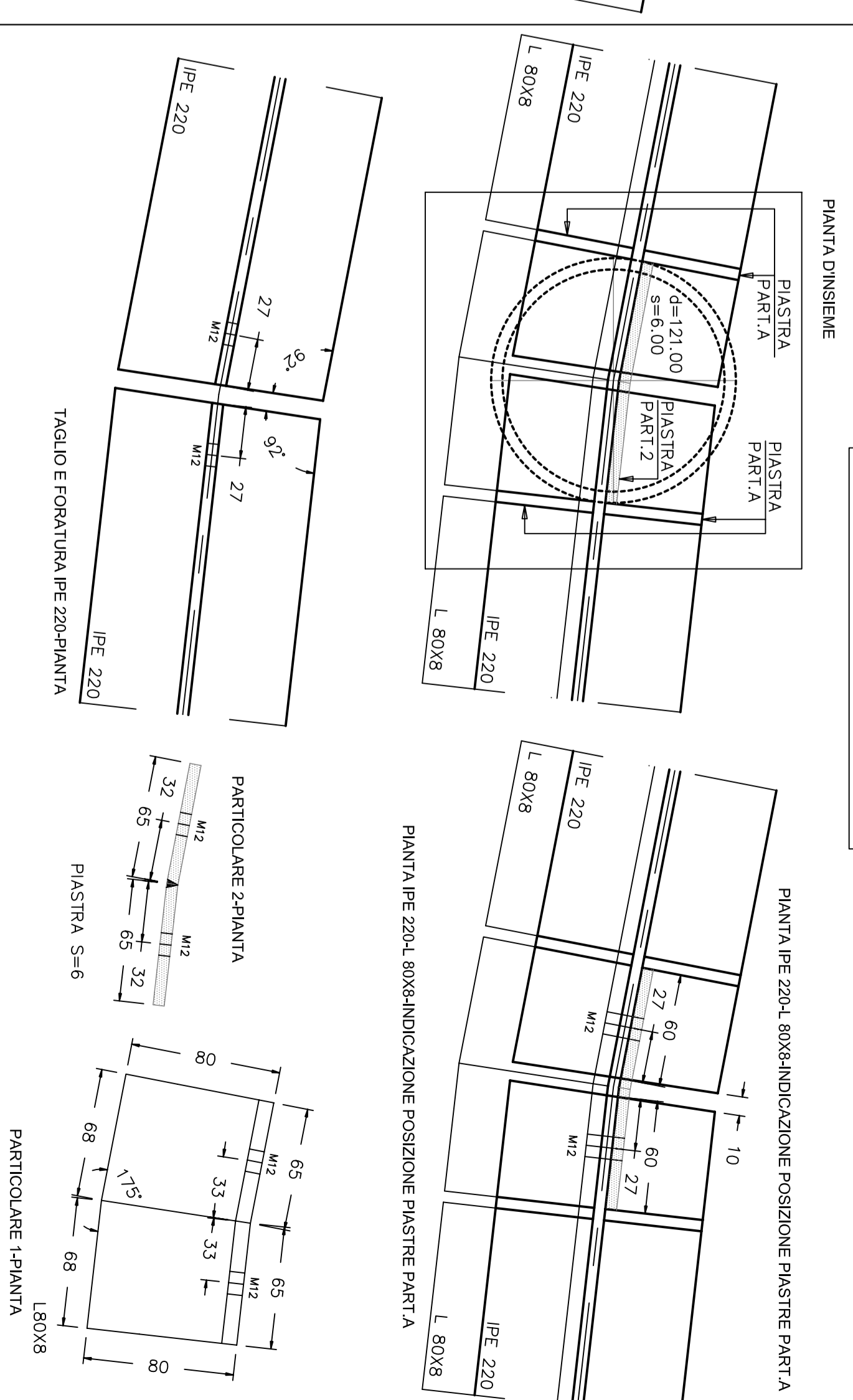
NODO 3-scala 1:2.50



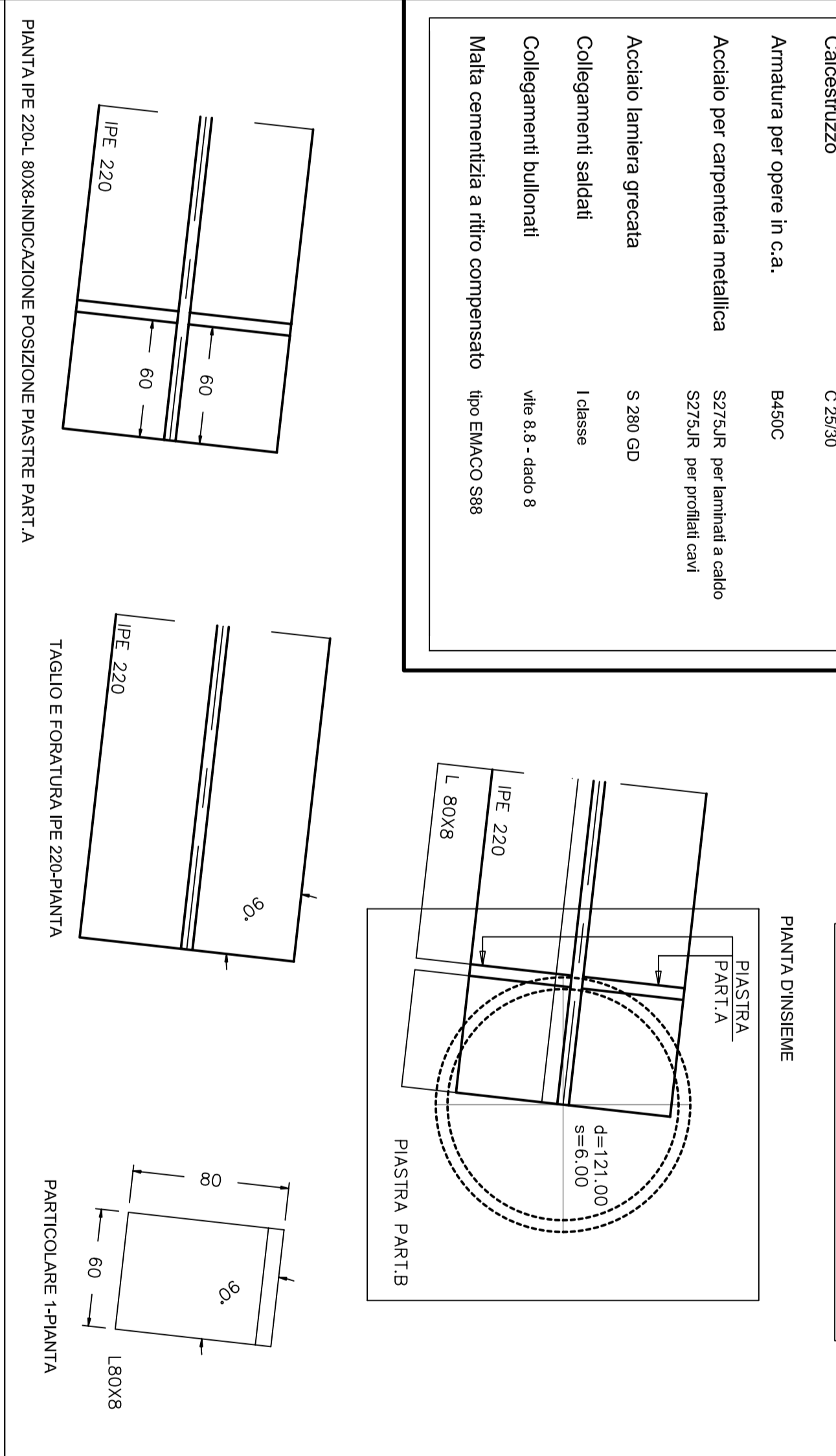
NODO 4-scala 1:2.50



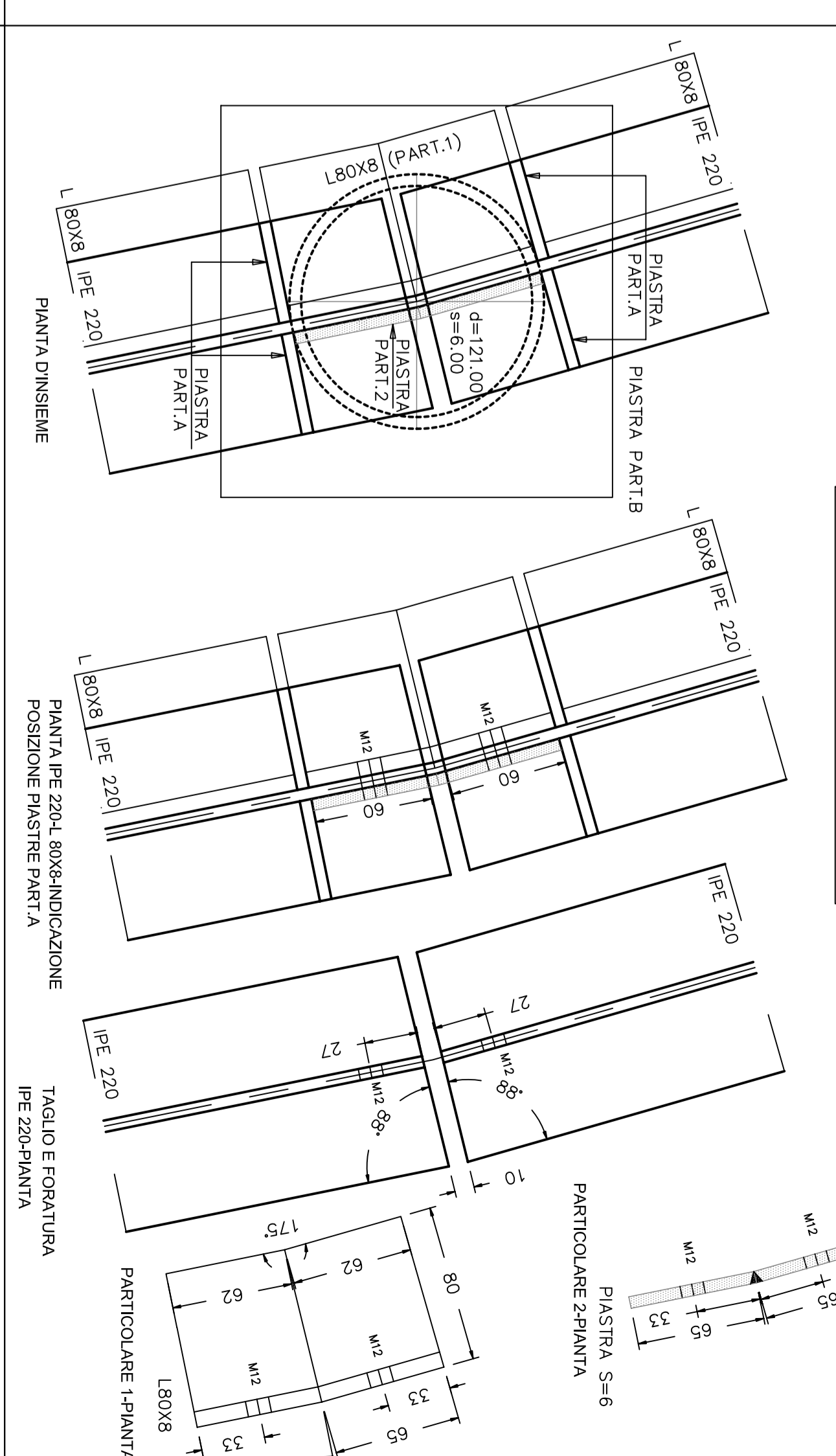
NODO 5-scala 1:2.50



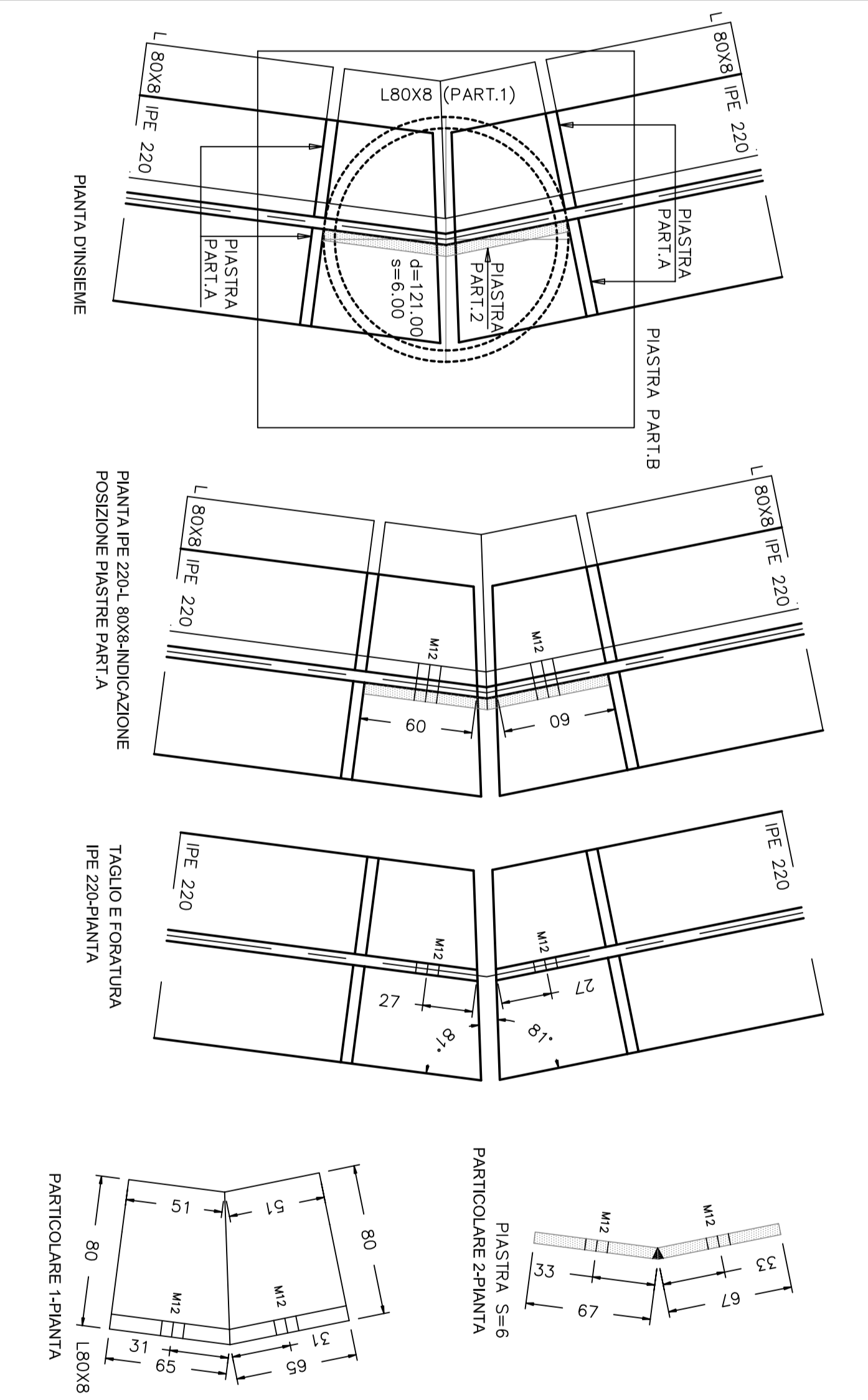
NODO 6-scala 1:2.50



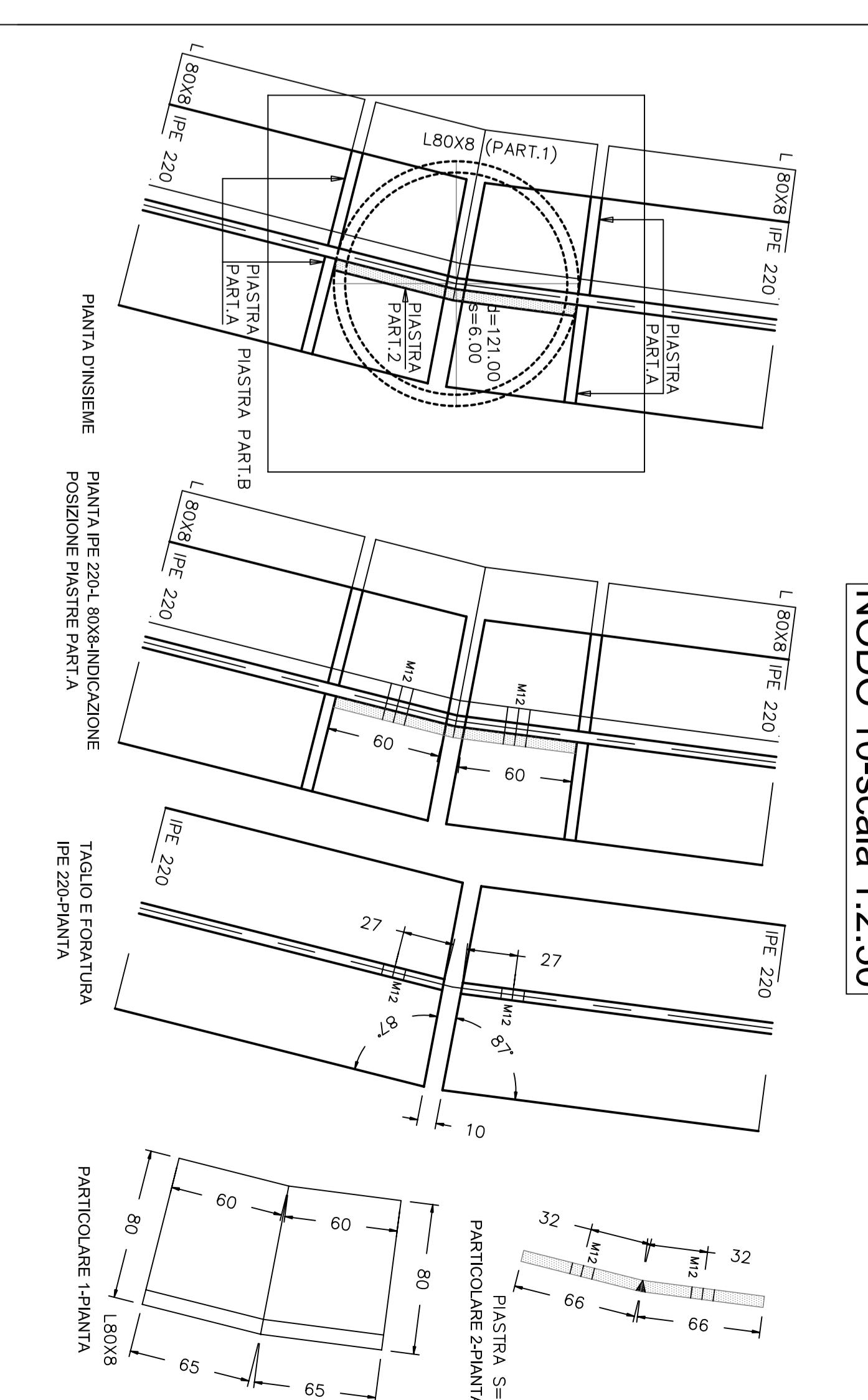
NODO 8-scala 1:2.50



NODO 9-scala 1:2.50



NODO 10-scala 1:2.50



Caratteristiche materiali:

Calistruzzo	C 20/30
Armatura per opere in c.a.	B40C
Acciaio per carpenteria metallica	S275JR per lamina a caldo S275JR per profile con collageamenti saldati
Acciaio lamina grecata	S 280 GD
Collageamenti saldati	Idonei
Molle cementizia a ritiro compensato	tipo SDMCO 388

W4e S.A. - classe B