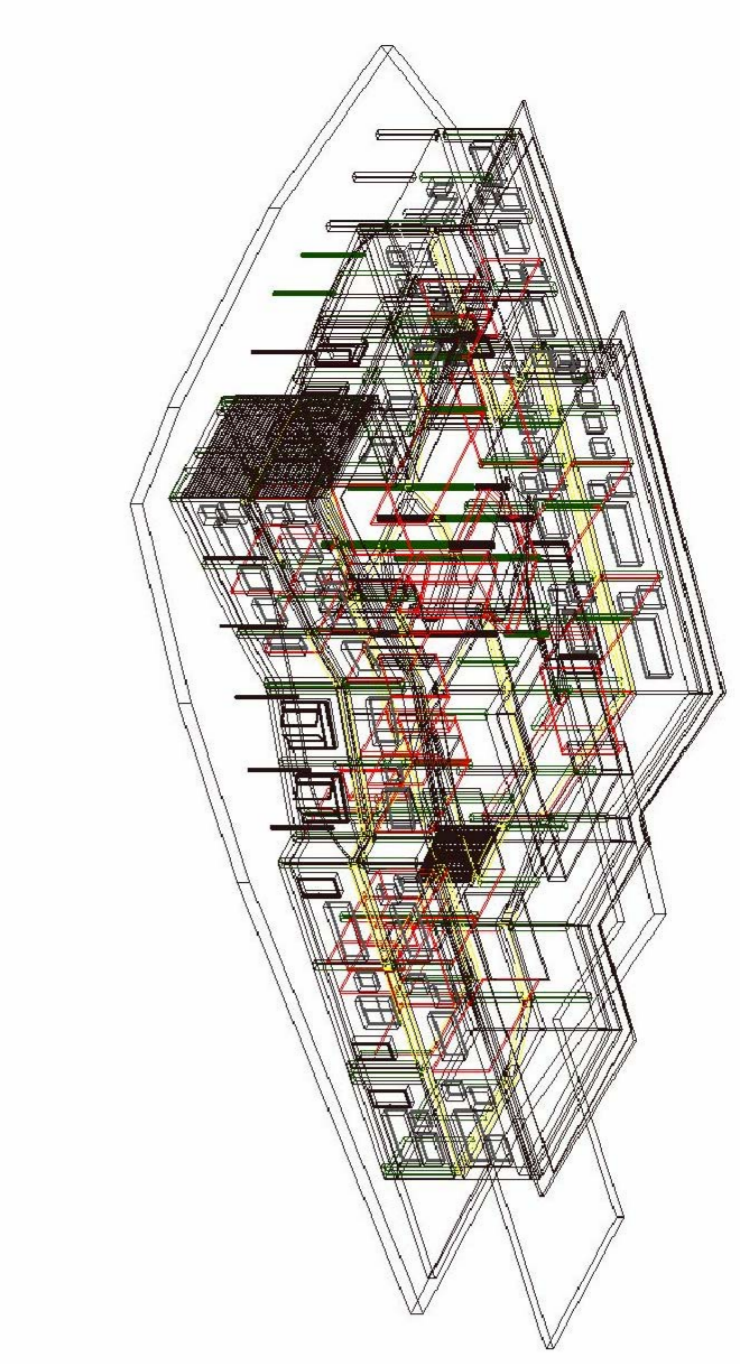


**COMUNE DI PRATO**  
**COMPLESSO SCOLASTICO DI CARAGGIO**  
**REALIZZAZIONE DI NUOVA SCUOLA ELEMENTARE PER 15 AULE**  
**PROGETTO ESECUTIVO 1° LOTTO**



Assessore Lavori Pubblici  
 Il Dirigente Servizio Edilizia Pubblica  
**Progetto**  
 Progettista strutturale  
 collaboratori

Ing. Enrico Giardi  
 Ing. Paolo Barilanti  
 arch. Francesco Procopio  
 arch. Claudio Corsori

Ing. Daniele Bigazzi  
 Ing. Francesco Biondi  
 Ing. Matteo Villo  
 Ing. Barbara Orlandi

DATA

MATERIALI

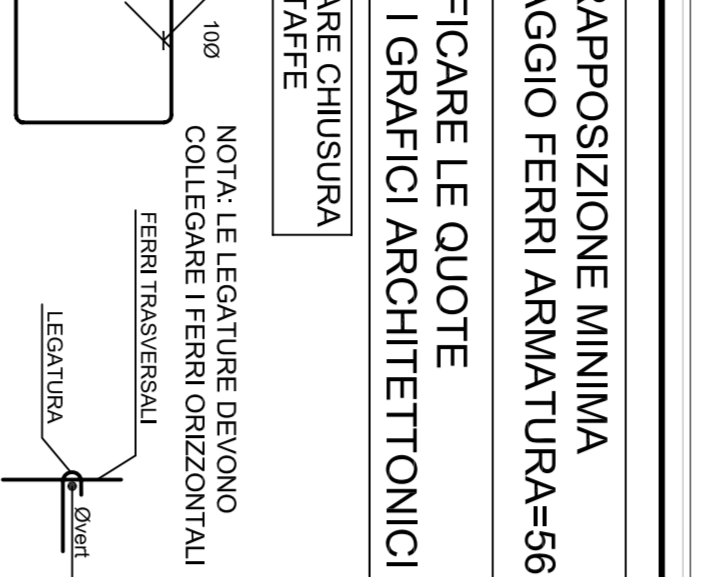
CALCESTRUZZO	C25 / f30
ACCIAIO PER C.A.	BR50C
Caratteristiche Caratteristiche	N.B. SOVRAPPORZIONE MINIMA E ANCORAGGIO FERRI ARMATURA=560
Caratteristiche C25/30	N.B. VERIFICARE LE QUOTE CON I GRAFICI ARCHITETTONICI
Classe di resistenza	CP1
Classe di deformazione	54
Classe di deformazione	1.1m
Classe di deformazione	3.1m

Descrizione tavola **PARETI IN C.A.**  
**ARMATURA PARETI DA N°1 A N°9**

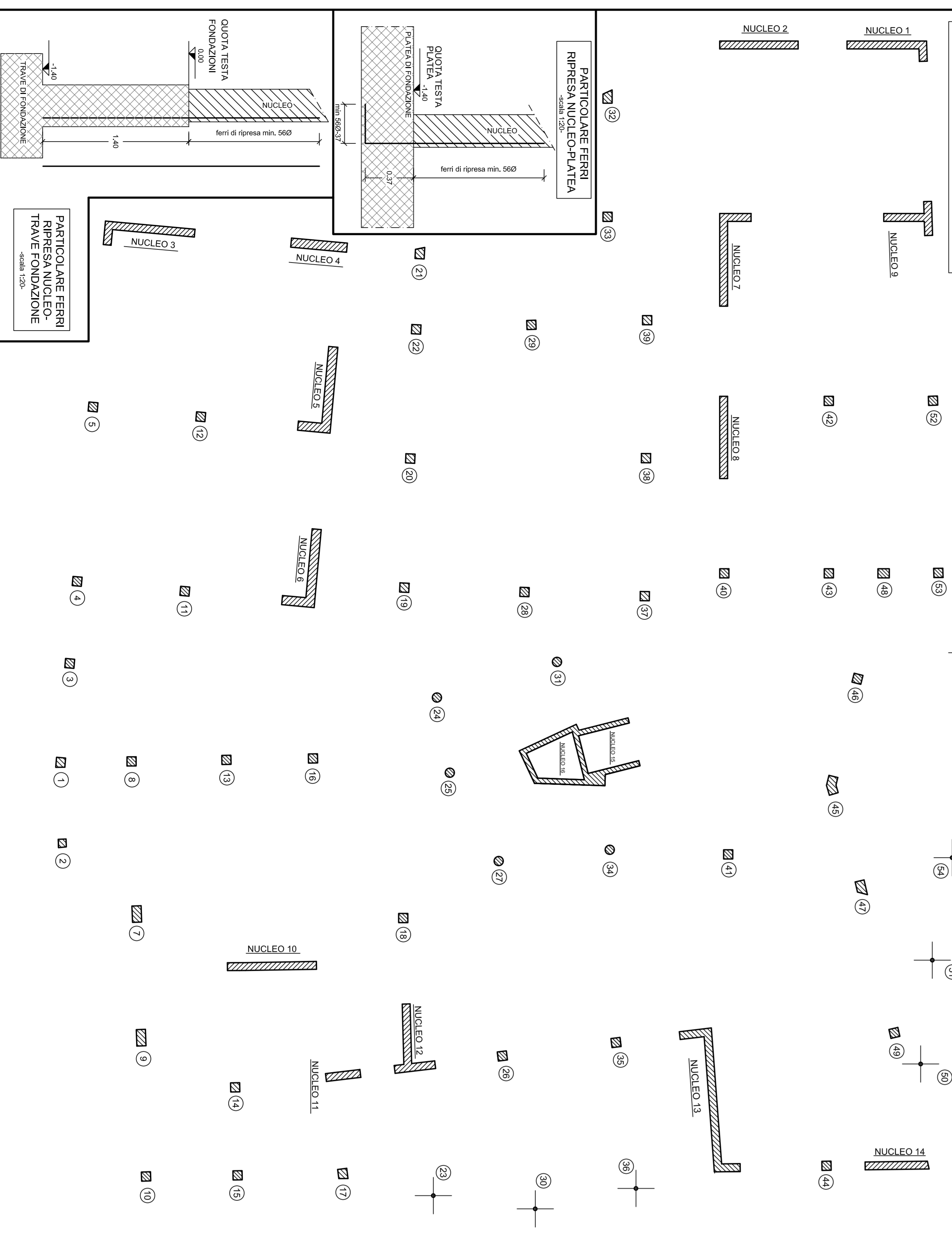
Scala  
 1/20  
 1/100

**S20**

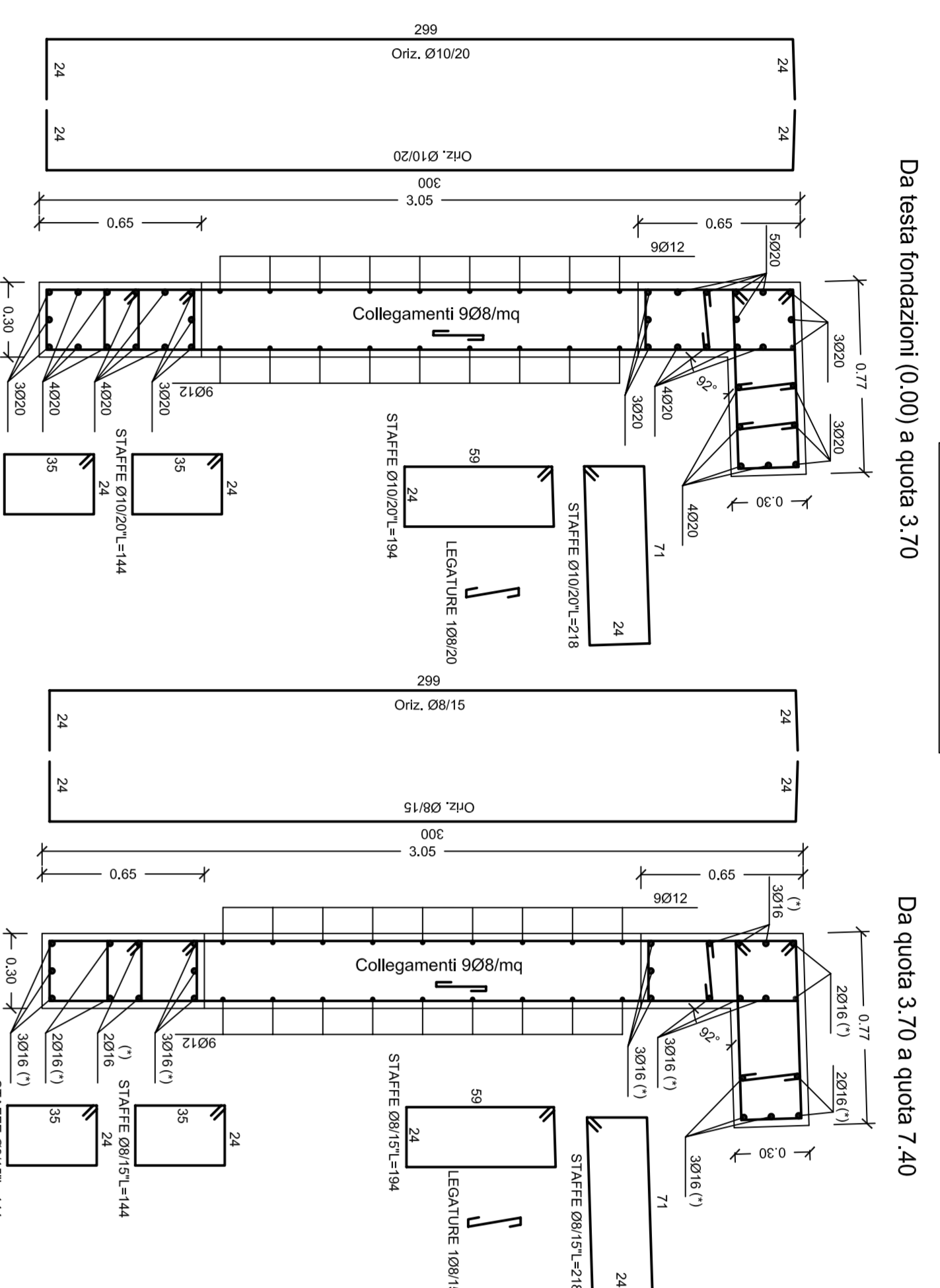
Gennaio 2007



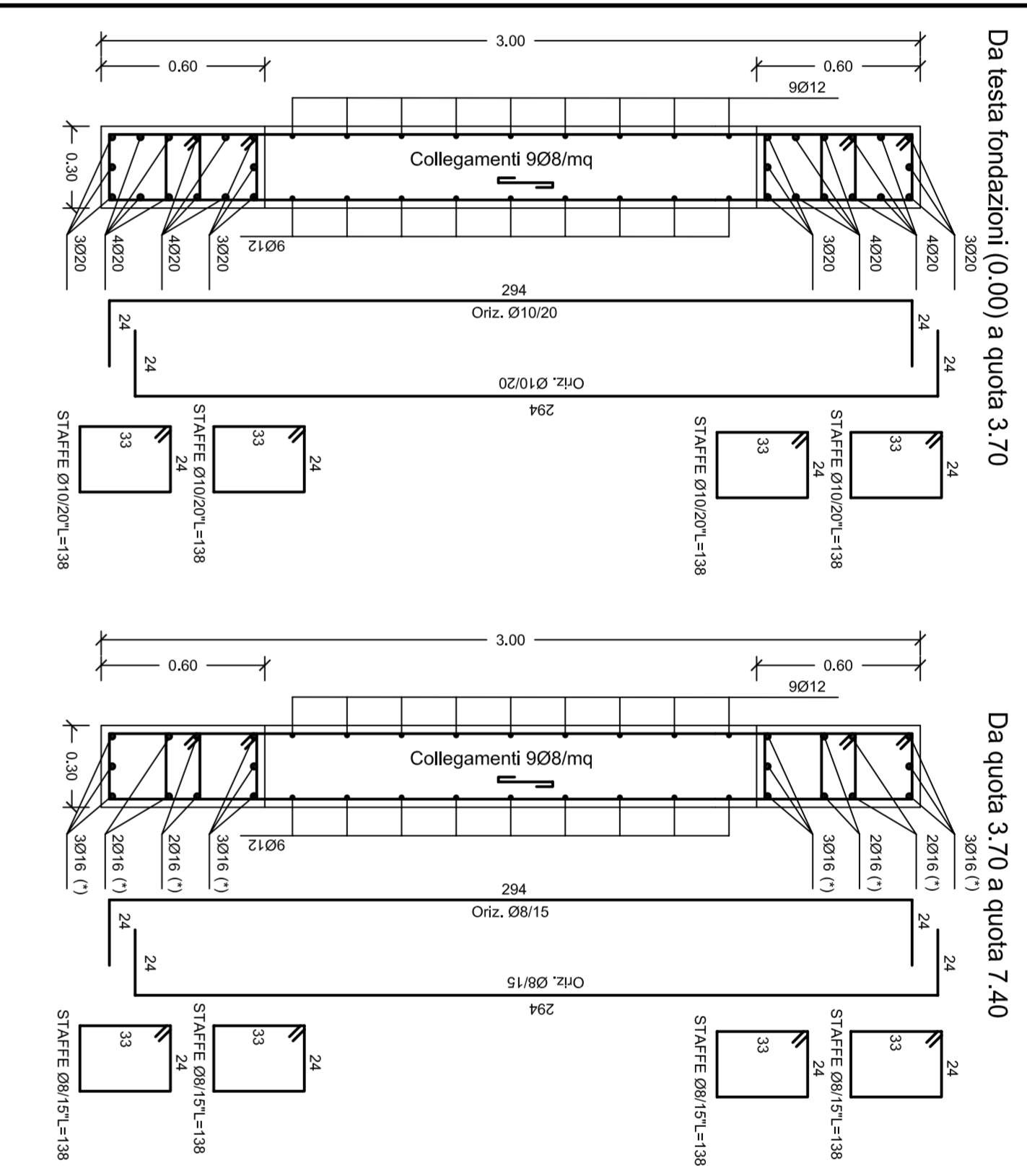
**NUMERAZIONE PARETI E NUCLEI 1:100**  
**PIANO FONDAZIONE**



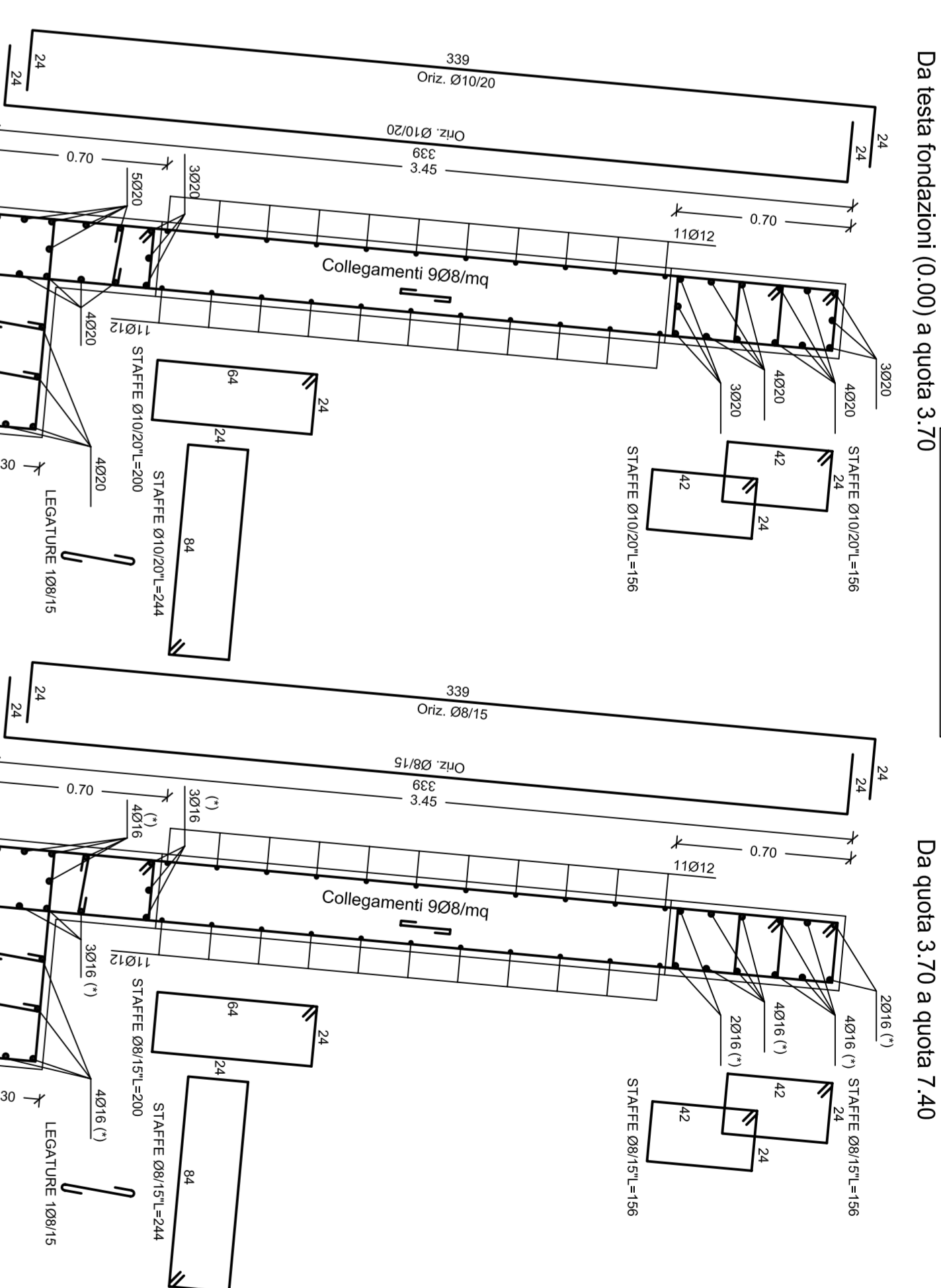
**NUCLEO 1-scala 1:20**



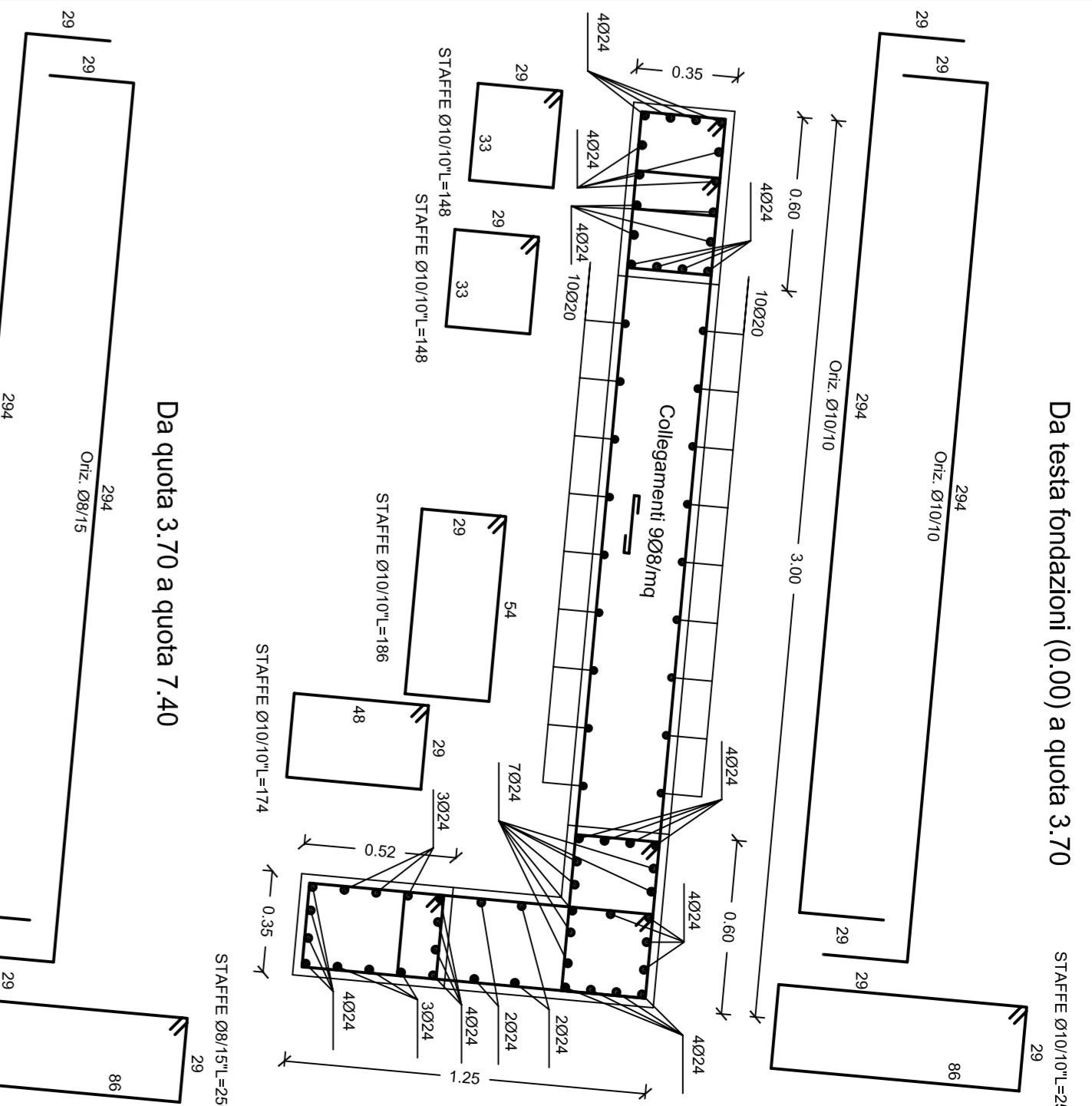
**NUCLEO 2-scala 1:20**



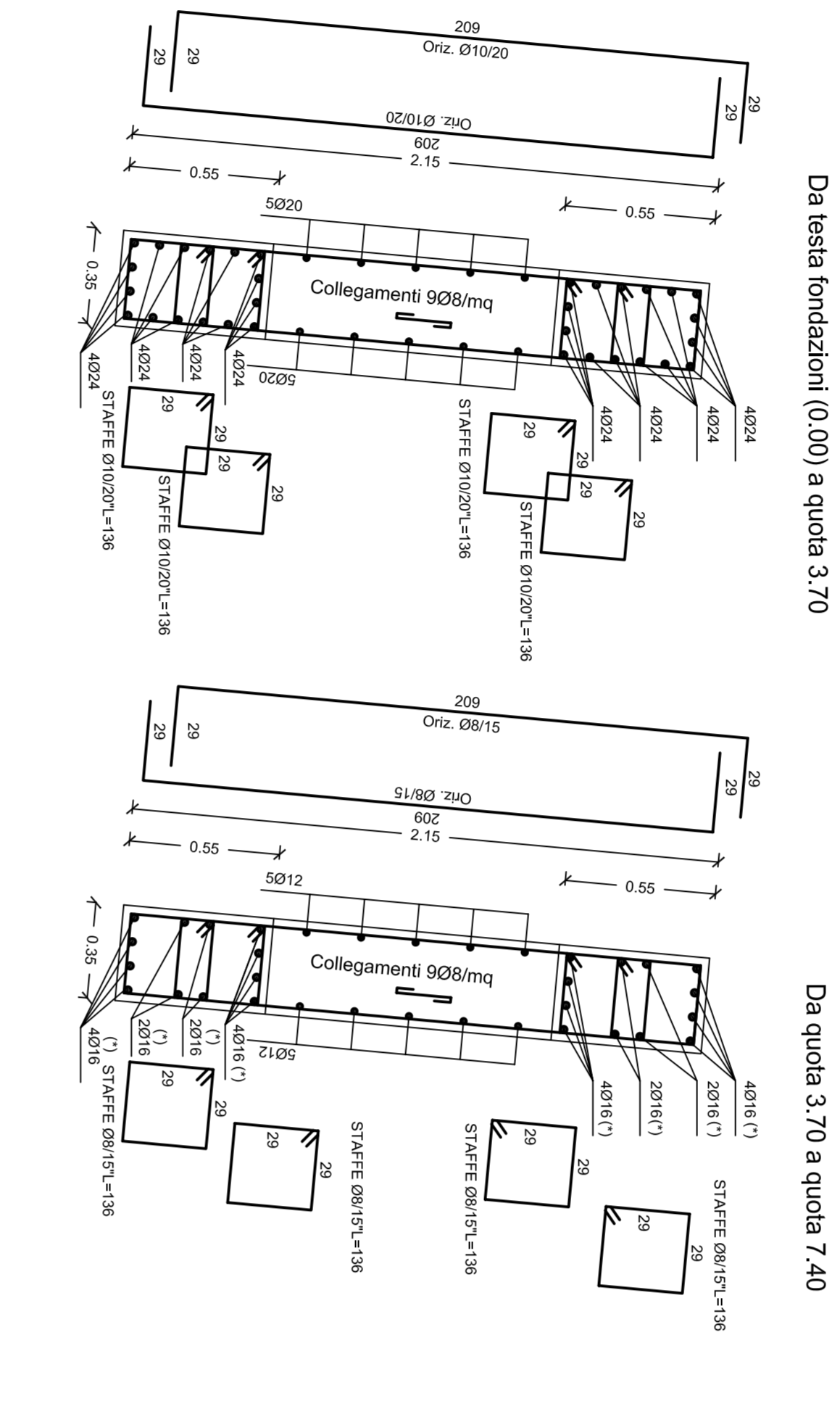
**NUCLEO 3-scala 1:20**



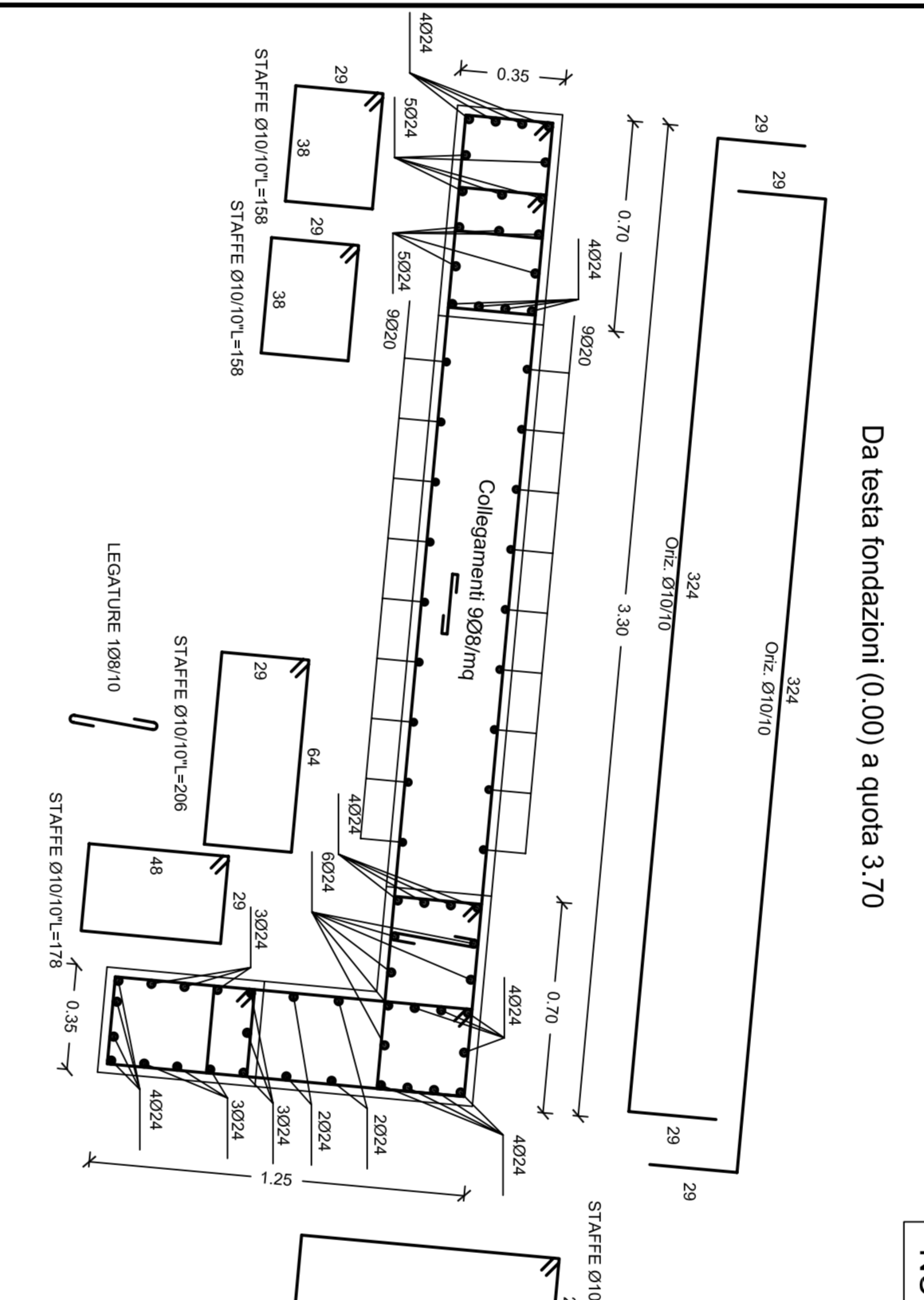
**NUCLEO 6-scala 1:20**



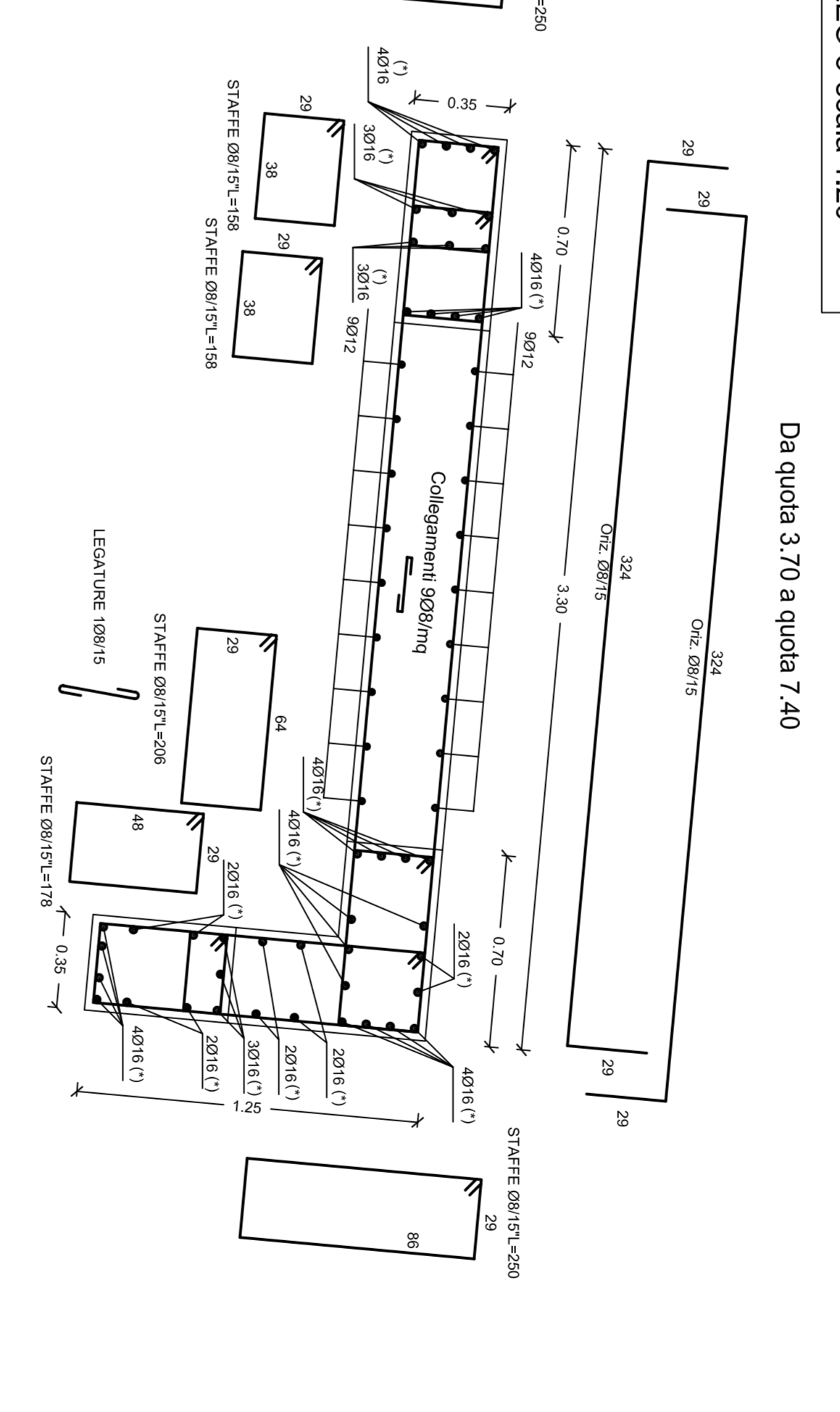
**NUCLEO 4-scala 1:20**



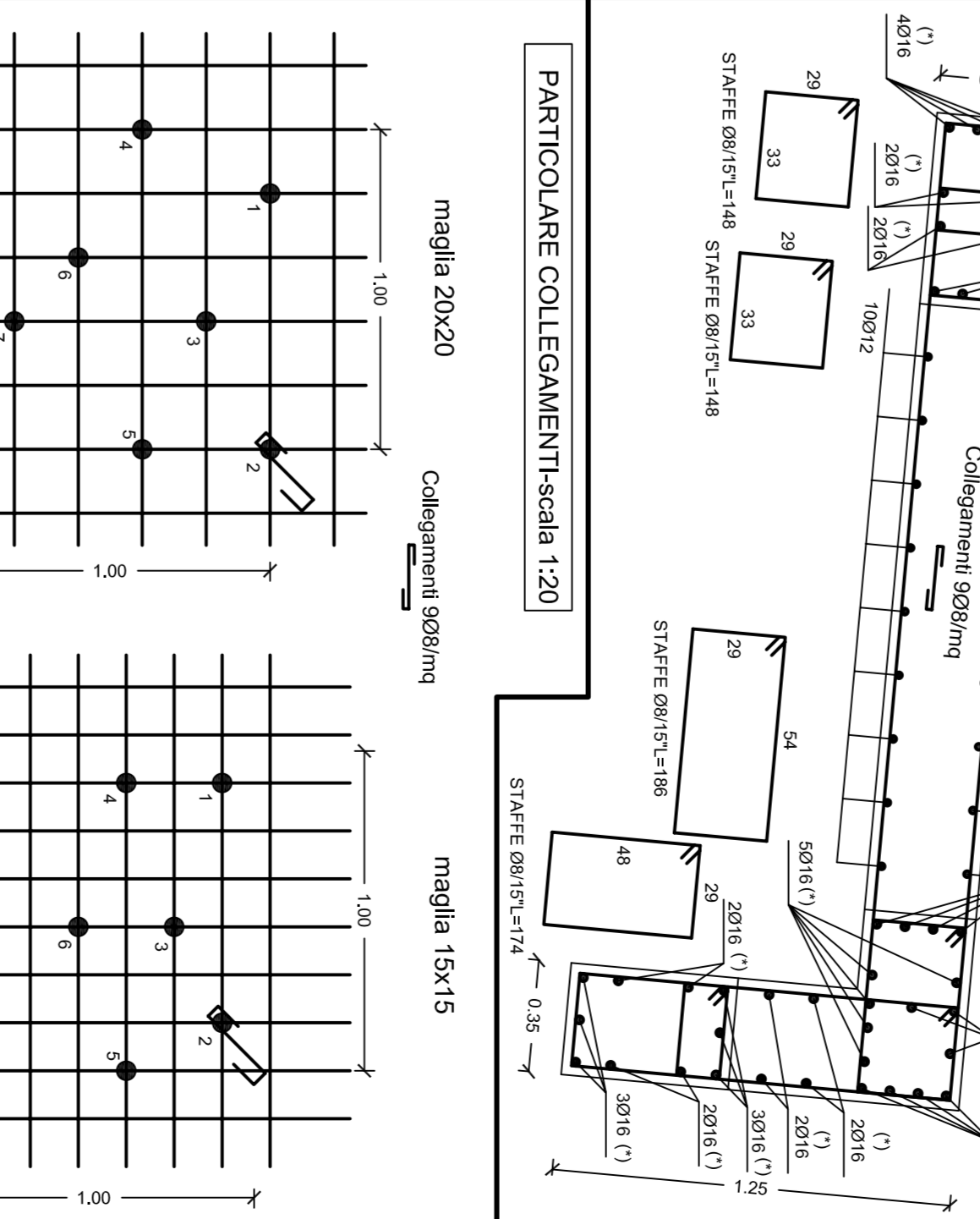
**NUCLEO 5-scala 1:20**



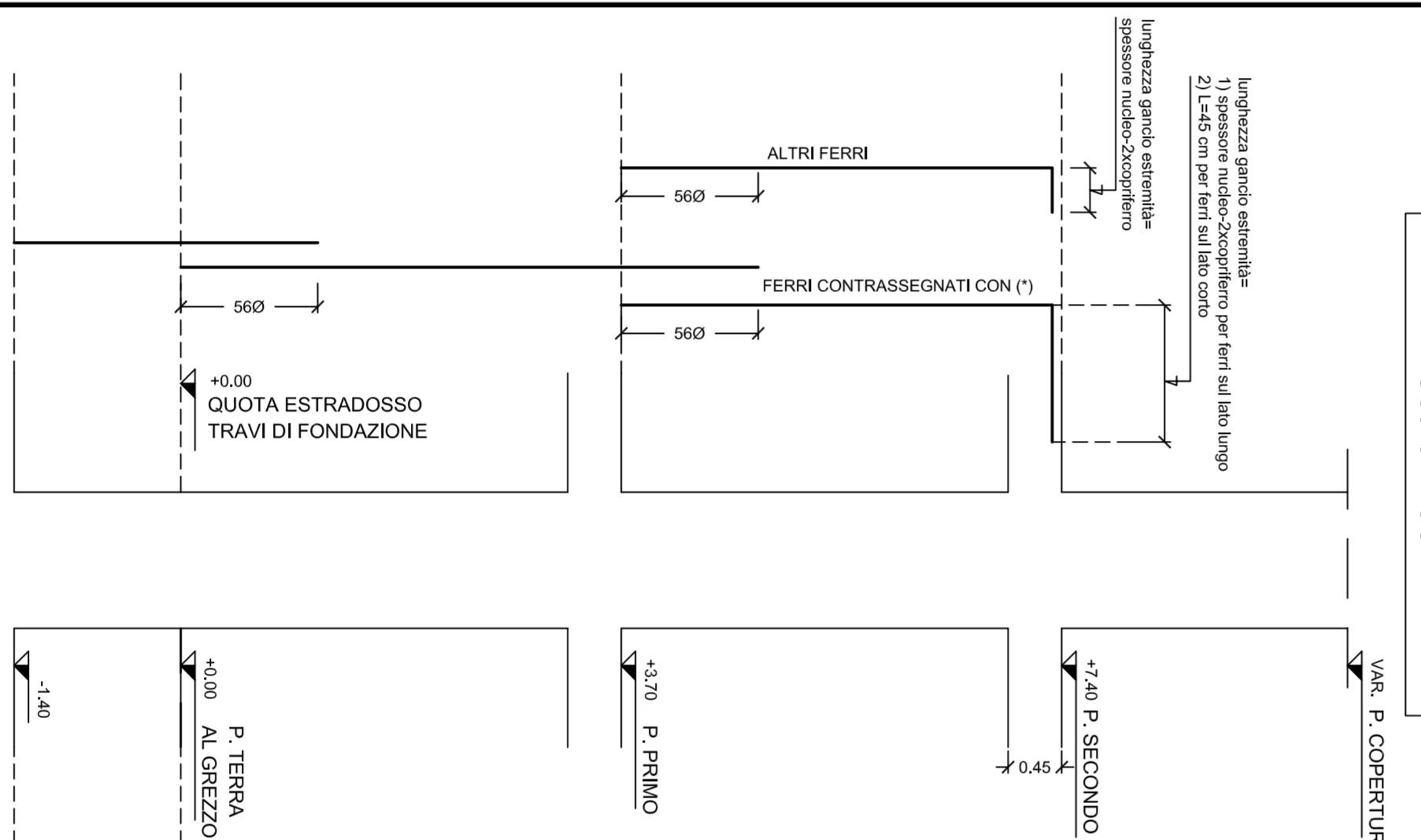
**NUCLEO 5-scala 1:20**



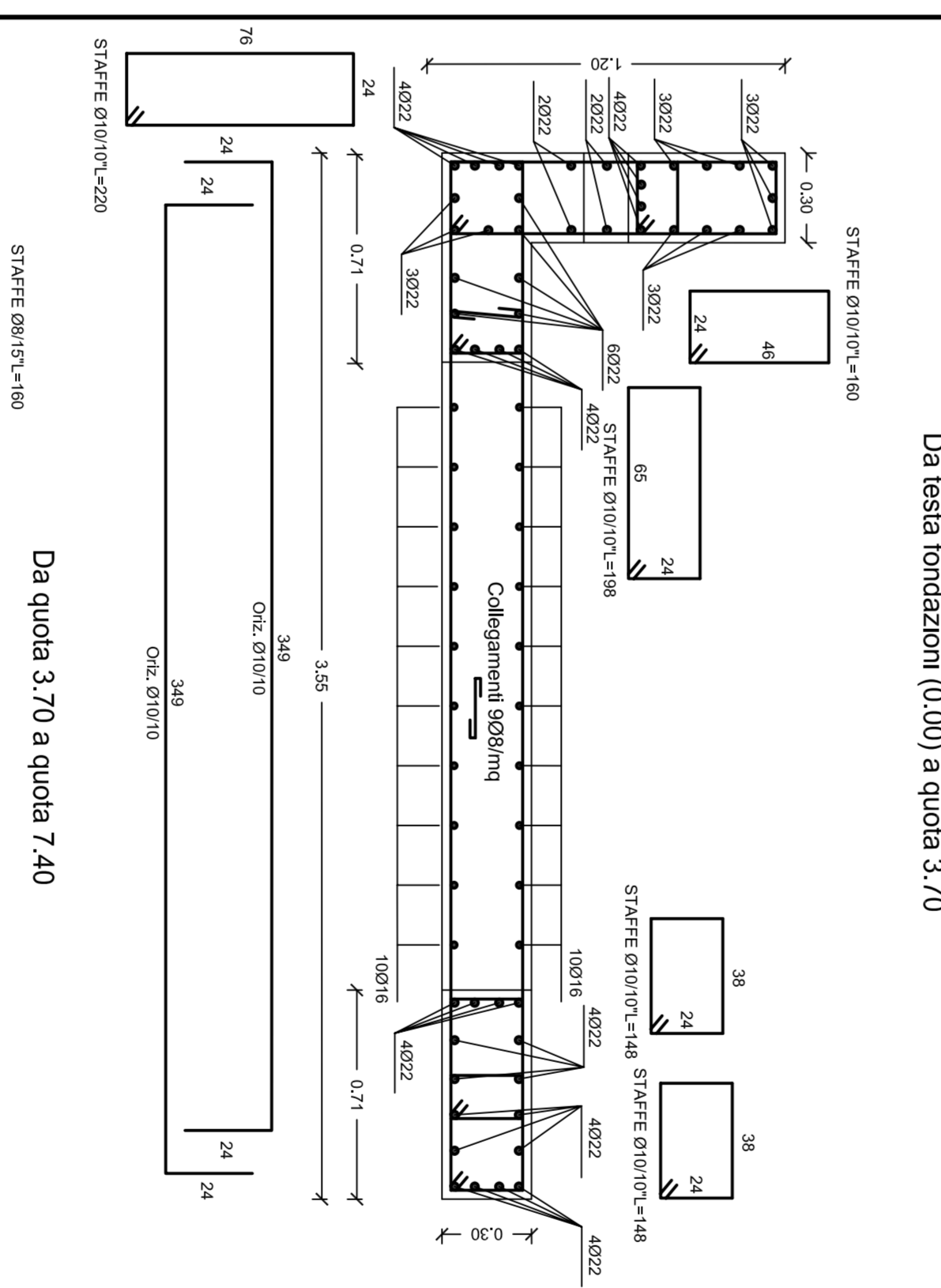
**NUCLEO 8-scala 1:20**



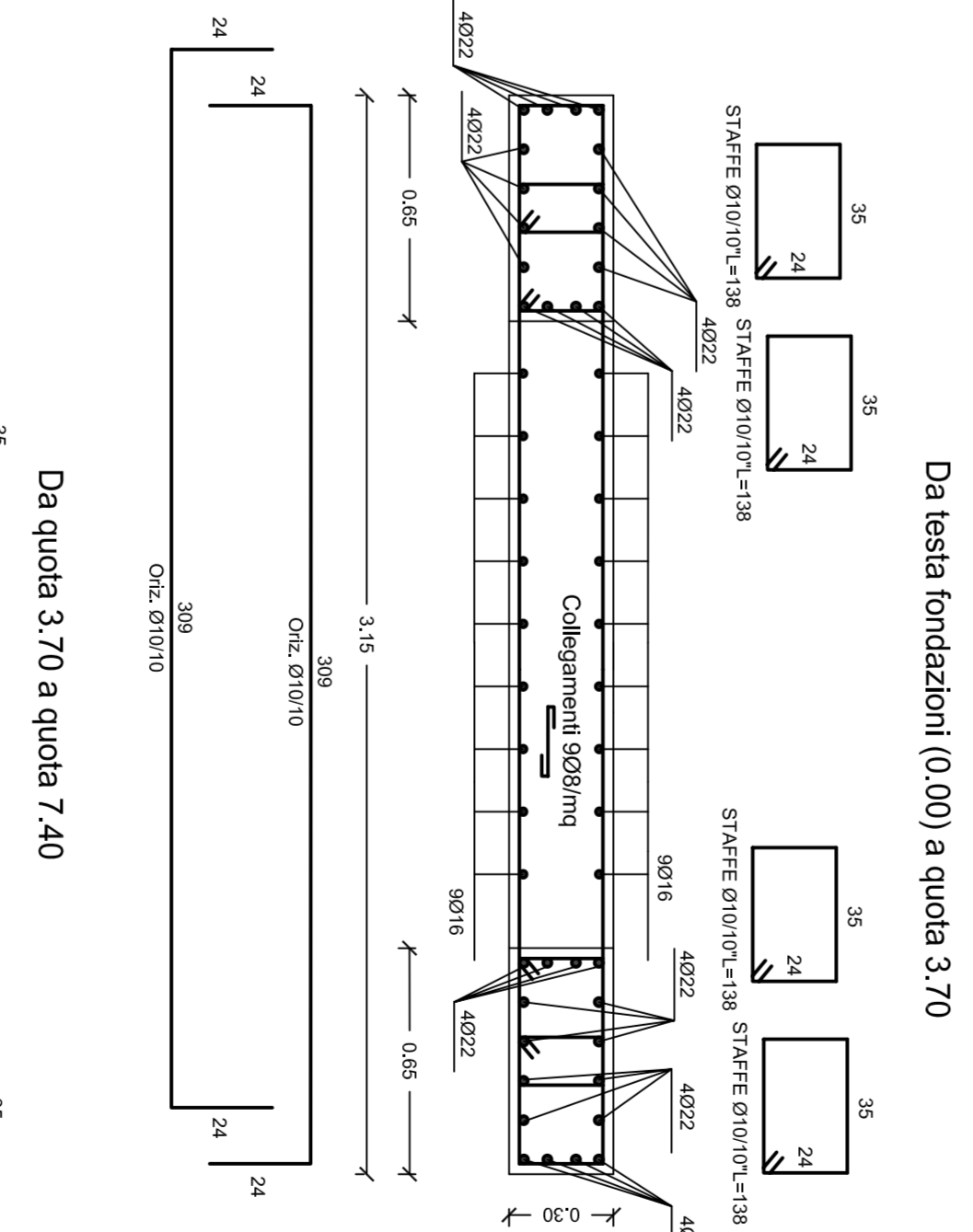
**SCHEMA DI RIFERIMENTO PER FERRI NUCLEI -scala 1:50-**



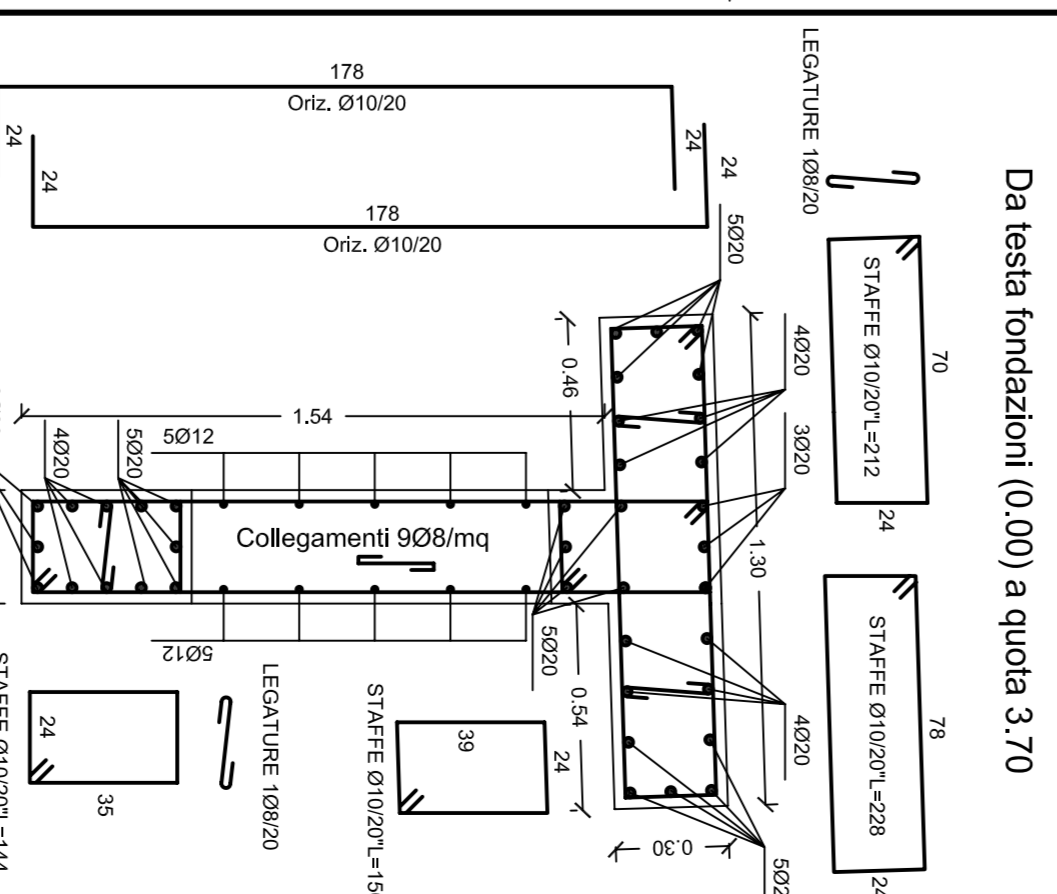
**NUCLEO 7-scala 1:20**



**NUCLEO 8-scala 1:20**



**NUCLEO 9-scala 1:20**



**N.B.: LA QUOTA +0.00 E' SULLA TESTA DELLE TRAVI DI FONDAZIONE (COINCIDENTE CON LA QUOTA DEL SOLAIO DEL PIANO TERRENO AL GREZZO)**